



Orleans Parish Jail Population by the numbers

A monthly report produced by the Mayor's Office of Criminal Justice Coordination

**November
2024**

Purpose

This report aims to address two broad questions: "Who was detained in the Orleans Justice Center last month?" and "What was the flow of people into and out of the jail last month. To that end, the report presents information about average daily jail population, admissions, and releases over the past month.

Data sources

The data behind the graphics comes from the **Orleans Parish Sheriff's Office** and the **Orleans Parish Criminal District Court** via the OCJC Data Warehouse. OCJC undertakes additional data processing to better enable tabulations and analyses.

Summary

- On average, **1,531 people were detained in the jail daily in November 2024.**
 - A 2.1% increase from the average daily jail population of 1,500 people in October 2024.
 - A 25% increase compared to November 2023, when people, on average, 1,225 people were detained in the jail.
- **781 people were admitted to the jail in November**, a 9% decrease compared to October, when 858 people were admitted to the jail. Half – 50.6%, or 395 people – admitted to the jail last month had a new felony as the most serious charge at booking.
- **787 people were released from the jail in November**, a decrease of 7% from October, when 843 people were released from jail custody.
- **The average length of stay for the 787 people released from the jail in November was 55 days** (min = less than 1 day; max = 1,776 days; standard dev. = 159.9).
 - The median length of stay for all people released in November was 3 days, one day longer than October's median.
 - 374 people (47.5% of releasees) left jail custody within 2 days of admission, and 2/3 of released people (66.6%) left jail custody within 13 days of admission.
 - People who were released more than 2 days after admission had an average jail stay of 104 days (n = 413 people; min = 3 days; standard dev. = 208.9) and a median length of stay of 30 days.
- Racial disparities persist in the jail population. In November 2024, **Black people were detained in the jail at 4.5 times the rate of white people**, per 100,000 New Orleans residents by race.
 - The November jail detention rate for Black people was 612 Black detainees per 100,000 Black residents, compared with the detention rate of 135 white detainees per 100,000 white residents.
 - The November jail detention rate for all New Orleanians was 406 detained people per 100,000 residents.

The average monthly jail population in November 2024 was 1,531 people (standard dev. = 20.4), a 2.1% increase from October, when the average jail population was 1,500 people. The average monthly population has increased by 25% compared to November 2023, when, on average, 1,225 people were detained in the jail.

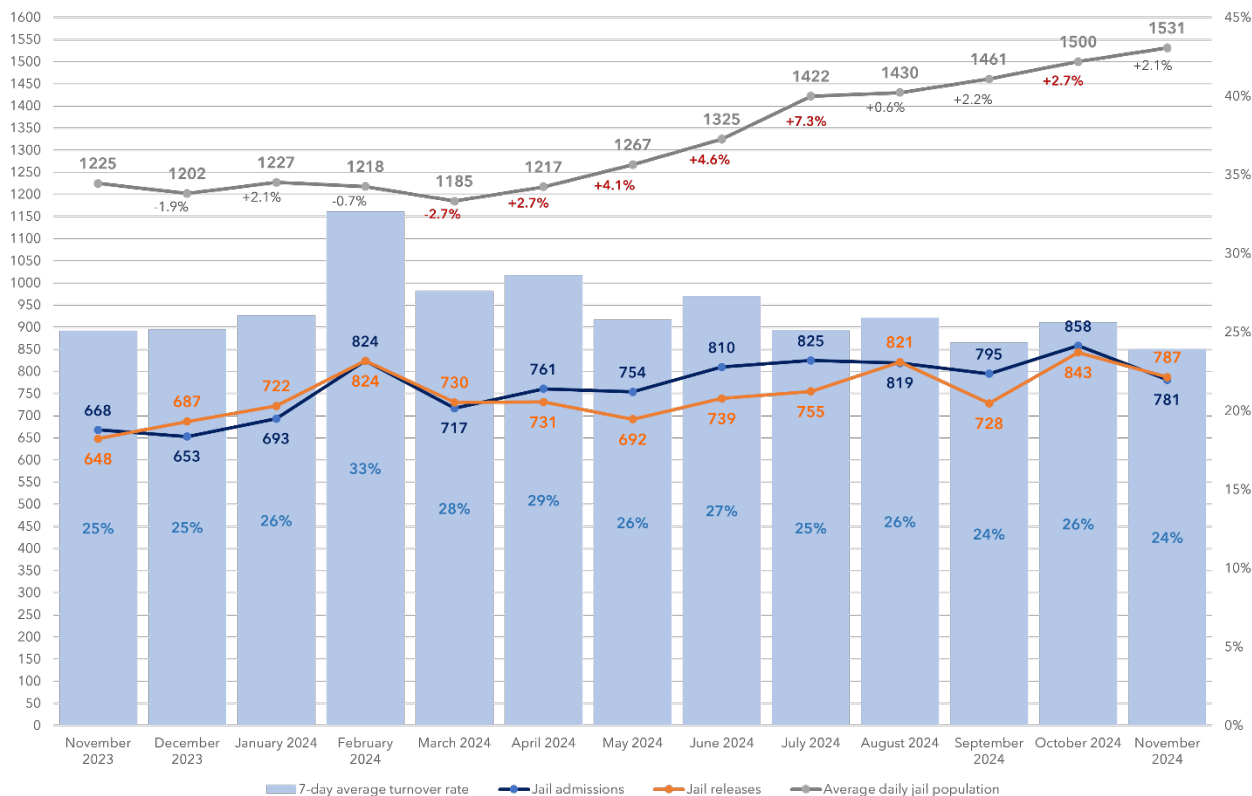


Figure 1. Historical trends in average jail population, month-to-month population changes, monthly admissions, monthly releases, and 7-day average turnover rates, November 2023 – November 2024

The 7-day average jail turnover rate for November 2024 was 24%, 2 percentage points lower than October’s rate. The jail turnover rate is a ratio of jail admissions and releases to the average daily population. On average, nearly 1 out of 4 people detained during a week in November were newly admitted to or about to be released from custody. Bureau of Justice Statistics estimates that in 2022 (the most recent year for which data are available), the national average weekly turnover rate for jails of our size was 31%.

The lowest daily jail population was on November 28th, when 1,492 people were detained in the jail. The daily jail population hit its peak on November 15th, when 1,564 were detained in the jail.

Daily jail admissions varied daily in November (daily average = 26 admissions; standard dev. = 8.3) and reached a peak on November 19th, when 42 people were admitted to the jail. 29 people were admitted to the jail on the last day of the month. In all, 781 people were admitted to the jail in November 2024.

Jail releases fluctuated more widely than jail admissions in November (daily average = 26 releases; standard dev. = 12.2). On November 12th and again on November 25th, 46 people were released from the jail, the largest number of releases during the month. 15 people were released from the jail on the last day of the month. In all, 787 people were released from jail in November 2024.

Most people in jail custody in November – 93%, on average – were detained on open matters. By “open matters”, we’re referring to people whose court cases have not yet reached their final disposition and those who were admitted to the jail with open warrants and/or probation or parole detainers only.

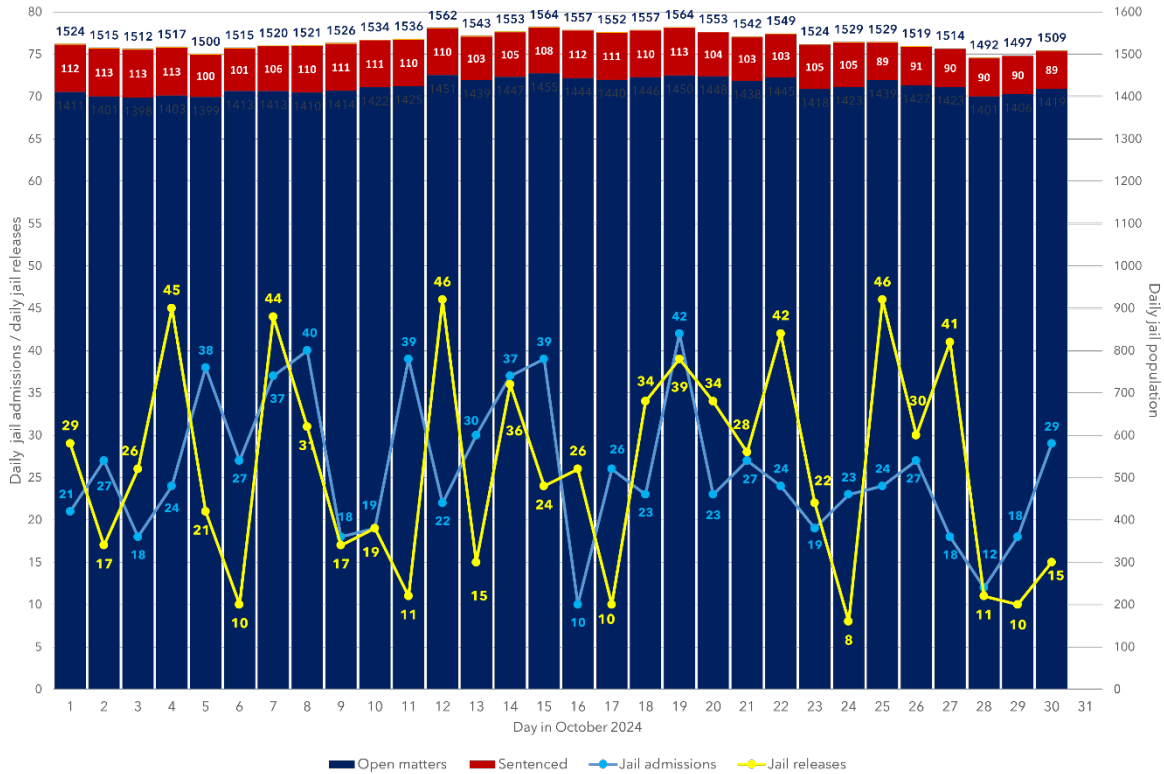


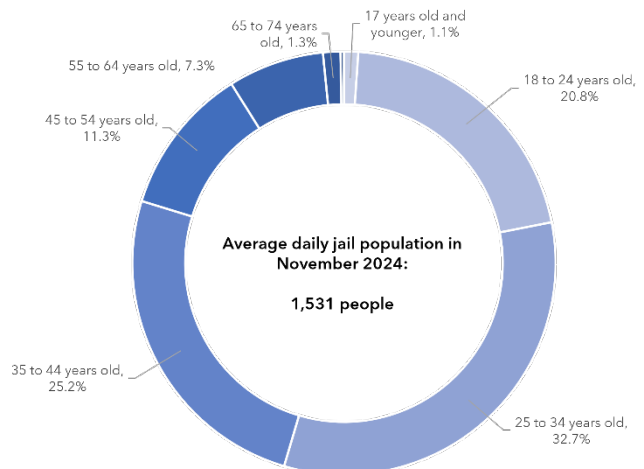
Figure 2. Daily population by legal status; jail admissions; and jail releases, November 2024

7% of the average daily jail population – about 104 people in custody each day in November – comprised detained people with closed matters. By “closed matters”, we mean that at least one case associated with their current jail stay has reached its final disposition. Included in this group are people who have been sentenced to the Department of Corrections or the Eastern Louisiana Mental Health System and are awaiting transport to those facilities.

Nearly 4 out of 5 people (78.7% of the 1,500 people detained, on average, in November) were between the ages of 18 and 44 years old as of the last day of the month.

17 youths under the age of 18 years, on average, were in jail custody last month and made up 1.1% of the average daily jail population in November.

Figure 3. Average daily jail population in November 2024 by age ranges. Note that age is calculated as the difference in years between date of birth and 30 November 2024, rounded down. On average, 0.3% of last week’s jail population comprised people aged 75 years and older.



Focus on racial equity: Overrepresentation and disparity in jail detention

Black people are overrepresented in the jail population

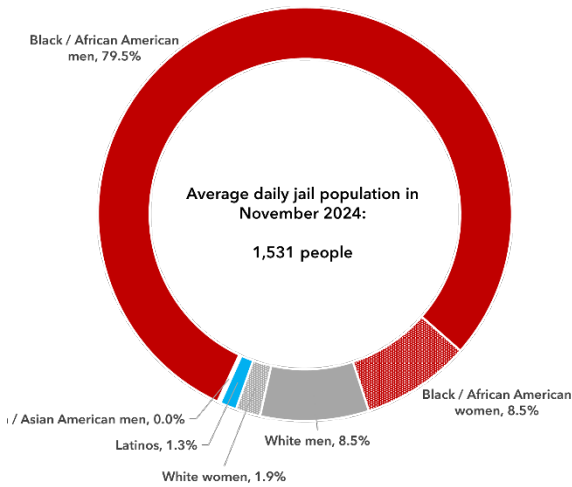


Figure 4. Average daily population by race/ethnicity and sex, November 2024.

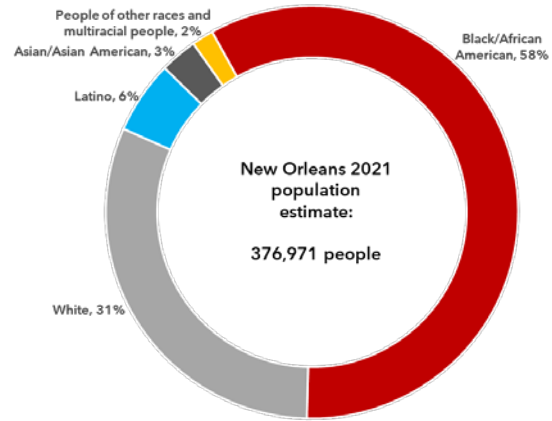


Figure 5. New Orleans population estimate, 2021. Source: Summary Files, 2021 American Community Survey, US Census Bureau.

New Orleans is a majority-Black city, yet African Americans remain overrepresented in the average jail population. In November, Black/African American people comprised 88% of the average daily jail population. In comparison, Black people are 59% of the New Orleans population, based on 2021 Census estimates.

If Black people are disproportionately represented in the average jail population, white people are under-represented in the jail population. In November, white people made up 10% of the average jail population, while making up 31% of the New Orleans population, based on 2021 Census estimates.

For more about how we define *overrepresentation*, please see the Glossary at the end of the report.

'Wide' disparities persist in jail detention rates

Even when we control for the difference in population sizes of Black and white New Orleans residents, we find that, per 100,000 New Orleanians by race, **Black people are detained in the jail at five times the rate of white people (RRI = 4.5)**. For every 100,000 Black/African American New Orleanians, 612 Black people were in detained in November 2024; for every 100,000 white New Orleanians, 135 white people were in jail custody.

More than 4 Black people were detained in the jail...



per 100,000 Black New Orleanians

...For every 1 white person detained in the jail



per 100,000 white New Orleanians

Figure 6. Relative rate index of jail detention rates per 100,000 Orleans Parish residents by Black and white race categories, November 2024. Population estimates are from the 2021 American Community Survey, Summary File 4, US Census Bureau.

781 Jail admissions in November 2024

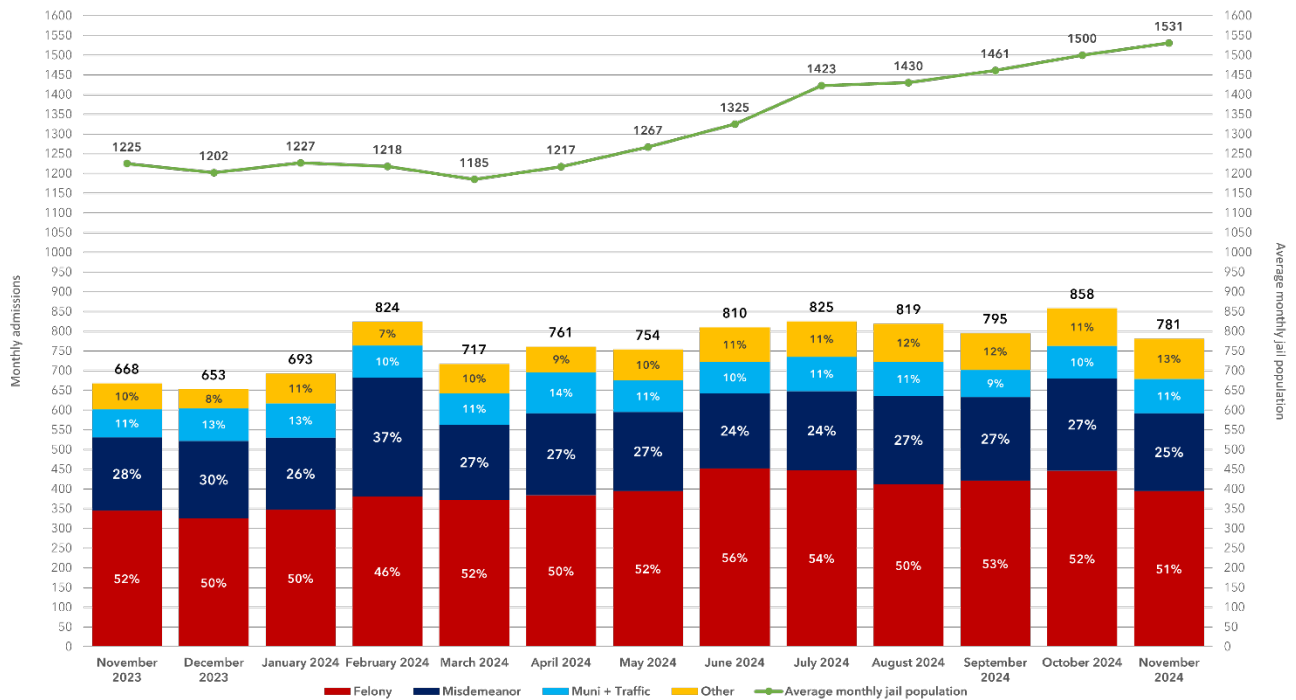


Figure 7. Historical trends in jail admissions by most serious charge category at booking and average monthly jail population, November 2023 - November 2024. Note that “Other” admissions include people booked into the jail for warrants or detainers only; people remanded to jail custody by the Court; and people brought to the jail on writs.

781 were people admitted to the jail in November 2024, a 9% decrease from October, when 858 people were admitted to the jail. Over half – 50.6%, or 395 people – admitted to the jail last month had a new felony as the most serious charge at booking, and 25.2% – 197 people – were admitted to jail with a new state misdemeanor as the most serious charge at booking.

Most people who were admitted to the jail in November – 86%, or 671 out of the 781 jail admissions – had been arrested by NOPD officers.

Louisiana State Police (LSP), which earlier this year expanded their presence in the city beyond patrolling the French Quarter, arrested 4%, or 30 people, who were admitted to the jail in November -- an increase from 12 LSP arrests resulting in jail admissions in October. The proportion of LSP arrests resulting in jail admissions out of all jail admissions increased by 3 percentage points in November, compared to October.

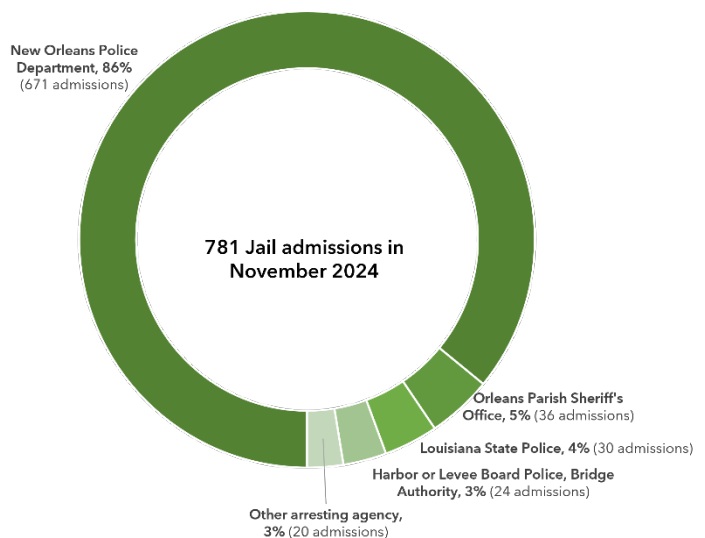


Figure 8. November 2024 jail admissions by arresting officer's agency. Note that “Other arresting agency” November include campus police departments, HANO police, and LA Probation & Parole.

More than 3 out of 4 jail admissions – 75.8%, or 592 people out of the 781 people admitted in November – were for felonies or state misdemeanors.

395 people were admitted to the jail with felony charges (50.6% of all jail admissions in the month), and 197 people were admitted to the jail with state misdemeanor charges (25.2% of all jail admissions).

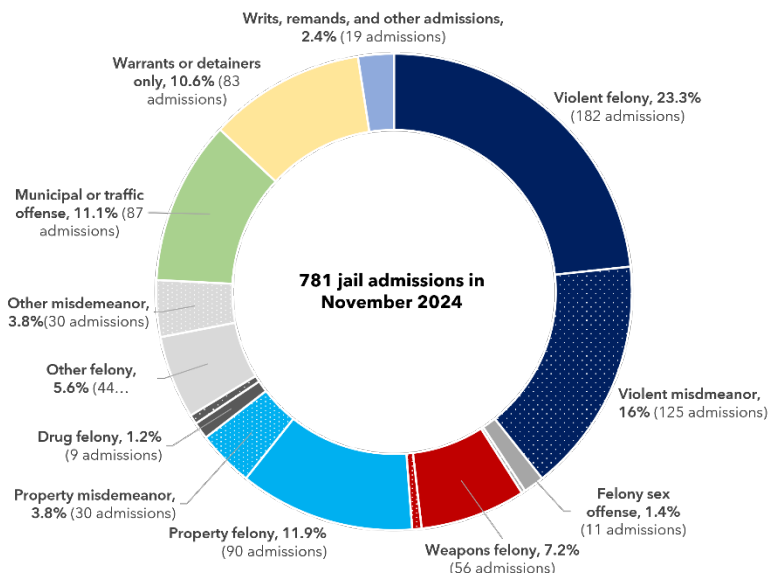


Figure 9. Jail admissions by most serious charge at admission, November 2024. 2 people (0.3%) were admitted with a misdemeanor sex offense; 5 people (0.6%), with a weapons misdemeanor; and 5 people (0.6%), with a drug misdemeanor as the most serious charge at admission in November 2024.

People admitted to the jail with violent felonies and misdemeanors made up the majority – 48% – of felony and state misdemeanor jail admissions in November 2024.

Jail admissions on violent charges decreased in November numerically by 6%, from 195 admissions in October to 182 in November, while also decreasing as a proportion of felony and state misdemeanor admissions by 4 percentage points. "Other" felony and state misdemeanor charges also decreased by 25%, from 40 admissions in October to 30 in November.

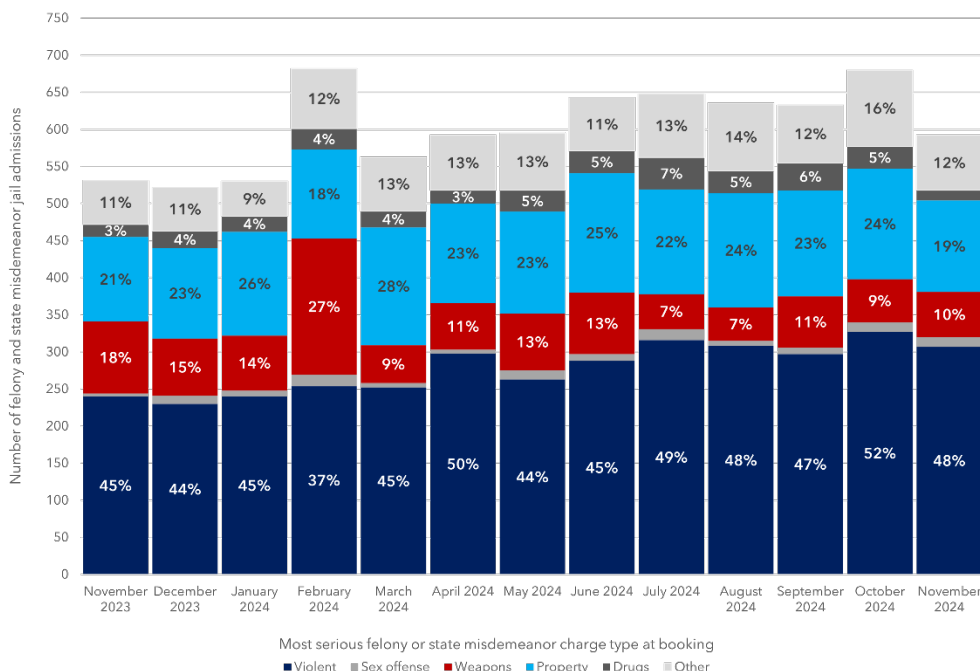


Figure 10. Historical trends in jail admissions for felonies and state misdemeanors by most serious charge type at admission, November 2023 – November 2024.

Focus on racial equity: Disparities in jail admission

Disparities by race in jail admissions persisted in November 2024. **Black people were admitted to the jail at nearly three times the rate of white people for every 100,000 New Orleans by race** (RRI = 2.8).

Overall, New Orleans admitted 207 people into the jail for every 100,000 parish residents in November 2024. When we compare jail admission rates by race, we find that, in November, 290 Black people were booked into the jail for every 100,000 Black New Orleanians, and 104 white people were admitted to the jail for every 100,000 white New Orleanians.

For nearly every 3 Black people admitted to the jail...



per 100,000 Black New Orleanians

...One white person was admitted to the jail



per 100,000 white New Orleanians

Figure 11. Relative rate index, jail admission rate per 100,000 New Orleans residents by race, November 2024. Population estimates are from the 2021 American Community Survey, Summary File 4, US Census Bureau.

The persistent disparity in rates of jail admission for Black people booked into the jail on with weapon charges rose in November. Black people were admitted to the jail with weapons charges as the most serious offense at admission at 5.5 times the rate of white people admitted to the jail with weapons charges as the most serious offense at admission. The rate of admissions on weapons charges as the most serious offense at booking was 9.1 per 100 African Americans admitted to the jail, compared to 1.6 white people per 100 white people admitted to the jail.

In November 2024, 58 Black people and 2 white people were admitted to the jail with weapons charges as the most serious offense at initial booking in November.

For more than every 5 Black people admitted to the jail with a weapons charge as the most serious offense..



per 100 Black people admitted to the jail

One white person is admitted to the jail with a weapons charge as the most serious offense.



per 100 white people admitted to the jail

Figure 12. Relative rate index, jail admissions for which weapons charges were the most serious charge at booking per 100 jail admissions by race, November 2024

Using the relative rate index measure (RRI), where "1" represents racial parity, we observed disparities by race per 100 jail admissions across nearly all most-serious-charge-at-booking categories. For example, Black people are admitted to the jail with a drug offense as the most serious charge at booking at 2.1 times the rate of white people, and at 1.2 times the rate of white people when violent offenses were the most serious charges at admission.

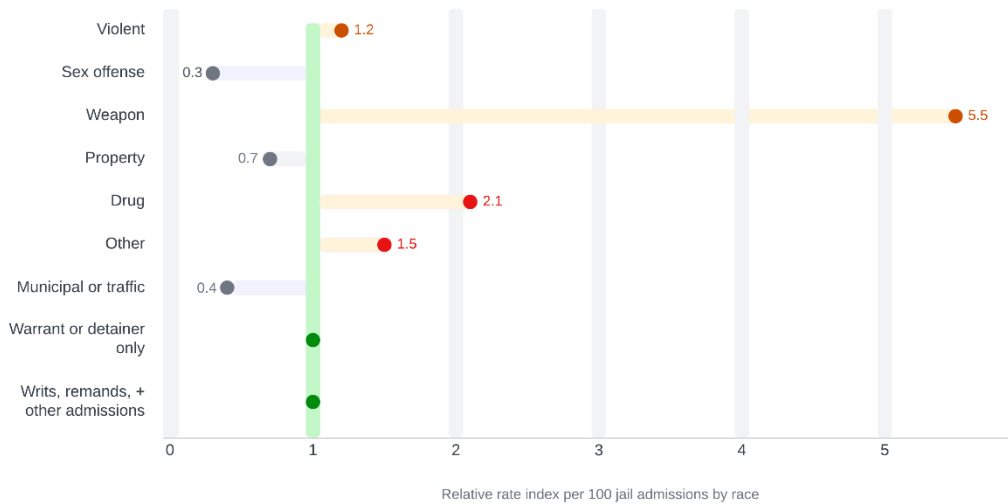


Figure 13. Relative rate indexes for most-serious-charge-at-admission categories per 100 jail admissions by race for Black and white people admitted to the jail, November 2024.

787 Jail releases and an average length of stay of 55 days in November 2024

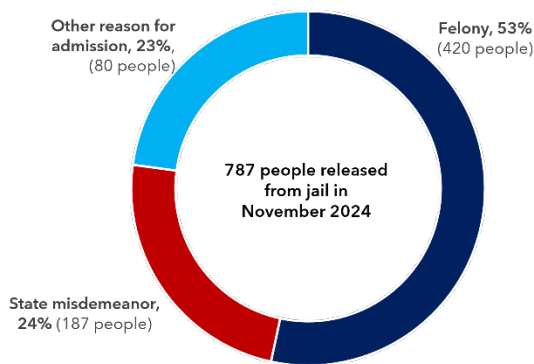


Figure 14. Jail releases by most serious charge type at admission, November 2024

The median length of stay for the 787 people released from jail in November was 3 days, one day longer than October’s median (average = 54.9 days; min = less than one day; max = 1,776 days; standard dev. = 159.9).

47.5% of people released in November stayed in jail for 2 days or fewer. The 413 people who stayed in jail for 3 or more days – 52.5% of those who were released last month – had an average length of stay of 104 days and a median length of stay of 30 days (standard dev. = 208.9).

53.4% – 420 of the 787 people released from jail – had been admitted to the jail with at least one felony offense at admission and had an average length of stay of 94 days (median = 13 days; min = less than 1 day; standard dev. = 209.4).

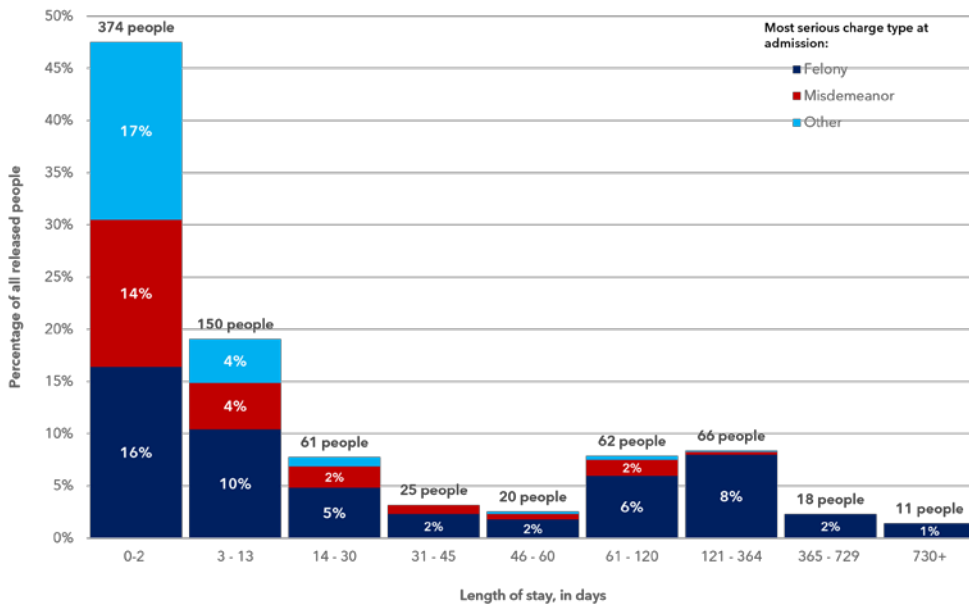


Figure 15. Jail releases by length of stay, in days, and most serious charge type at admission, November 2024, N = 787

187 people (23.8% of all people released in November) had at least one state misdemeanor as the most serious charge at admission and stayed in jail, on average, for 14 days (median = 2 day; min = less than 1 day; max = 224 days; standard dev. = 30.5).

22.9% of those who were released in November (180 people) had been admitted to the jail for warrants or detainers only; municipal or traffic offenses; on writs; or were remanded to the jail by the Court. On average, this group of released people stayed in jail an average of 6 days (median = less than 1 day; max = 299 days; standard dev. = 26.5).

Focus on racial equity: Disparity in lengths of stay

In November 2024, the 659 African American people who were released from the jail spent an average of 61 days in jail – 39 days longer than the average length of stay of 22 days for the 128 white, Latino, and Asian/Asian American people and people of “other” and “unknown” race released from jail last month.

Compared to October 2024, the average length of stay for Black people who were released from jail has increased by 3 days, and the length of stay for white releasees decreased by 8 days. The disparity between lengths of stay for Black releasees and white, Latino, and Asian/Asian American released people increased by 12 days in November compared to October.

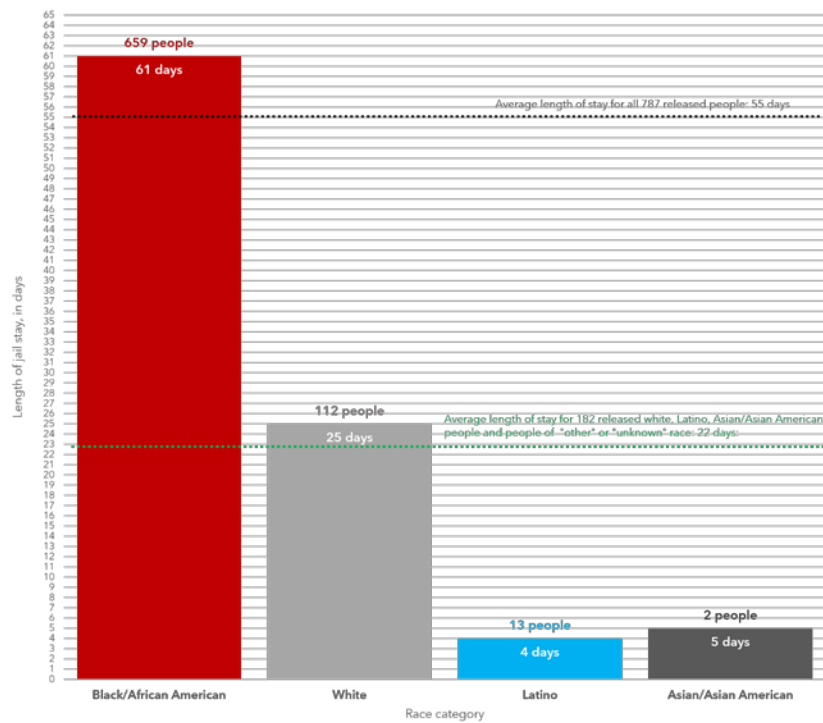


Figure 16. Average length of jail stays by race, November 2024, N = 787 released detainees. Note that 1 person with “unknown” race were released from jail last month; this person’s length of jail is excluded from the graphic but included in the average length of stay calculation for non-Black released people.

Glossary of terms and technical notes

Criminal legal system definitions

Average monthly jail population. The sum of all the daily detainee counts divided by the number of days in the month. We use an average, rather than a snapshot (the jail population on a single day of the month which represents the jail population for the month) so that we can report one figure that takes into consideration the fluctuations in jail population during the month.

Jail admissions. We acknowledge that the term, *jail admission*, may be defined differently in correctional, pretrial, and other spaces. Here, we define jail admissions as the transfer of custody from an arresting agency to the Orleans Parish Sheriff's Office following custodial arrests that occurred outside of the jail. Certainly, people can be and are booked on new charges after admission to the jail (for example, for offenses that can only take place within a jail, such as battery of a correctional officer), our tabulations and analyses only consider bookings that brought a person from the community into the jail, consistent with the central aims of the report.

Jail releases. A person's exit from jail custody. Note that 'releases' can refer to releases back into the community (for example, when someone is released on their own recognizance or posts bond); release to another jurisdiction's law enforcement agency (for example, in the case of someone admitted to the jail on an out-of-state warrant); or release to the Department of Corrections after sentencing.

Length of jail stay. The difference, in days, between the date of jail admission and the date of jail release. Note that the length of stay is only calculated for people who have been released from jail to ensure a final, static figure.

Average length of stay. The mean of all jail stays for people released during the month, calculated as the sum of all lengths of stay divided by the number of people released.

Most serious charge at booking. We use a hierarchy of charge categories to determine the most serious charge at booking. In the hierarchy, all charges are categorized into four types: 1) felonies; 2) state misdemeanors; 3) municipal and traffic offenses; 4) warrants, attachments, and Louisiana parole and probation detainers. All felonies are more serious than state misdemeanors, and within the felony and state misdemeanor categories is a sub-hierarchy of offense types, listed here in order of seriousness: a) violent offenses; b) sex offenses; c) weapons offenses; d) property offenses; e) drug offenses; and f) 'other' offenses.

Average 7-day jail turnover rate: A measure "borrowed" from the Bureau of Justice Statistics, the average 7-day jail turnover rate aims to capture in broad terms the movement of people into and out of the jail. We calculate the jail turnover rate by dividing the average daily population for the month by the sum of jail admissions and jail releases, multiplying by 7, and dividing by the number of days in the month.

How we operationalize measures of inequality

Disproportionality and over- and underrepresentation. We use these terms to compare the demographic characteristics of a group (like people detained in the jail) to the demographic characteristics of the larger community from which most on that group came (like Orleans Parish). When both groups share similar proportions of people by demographic characteristics, we observe **proportionality**. We observe **disproportionality** when one demographic group -- for example, Black people or white people detained in the jail--is **overrepresented** (in the case of Black people in the jail) or is **underrepresented**, in comparison with the demographic characteristics of Orleans Parish.

Glossary: How we operationalize measures of inequality, continued

Disparity. We use the term, *disparity*, to refer to differences in the rates at which something occurs among 2 or more groups. To explore the possibility of disparity in our jail population reports, we first calculate the **rate of jail detention per 100,000** New Orleans residents by race/ethnicity. The jail detention rate is the average jail population for a group (say, Black people detained in the jail during the month) divided by the estimated number of Black people in New Orleans, then multiplied by 100,000. Generating a rate per 100,000 is useful when comparing rates between groups of differing sizes (for example, the population of New Orleans, a majority [58%] African American city), we can “control” for the differences in size by comparing rates per 100,000 residents.

Further, we can “relate” the jail detention rate for Black people with that of white people to generate a **relative rate index (RRI)**. To do this, we divide the Black jail detention rate per 100,000 Black people in New Orleans by the jail detention rate for white people per 100,000 residents. By using the white rate as the denominator in the calculation, we effectively index the white rate to 1 and defensibly make the statement that, in November 2023 (for example), Black people were jailed at a rate 4.8 times that of white people. We observe parity – a measure of equality – when the RRI = 1.

Notes about race / ethnicity categories

Our reporting on racial and ethnic demographics of people detained in the jail is based on data collected by Orleans Parish Sheriff’s Office (OPSO) deputies during the jail admission process. OPSO uses the following mutually exclusive categories for race: Black; White; Hispanic; Asian; American Indian; and Unknown. The race and ethnicity categories currently in use by OPSO do not quite align with those used by the US Census Bureau, which defines race and ethnicity as separate constructs.

Our reporting is rooted in an understanding that the inequalities that we observe are reflections and symptoms of systemically racist systems. We view mass incarceration in the US as the cumulative effects of systemic racism that impact everyone’s lives before any one person is ever booked into jail. Accordingly, our reporting about racial disproportionalities should not be interpreted as critiques of Black people or Black culture; nor should it be interpreted as evidence to support detention of more white people to reduce inequalities.

One thing to keep in mind: we use these measures and categories as a kind of shorthand to describe inequalities, but they certainly don’t tell the whole story. Race – like other categories like gender -- is a broad social construct that is shaped by history and contains other constructs, like socio-economic status and access to essentials such as education and health care. Accordingly, the purpose of the sections is to highlight some observed areas of inequality, in the hope that it sparks continued conversation about how to make our community more just and equitable.

We welcome your feedback and questions!

As a stakeholder, have you noticed something and wondered if data exists to confirm your observations? At OCJC, we are interested in your observations and data questions. Please reach out to Adrienne Tobler at adrienne.tobler@nola.gov to further discuss the possibility of exploring your questions.

For technical questions, please contact Theresa McKinney at theresa.mckinney@nola.gov.