

SUN BUCKS

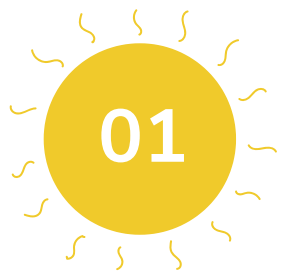


EBT

Informational Session for
Implementing Agencies & Community Partners



Table of CONTENT



What is SUN Bucks?



Why was it created?



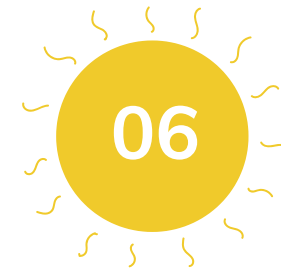
How does it work?



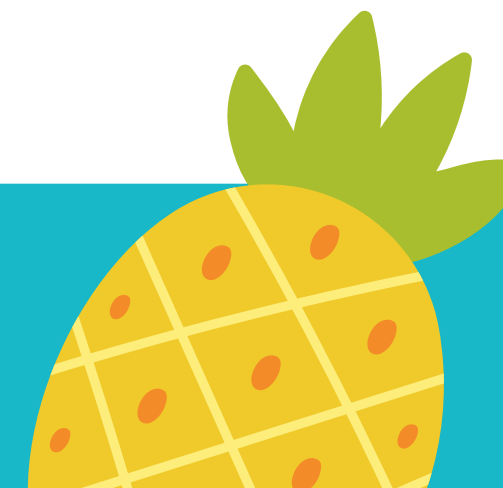
Who is eligible?



FAQs



More information





What is SUNBUCKS

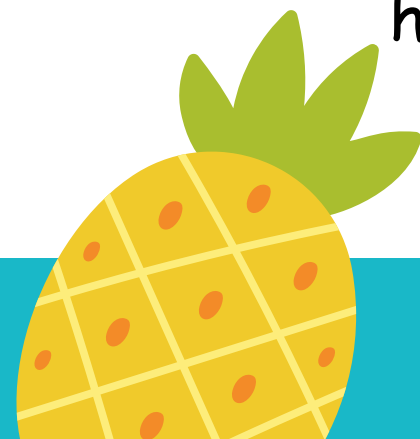
SUN Bucks, also known as Summer EBT, provides grocery-buying benefits to low-income families with school-aged children when schools are closed for the summer.

Each eligible child will receive a single payment of \$120 for the summer, with benefits being issued in multiple phases beginning in June. Most eligible families will get SUN Bucks automatically, but some parents will need to apply.



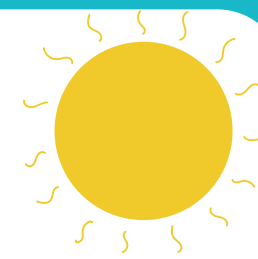
Why was it **CREATED**

The United States serves nearly 30 million students who participate in the US Department of Agriculture's (USDA's) school breakfast and lunch programs during the school year. However, many of the same students who lose access to these healthy meals during the summer months are at higher risk of food and nutrition insecurity. In December 2022, a bipartisan Congress created a new, permanent program to provide low-income families with students additional food access over the summer months. This program will help close the summer hunger gap when students have less access to nutritious school meals.



How does it
WORK?

How does SUN Bucks work?



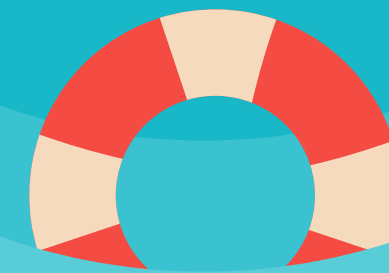
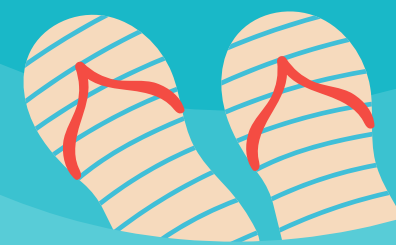
Beginning in summer 2024, families will receive \$120 per eligible student. SUN Bucks benefits are loaded onto a debit-like card (EBT card) that families can use to buy groceries at most grocery stores, farmer's markets, and other authorized retailers. SUN Bucks cannot be used for hot foods, pet foods, cleaning or household supplies, personal hygiene items, or medicine. SUN Bucks benefits work together with other nutrition assistance programs, such as summer meal sites and the Supplemental Nutrition Assistance Program (SNAP) to provide access to nutritious meals when school is out.





How is this different from **PANDEMIC EBT (P-EBT)**

- P-EBT was an emergency benefit for eligible households based on COVID-related absences.
- P-EBT was issued throughout the school year and during one summer period.
- Children attending schools that operated the Community Eligibility Provision (CEP) were automatically eligible for P-EBT.





SUN BUCKS & CEP SCHOOLS

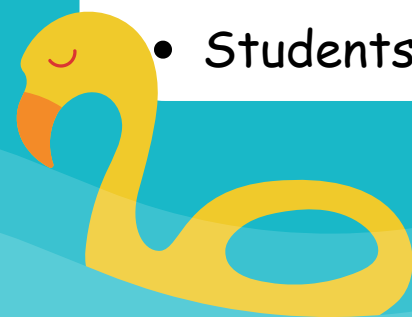
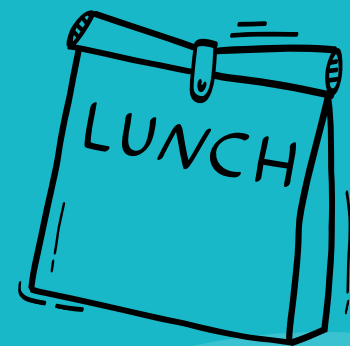
What is CEP?

The Community Eligibility Provision (CEP) is a non-pricing meal service option for schools and school districts in low-income areas. CEP allows the nation's highest poverty schools and districts to serve breakfast and lunch at no cost to all enrolled students without collecting household applications. Instead, schools that adopt CEP are reimbursed using a formula based on the percentage of students categorically eligible for free meals based on their participation in other specific means-tested programs, such as the Supplemental Nutrition Assistance Program (SNAP) and Temporary Assistance for Needy Families (TANF) or Kinship Care Subsidy Program (KCSP).

Who qualifies for SUN Bucks?

Direct certified students

- Students who applied and were individually approved to receive free or reduced-price school meals through NSLP or SBP might have submitted a free and reduced application with the school
- Students approved through the SUN Bucks application





SUN Bucks & NON-CEP SCHOOLS

What is a Non-CEP School?

Schools that process direct certification and applications to determine free or reduced eligibility and then claim those meals at the proper rates - free, reduced, and paid.

Who qualifies for SUN Bucks?

- Students approved for free or reduced meals at any point during the school year.
Unless the household opted out of benefits or benefits were removed due to verification.
- Students approved through the SUN Bucks application during the summer.





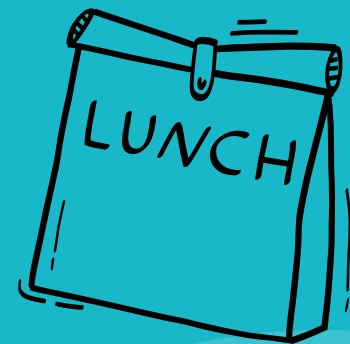
Sun Bucks & NON-NSLP SCHOOLS

What is a Non-NSLP School?

Schools that do not operate the National School Lunch Program.

Who qualifies for Sun Bucks?

- Only school age children who are already receiving SNAP, TANF, KCSP and certain levels of Medicaid benefits or are foster children.



Who is ELIGIBLE?

Eligible children in the following categories will receive SUN Bucks automatically, without need for an application, beginning in June:

- Children whose families received Supplemental Nutrition Assistance Program (SNAP) or Temporary Assistance for Needy Families (TANF) benefits during the 2023-24 school year
- Children receiving Medicaid
- Children who applied and were individually approved to receive free or reduced-price school meals through the National School Lunch Program (NSLP)

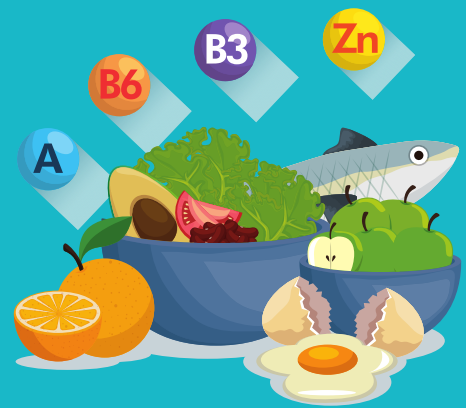
Additionally, children in the following categories may be eligible to receive SUN Bucks but will need to apply

- Children experiencing homelessness
- Migrant children
- Children who receive free or reduced-price school meals but did not complete an NSLP application (for example, if the child attends a Community Eligibility Provision school where all students are provided free or reduced-price meals without applying)

SUMMER

How will Benefits be ISSUED

Benefits will be rolled out in three phases



Beginning JUNE 2024

Children who received SNAP during the 2023-24 school year. Benefits for these children will be added to their household's existing Electronic Benefits Transfer (EBT) card



Other Eligible Children

Other eligible children who do not have an existing EBT card will be issued one when their benefits are issued.

SUMMER





What If I Need to Apply?

For children who are not streamlined eligible and need to apply, information about the application process will be provided soon on the new [Louisiana SUN Bucks website](#).

How Long Do SUN Bucks Last?

Under federal regulations, SUN Bucks must be used within 122 days from the date the benefits are issued, or they will be removed from the card. Once the benefits expire, they cannot be added back on the card.



What Should Families Do Now to Be Ready?

SUN Bucks will be issued to EBT cards and mailed to the address on file for each eligible child. Therefore, it is important that families ensure their mailing address is up-to-date on their SNAP, TANF and/or Medicaid case, and with their child's school.



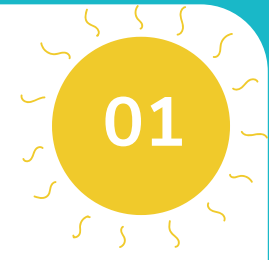
To stay up-to-date on the latest news about SUN Bucks in Louisiana, visit sunbucks.la.gov.



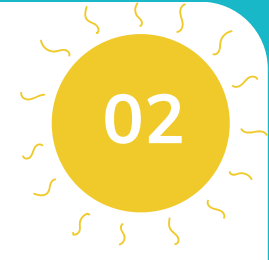
Summer Bucks Toolkit



One Page Flyer
w/Application QR code



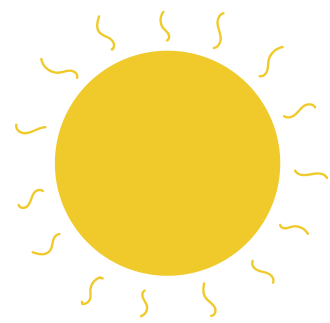
Suggested Social Media /
Newsletter talking Points
w/graphics



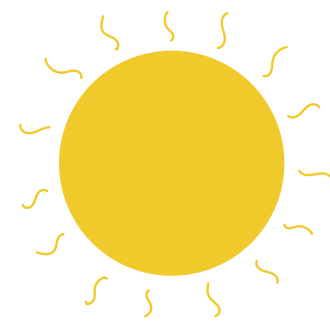
FAQ for Parents
&
USDA Fact Sheets



Program PROMOTION

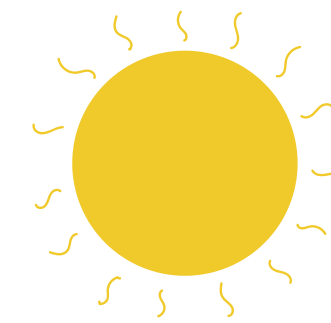


Review the SUN Bucks Toolkit and Website often, to stay informed on SUN Bucks



Promote the program

- Social Media
- Websites
- Directly with households



Help explain who qualifies and where to go with questions



frequently asked QUESTIONS



Do you have to be a US citizen to receive SUN Bucks?

No. You do not need to be a US citizen. Receiving SUN Bucks does not affect your student or your family's immigration status.

Will receiving SUN Bucks affect my ability to receive other government benefits?

No, receiving SUN Bucks will not affect your ability to receive other government benefits.

What is the difference between SNAP and SUN Bucks?

SNAP and SUN Bucks are different programs with different eligibility requirements. It is possible for a student to be eligible for SUN Bucks and not eligible for SNAP. SUN Bucks can be used at retailers that accept SNAP.



More FAQ'S



SUN Bucks FAQ's...cont

Who will receive SUN Bucks benefits?

Louisiana received federal approval to issue SUN Bucks benefits to families already receiving SNAP benefits with eligible school-aged children ages 5-18 in the household.

Where should I apply?

You don't need to do anything to receive these benefits for your child. DCFS will automatically issue SUN Bucks benefits to SNAP households with eligible children

Why am I receiving SUN Bucks?

Children ages 5-18 whose birthdate falls between August 15, 2005, and July 1, 2018, are eligible to receive SUN Bucks benefits for the summer 2024, provided they were in a household that had an active SNAP case in any month from July 1, 2023, through August 15, 2024.

Questions?

