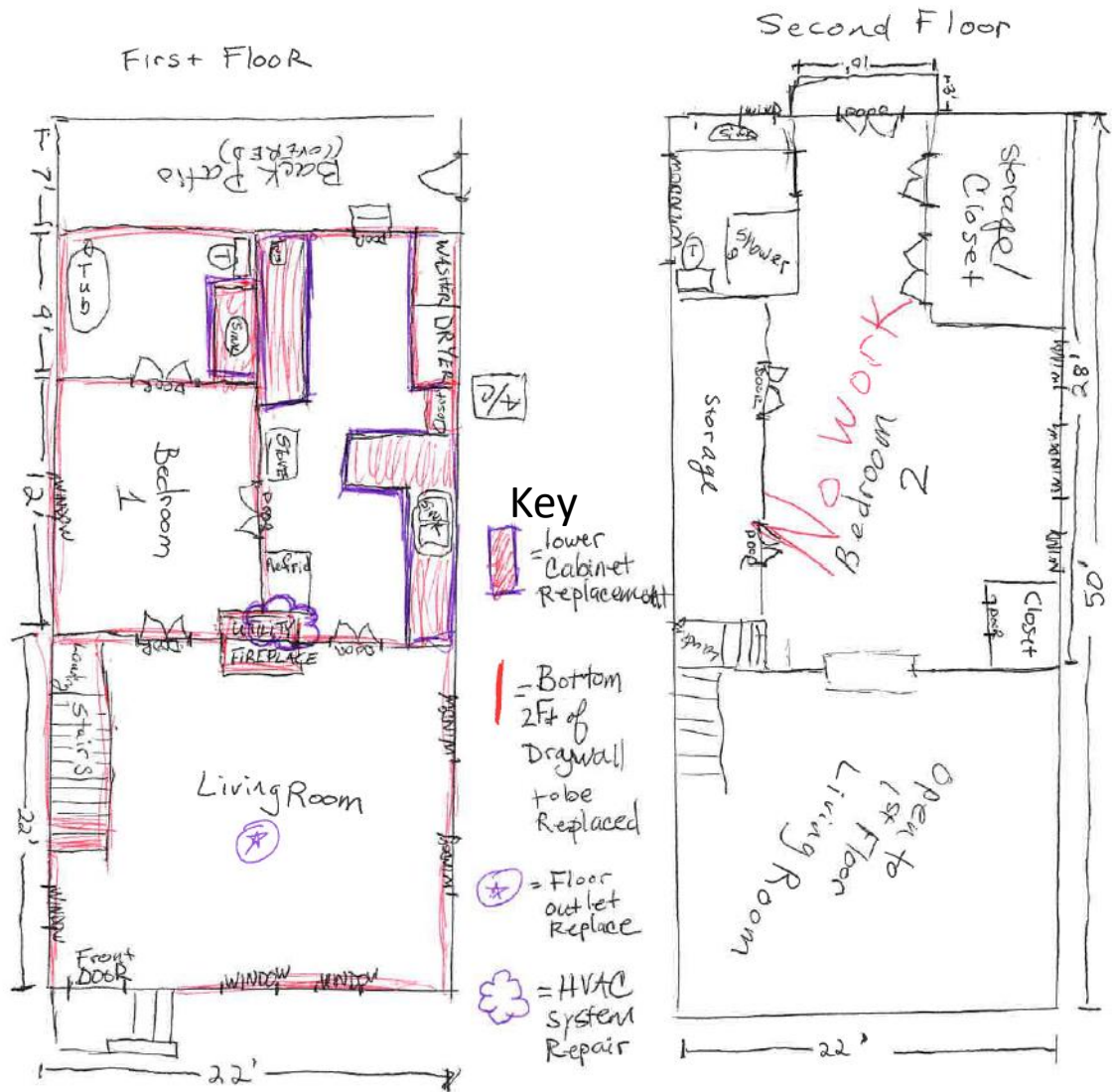


Sample Residential Sketch

For non-structural work, professional architectural drawings are not usually required.

You can hand draw the floor plan yourself, like in the example to the right.

Please try to show **dimensions** as accurately as possible, and use colored lines or lines of different thickness to **show areas where the work will be taking place**. It often helps to include a key like the one between the two levels to indicate different types of work being performed.



Sample Commercial Sketch

For non-structural work, professional architectural drawings are not usually required.

You can hand draw the floor plan yourself, like in the example to the right.

Please try to show **dimensions** as accurately as possible, and use colored lines or lines of different thickness to **show areas where the work will be taking place**. It often helps to include a key like the one between the two levels to indicate different types of work being performed.

