

Gentilly Resilience District Project at Dwyer Canal

Community Design Update 2

April 9th, 2024



Dwyer
Canal

GENTILLY
Resilience
DISTRICT



GENTILLY
Resilience
DISTRICT



WELCOME

Thank you so much for joining us!

We will hold all questions and go through them during the Q&A period following the presentation. There will be an opportunity to ask questions at the end!



Tonight's Speakers

Wilneicha Videau

Resilience Outreach Specialist,
Roadwork NOLA

Rodgerika Medrano

Senior Project Manager,
Stormwater & Green
Infrastructure

Chris Africh

Landscape Architect,
Dana Brown & Associates

Program Overview

The Gentilly Resilience District is a combination of efforts across Gentilly to reduce flooding, slow land subsidence, improve energy reliability, and encourage neighborhood revitalization.

Project Context

The Dwyer Canal Public Space Improvements plan builds upon the work completed under the Pontilly Stormwater Hazard Mitigation Grant Program (HMPG) Project completed back in 2021. This project uses an existing canal to provide locally accessible recreational and education opportunities.

Project Area

The project area is located between France Road and the Norfolk Railroad. The north/south extents are the residential homes along Mithra St. and Dreux Ave.



Project Goals

New Orleans' goal is to work to connect physical resilience with social resilience by providing spaces for recreation, increasing environmental awareness, improving quality of life, and promoting environmental justice.



Ecosystem diversity



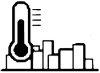
Interpretive signage



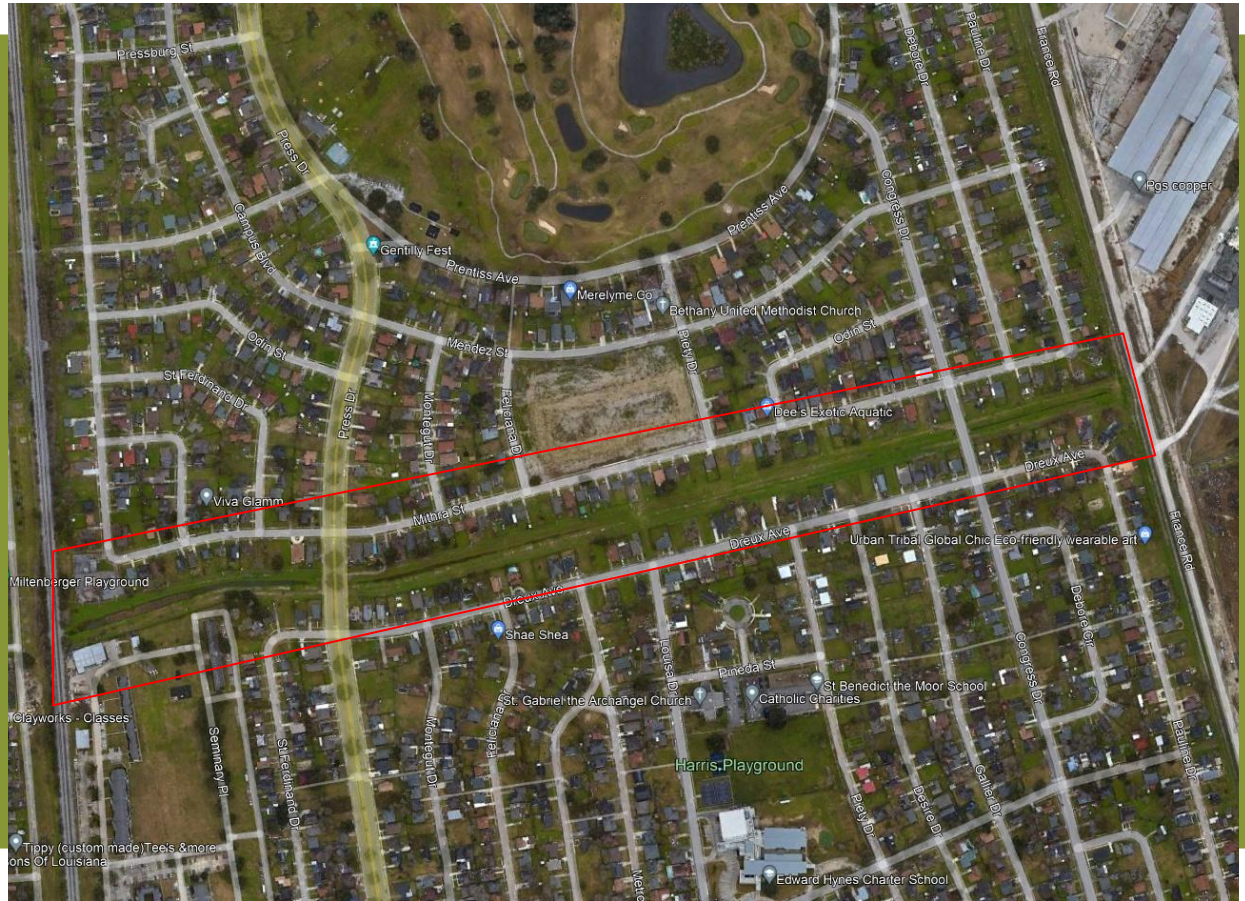
Nature walks



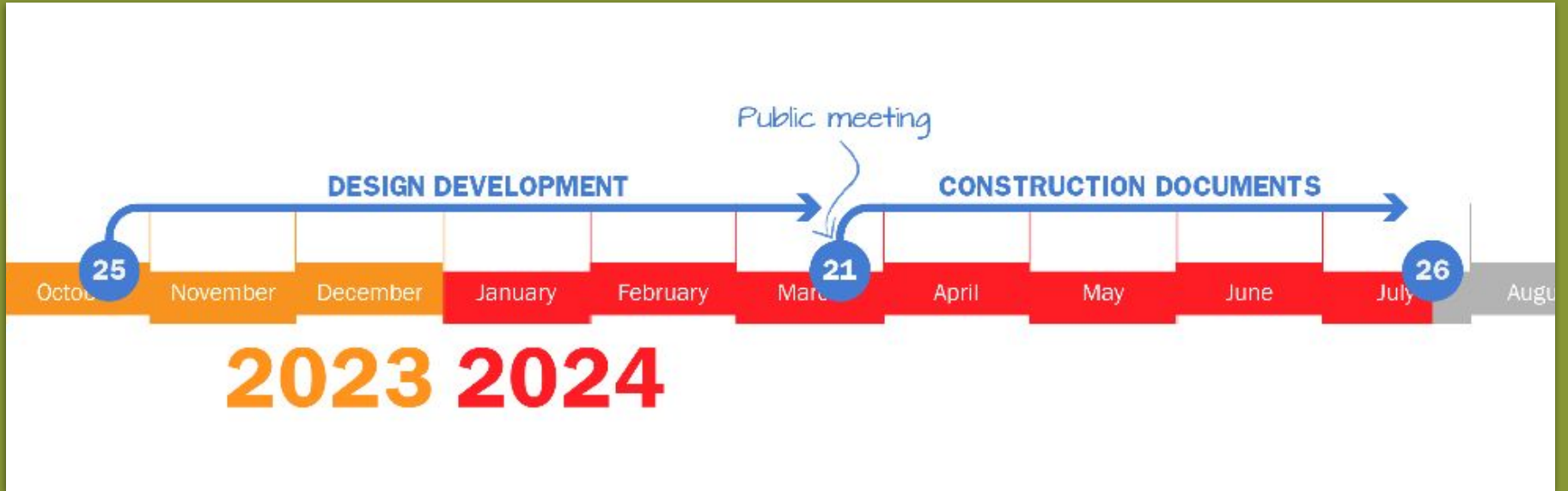
Improved tree canopy



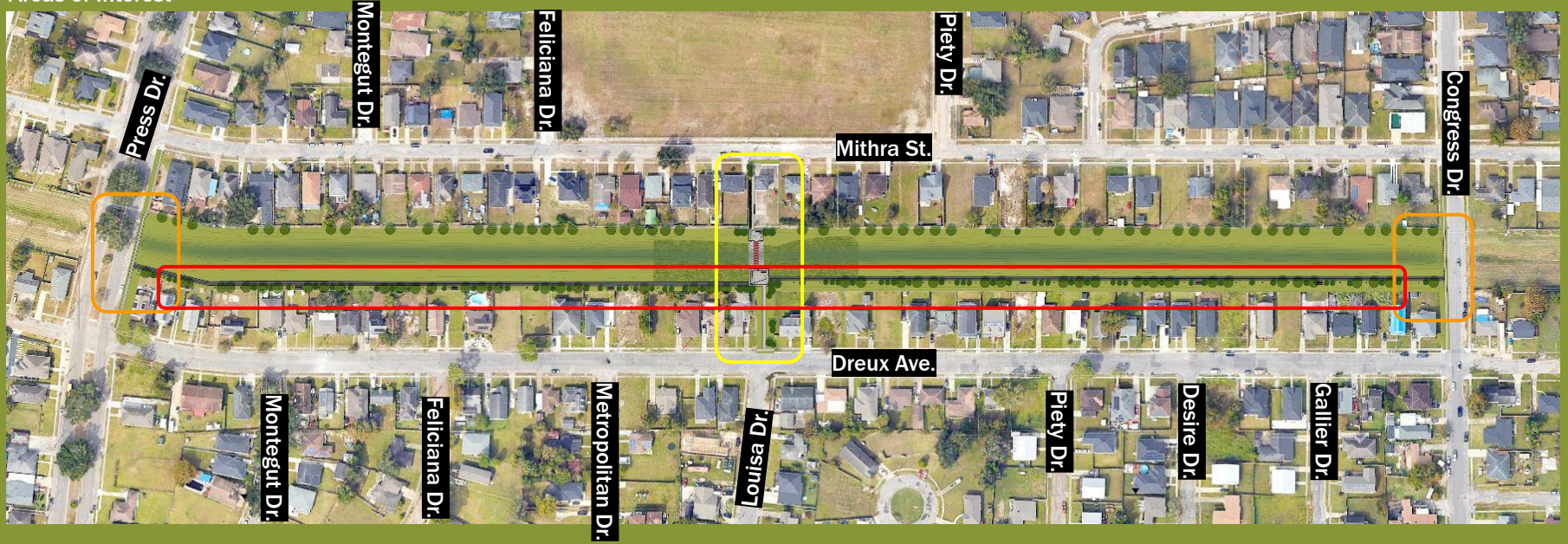
Access to recreation



Project Schedule



Areas of Interest



Press Drive



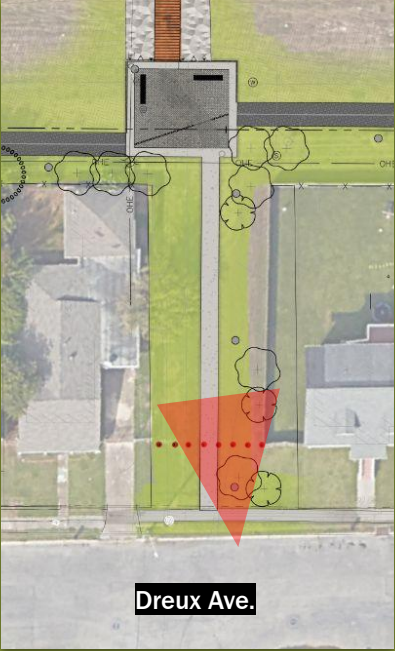
Congress Drive



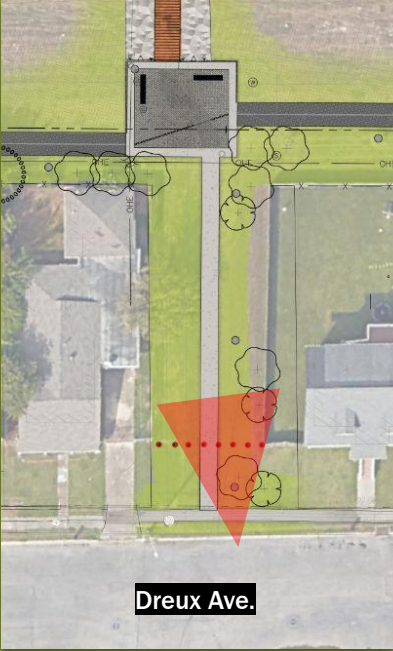
East/West Lighting



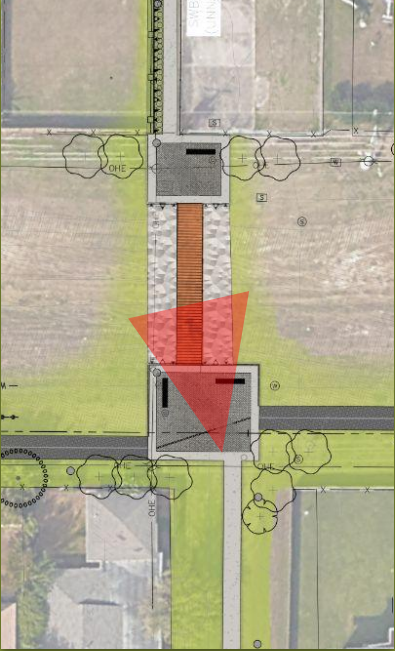
North/South Crossing



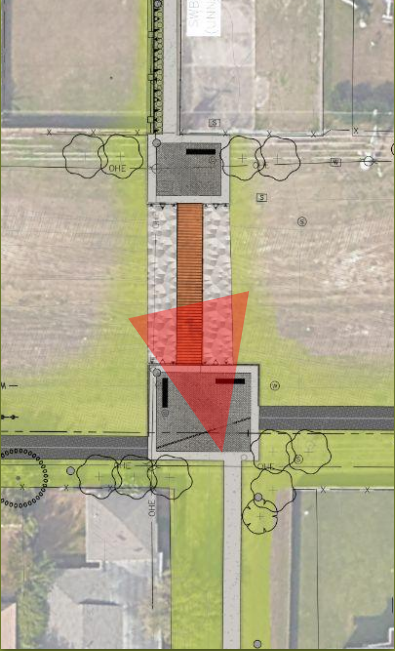
North/South Crossing



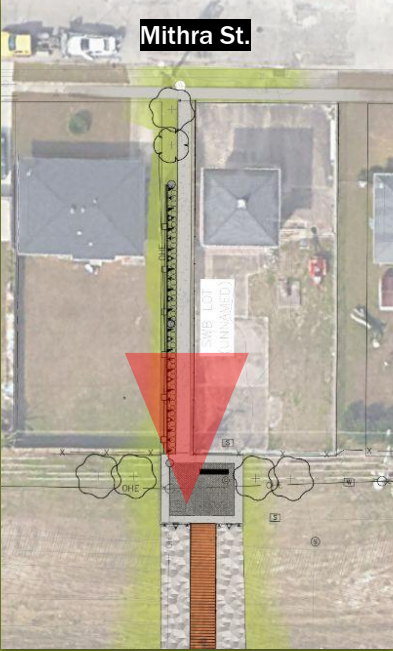
North/South Crossing



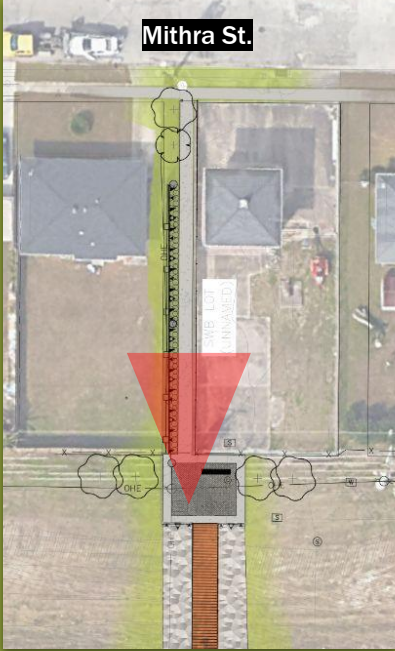
North/South Crossing



North/South Crossing



North/South Crossing





POND CYPRESS



LITTLE GEM MAGNOLIA



SWEET BAY MAGNOLIA



FOREST PANSY REDBUD



FLORIDA GAMMAGRASS



PURPLE QUEEN BOUGAINVILLEA



SANDCORD GRASS



STAR JASMINE



CAROLINA JESSAMINE

TREES & SHRUBS



PRAIRIE BLAZING FLOWER



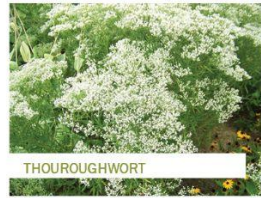
LITTLE BLUESTEM



FALSE FINGER DRAGONHEAD



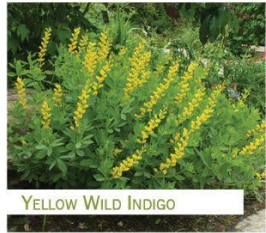
TURKEY TANGLE FOGFRUIT



THOROUGHWORT



EASTERN BLUESTAR



YELLOW WILD INDIGO



LOUISIANA IRIS



BLUE FLAG IRIS



SAND CORDGRASS



COMMON RUSH



CONEFLOWER



ANNUAL SUNFLOWER

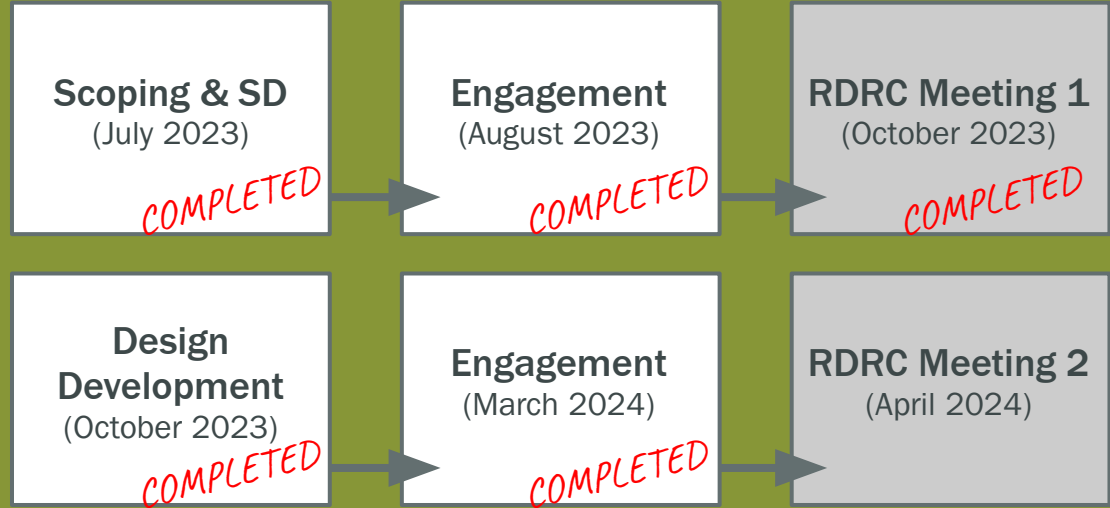
MEADOW MIX

Next Steps

The construction document phase will continue to modify the bridge abutment approaches and structural supports. The pedestrian lighting spacing and type will be adjusted for uniformity and security along the trail.

Informational signage locations will be designed for the wildflower mix. Additional shade elements will be studied for feasibility and cost, as expressed in the public meeting.

Further talks with Entergy are needed regarding limited access along Press and Congress.



Shade Schematic

As promised at the March 2024 public meeting the design team is exploring shade opportunities at the bridge.

The team is exploring adding two shade-sail structures at the south end of the bridge overhanging the seating areas.

Structural analysis of footings are to be done, along with a sun/shade study on effectiveness of the placement.

Limitations include the buried utilities, the soil composition, and the requires access for maintenance vehicles for consideration.

Lighting will be altered to accommodate if the engineering and funds work out.



Thank you for your participation!

Please take the time to ask questions or voice concerns.

For more information visit roadwork.nola.gov, send e-mail to roadwork@nola.gov
or call 504.658.ROAD (7623)

April 9th, 2024



Dwyer
Canal

GENTILLY
Resilience
DISTRICT



GENTILLY
Resilience
DISTRICT

