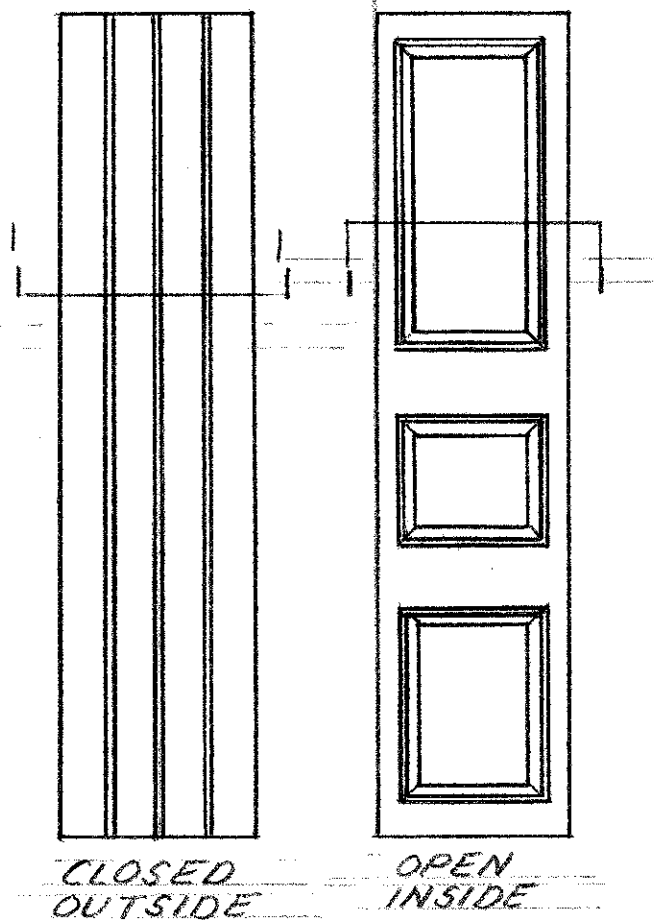
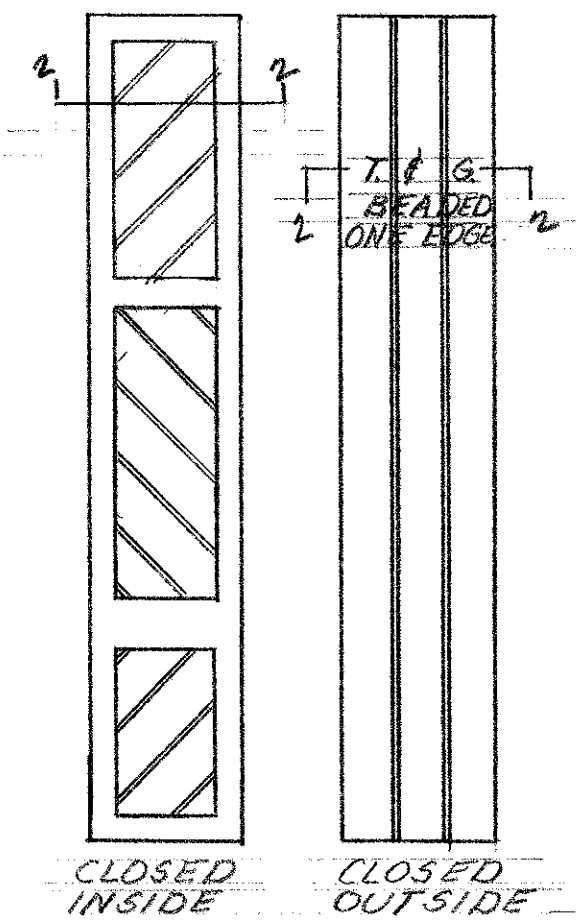


DOOR ELEVATION

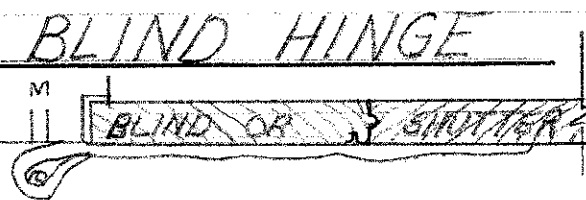
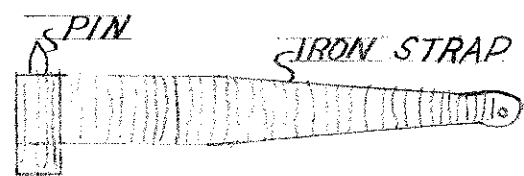


TYPICAL BLIND DOOR ELEVATIONS

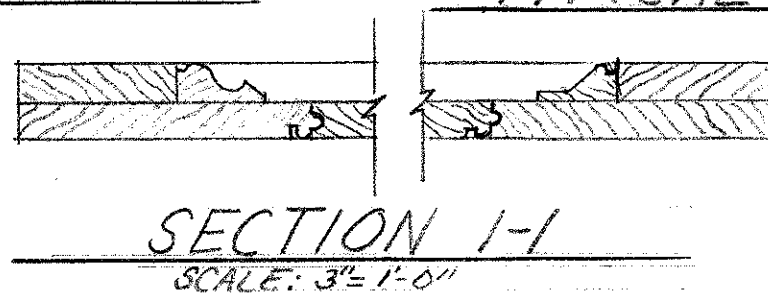
SCALE: 1/2" = 1'-0"



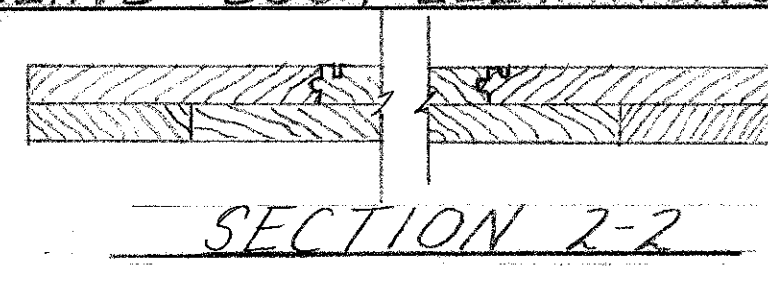
NOTE: PATTERN TO BE 1" MAX. FROM EDGE.



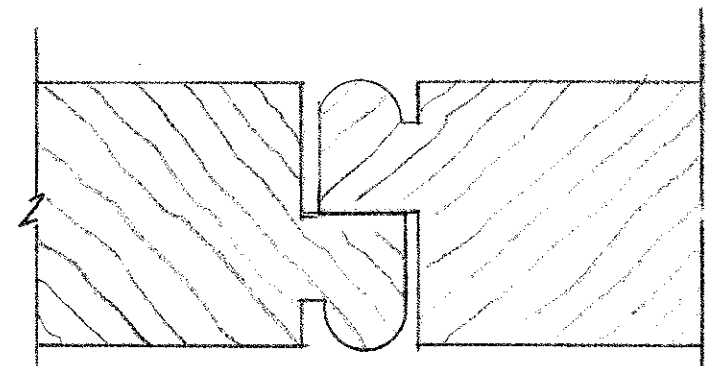
HINGE PLAN SCALE: 3" = 1'-0"



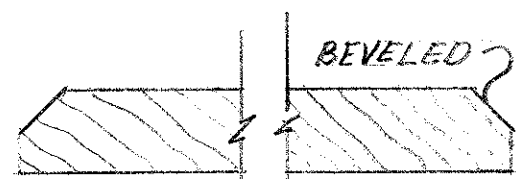
SECTION 1-1 SCALE: 3" = 1'-0"



SECTION 2-2



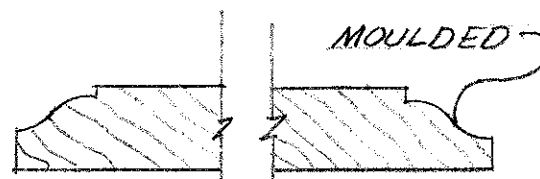
NOTE: MEETING STILES MAY BE SQUARE EDGE WITH BATTEN STRIP OR ASTRAGAL.



BATTEN #1



BATTEN #2



BATTEN #3

TYPES OF BATTENS + SCALE: 1/2" FULL SIZE

NOTE: - BLIND: A SCREEN, A COVER, AS A WINDOW OR DOOR SHUTTER
 SHUTTER: A MOVABLE COVER OR SCREEN FOR A DOOR OR WINDOW; A BLIND.
 BATTEN: A STRIP OF WOOD USED FOR NAILING ACROSS TWO OR MORE OTHER PIECES OF BOARDS.

SOLID BLINDS DETAILS
 SHEET N°5
 VIEUX CARRE COMMISSION