



Algiers Bikeway Network Pre-construction Teleconference

City of New Orleans

April 30, 2020



Agenda

- Welcome from Neighborhood Engagement – Allison Cormier
- Welcome from Mayor's Office of Transportation – Dan Jatres
 - What is Moving New Orleans?
 - Construction During COVID-19
 - Safety Guidelines for Contractors During COVID-19
- Overview of Algiers Bikeway Network – Jennifer Ruley, Department of Public Works
 - Completed, Ongoing and Upcoming Work
- Question and Answer Session – Allison Cormier

What Is Moving New Orleans?

As an initiative of Mayor LaToya Cantrell, Moving New Orleans is a multi-modal strategy that is focused on improving the safety, equity, efficiency and connectivity of the City's transportation network.

Moving New Orleans Bikes (MNOB) is the first of several focused strategies to be implemented under this framework.

MNOB is a joint initiative of the Mayor's Office of Transportation and Department of Public Works that is designed to accelerate the construction of a 75-mile connected low-stress bikeway network.

Moving New Orleans Bikes

- **April 2019** – Eight community meetings in all City Council Districts
- **August 2019** – Three citywide community meetings
- **August 2019** – Two conceptual design meetings on Algiers Corridors (Holy Cross College and Arthur Monday Center)



Moving New Orleans Bikes

Bicycle Boulevards

Low-speed, low-traffic volume streets designed to prioritize local traffic and bicycle travel



Protected Bike Lanes

Moderate- to high-speed and traffic volume streets with physically separated bike lanes



Pedestrian Safety Improvements

High-visibility crosswalks and sidewalks that complement bike facilities



Construction During COVID-19

- The construction industry has been deemed to be “essential” under both the City and State “Stay at Home” orders.
- Businesses and projects related to construction, infrastructure, and maintenance may continue to operate, and employees may continue to commute to and from work.
- This includes all construction sites (both large and small) — industrial, commercial, and residential.

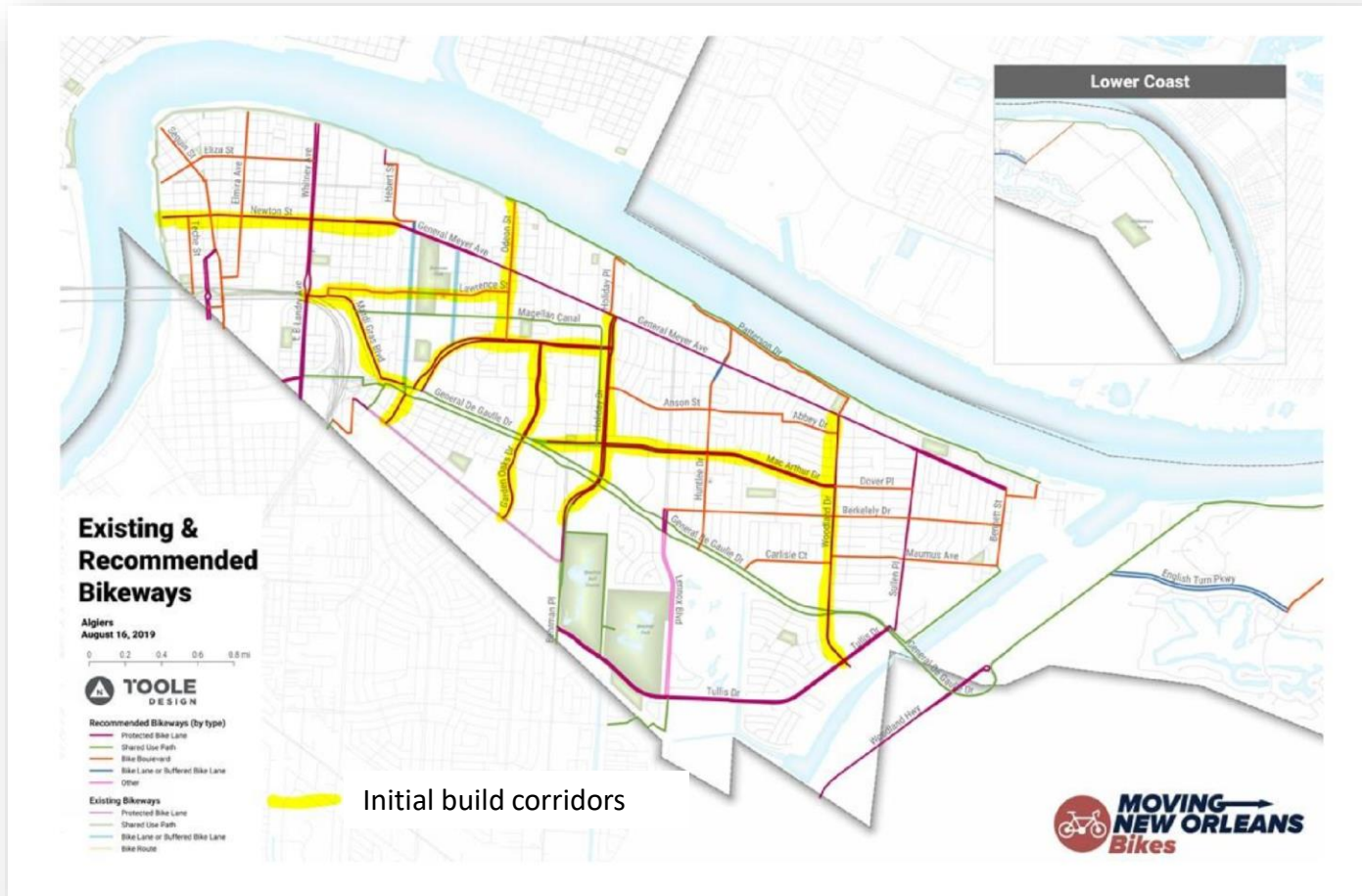


Safety Guidelines for Contractors During COVID-19

- Single point of entry into the job site and check-in/check-out of all workers.
- Temperature scan upon entry; anyone exhibiting signs of illness not allowed on site.
- Thorough daily cleaning of work areas. Wipe down of surfaces and frequently touched items.
- Handwashing stations provided with mandated proper handwashing at intervals throughout the day.
- No interactions with more than 10 people and maintaining at least 6 feet space between workers.
- Educational literature posted in multiple languages, along with daily training on appropriate conduct.
- Immediate reporting of any cases of known COVID-19.
- All progress meetings will continue as virtual meetings.



Algiers – 11 Miles of Bikeways, 11 Corridors



Algiers – 11 Miles of Bikeways, 11 Corridors

- Florence Drive (Old Behrman Highway to General de Gaulle Drive)
- Garden Oaks Drive (Old Behrman Highway to General de Gaulle Drive) - **Substantially Complete**
- Holiday Drive (Behrman Place to General Meyer Avenue)
- Lawrence Street (Hendee Street to Odeon Street)
- MacArthur Boulevard (General de Gaulle Drive to Woodland Drive)
- Mardi Gras Boulevard (L.B. Landry Avenue to General de Gaulle Drive)
- Newton Street (Mississippi River Trail to Behrman Avenue)
- Odeon Street (Wall Boulevard to Patterson Drive)
- Wall Boulevard (General de Gaulle Drive to Holiday Drive)
- Westbend Parkway (General de Gaulle Drive to Wall Boulevard)
- Woodland Drive (Tullis Drive to General Meyer Avenue)

Garden Oaks Drive Protected Bike Lanes (Old Behrman Hwy to Gen. de Gaulle Drive) – *Substantially Complete*

\$1.3M Project

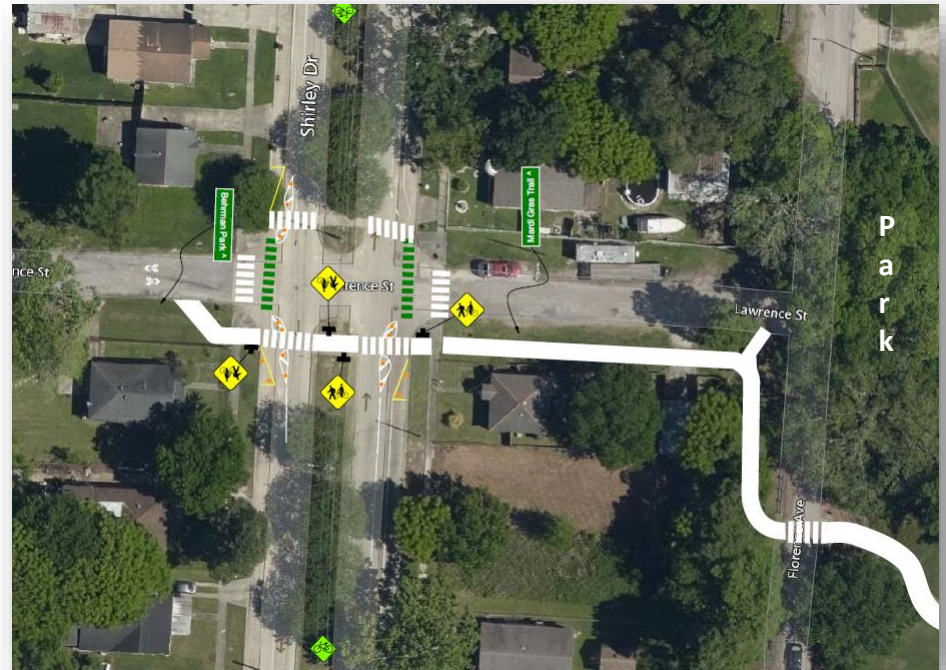
- ✓ Roadway Repairs
- ✓ Protected bike lane
- ✓ New curbs – To be installed
- ✓ Improved drainage
- ✓ Sidewalks
- ✓ Accessible curb ramps
- ✓ Green conflict markings
- ✓ Yellow center-line striping
- ✓ Streetlight Repairs



Lawrence Street Bike Boulevard and Bike/Ped Path (Hendee to Odeon Street) - *Underway*

Approx. \$239K Project

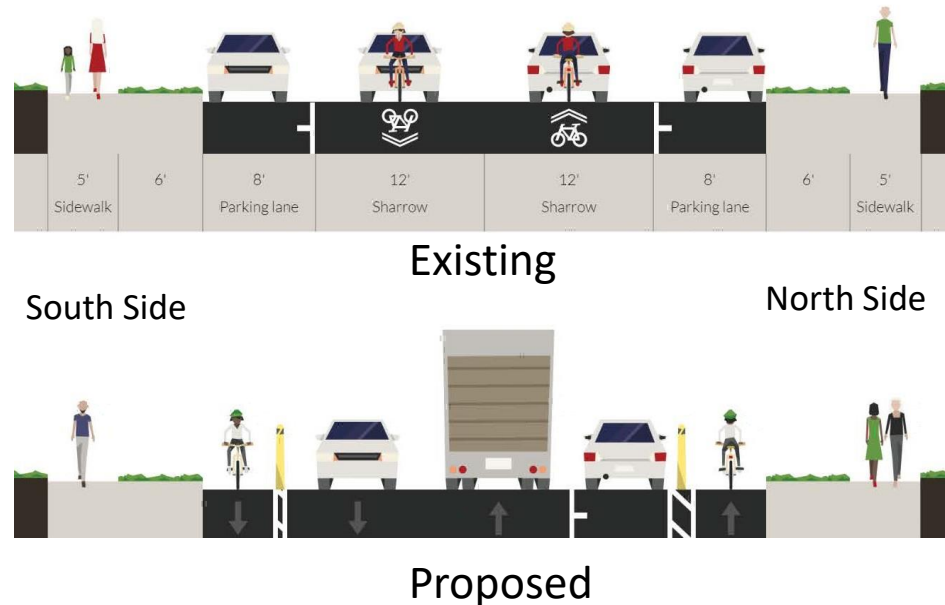
- ✓ Repaving the roadway (Sumner to Behrman Park)
- ✓ Adding curb ramps at corners
- ✓ Improving drainage
- ✓ Installing crosswalks at Shirley Drive and Behrman Ave
- ✓ Adding a bicycle route signs and shared lane markings
- ✓ Installing bike/walk path across Behrman Park
- ✓ Installing user-activated flashing beacons at Shirley
- ✓ Stop controls every 2 blocks instead of every 1 block



Newton Street Protected Bike Lanes (Elmira to Behrman) - *Underway Soon*

Approx. \$190K Project
(for entire length)

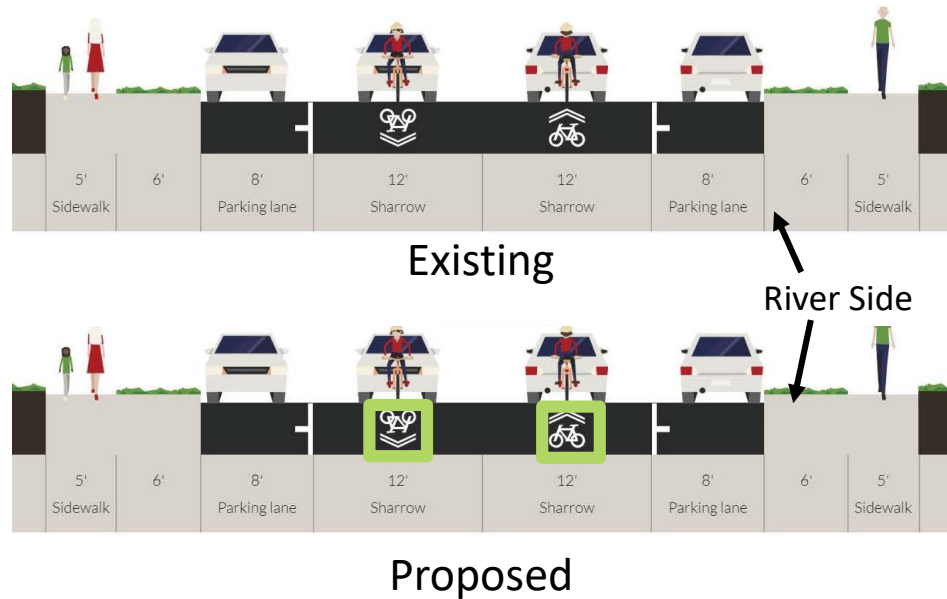
- ✓ Elmira to Behrman
(0.83 mi)
- ✓ Installing protected bike lanes in both directions
- ✓ Installing bike wayfinding signage
- ✓ Protected bike lanes transition to Bike Boulevard where roadway narrows at Elmira



*****Parking lane will shift to the north side
between Elmira and Behrman*****

Newton Street Bike Boulevard (Mississippi River Trail to Elmira) - *Underway Soon*

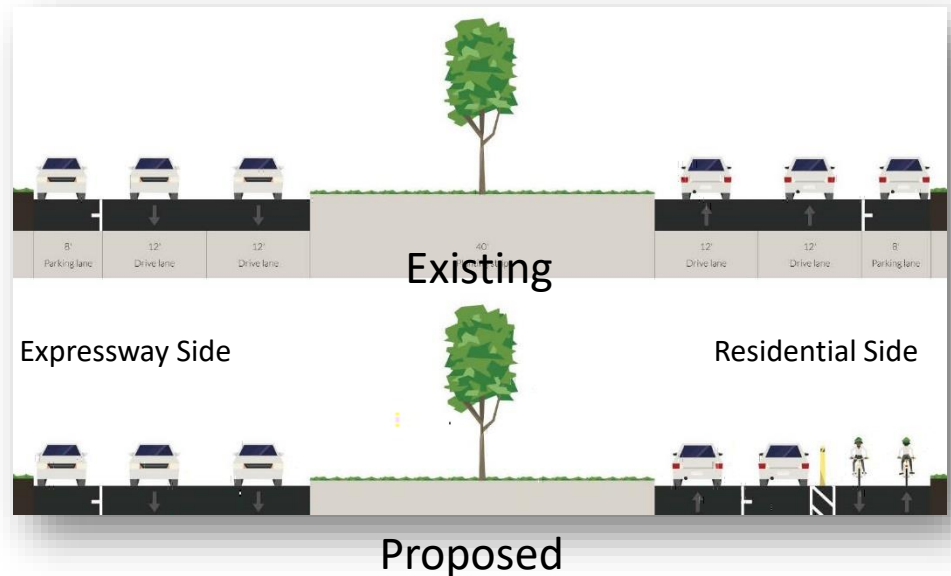
- ✓ Miss. River Trail to Elmira (0.43 mi)
- ✓ Retaining parking on both sides
- ✓ Installing enhanced shared lane markings in each direction
- ✓ Installing bike wayfinding signage



Mardi Gras Blvd. Protected Bike Lanes (L.B. Landry Avenue to Shirley Drive) – *Underway Soon*

\$319K Project (includes Florence)

- ✓ Installing 2-way protected bike lane on northbound side of street
- ✓ Adding curb ramps at corners
- ✓ Adding walk/bike signals and high visibility crosswalks at Shirley Drive and General De Gaulle
- ✓ Improving walk/bike connection to Mardi Gras Trails at L.B. Landry Avenue
- ✓ Coordinating permits with LaDOTD for General De Gaulle intersection
- ✓ Parking is retained except between Shirley and Kraft



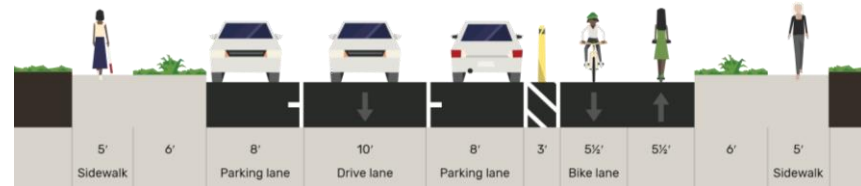
Florence Drive Protected Bike Lanes (General De Gaulle to Behrman Hwy) – *Underway Soon*

\$319K Project (includes Mardi Gras)

- ✓ Installing 2-way protected bike lanes for 3 blocks
- ✓ Installing Shared Lane and Contraflow Bike Lane for 1 block where street narrows
- ✓ Connects to Behrman Hwy 2-way Protected Bike Lanes
- ✓ Retains parking
- ✓ Maintains existing travel direction for cars and allows 2-way direction for bikes

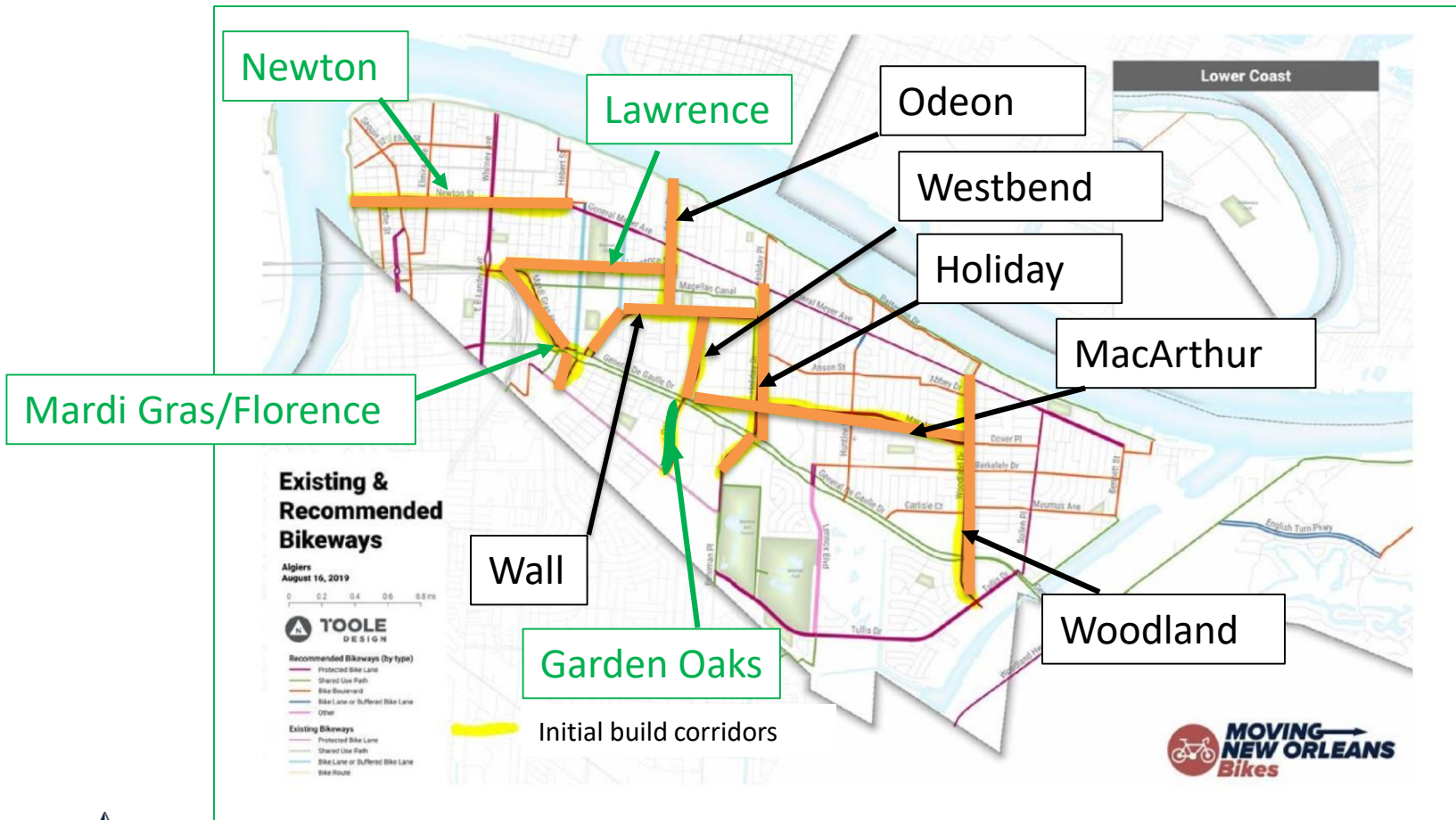


Existing



Proposed

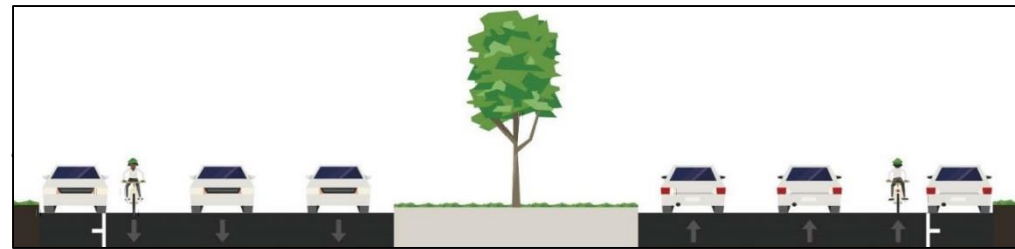
Algiers – Next 6 Corridors Scheduled for Construction



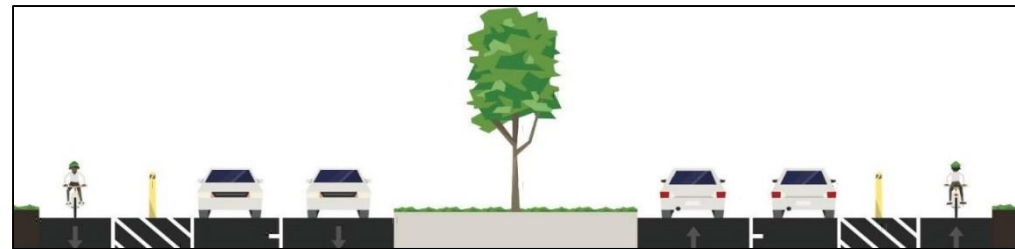
Holiday Drive Protected Bike Lanes (Behrman Pl to General Meyer Ave)

\$662K Project

- ✓ Upgrading existing bike lanes protected bike lanes
- ✓ Improving access to bus stops
- ✓ Installing crosswalks
- ✓ Improving intersection geometry
- ✓ Improving sight distances at driveways
- ✓ Integrating safety measures to reduce speeding and crashes
- ✓ Adding new bike/walk signals at

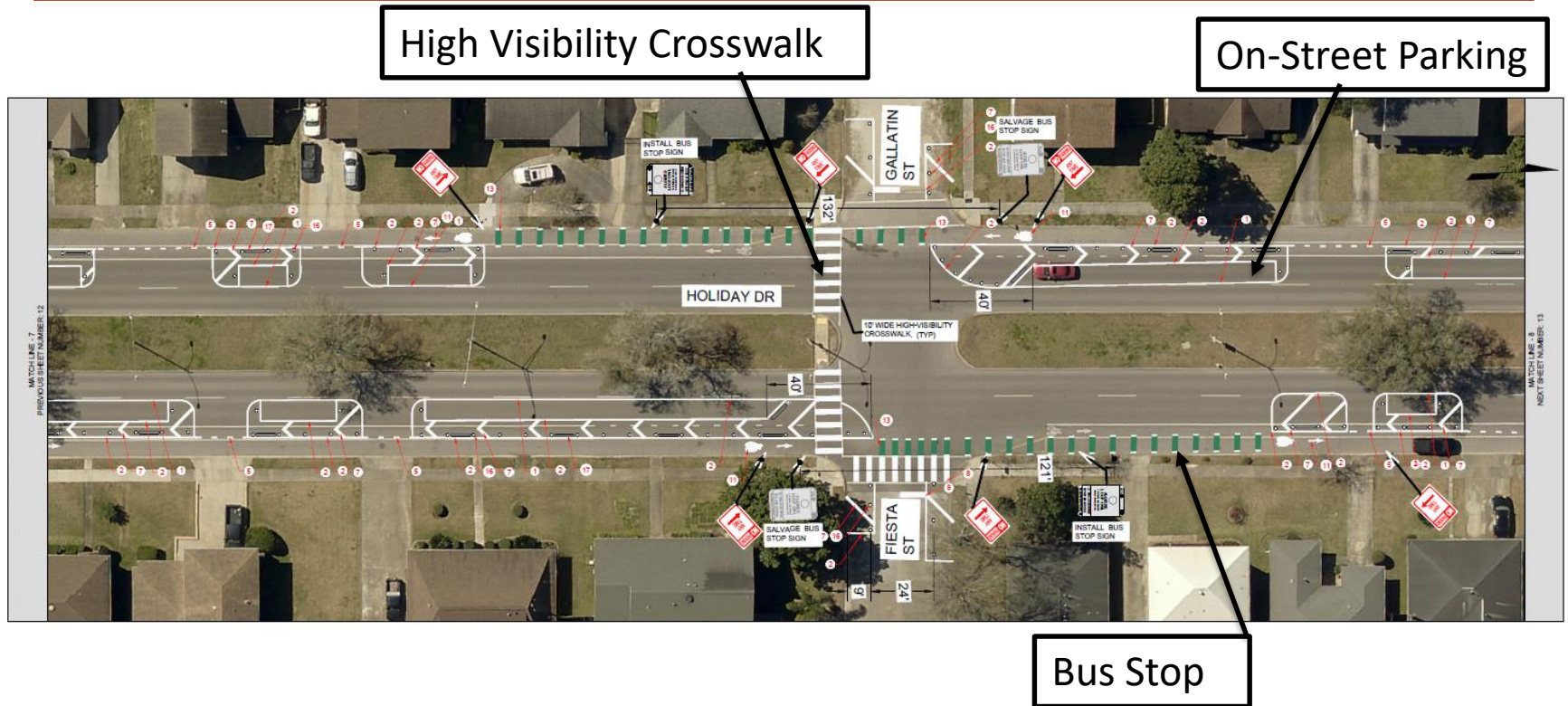


Existing



Proposed

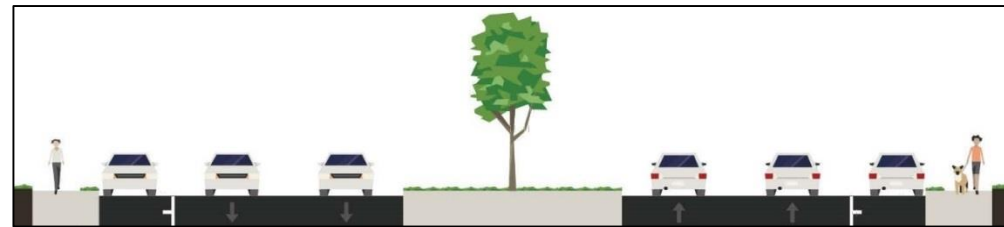
Holiday Drive near Fiesta/Gallatin St



MacArthur Boulevard Protected Bike Lanes (Gen. DeGaulle to Woodland)

\$971K Project

- ✓ Installing protected bike lanes
- ✓ Improving access to bus stops
- ✓ Installing crosswalks
- ✓ Integrating intersection geometry improvements
- ✓ and safety improvements at Holiday
- ✓ Adding bike/walk path to Westbend Pkwy and Gen DeGaulle

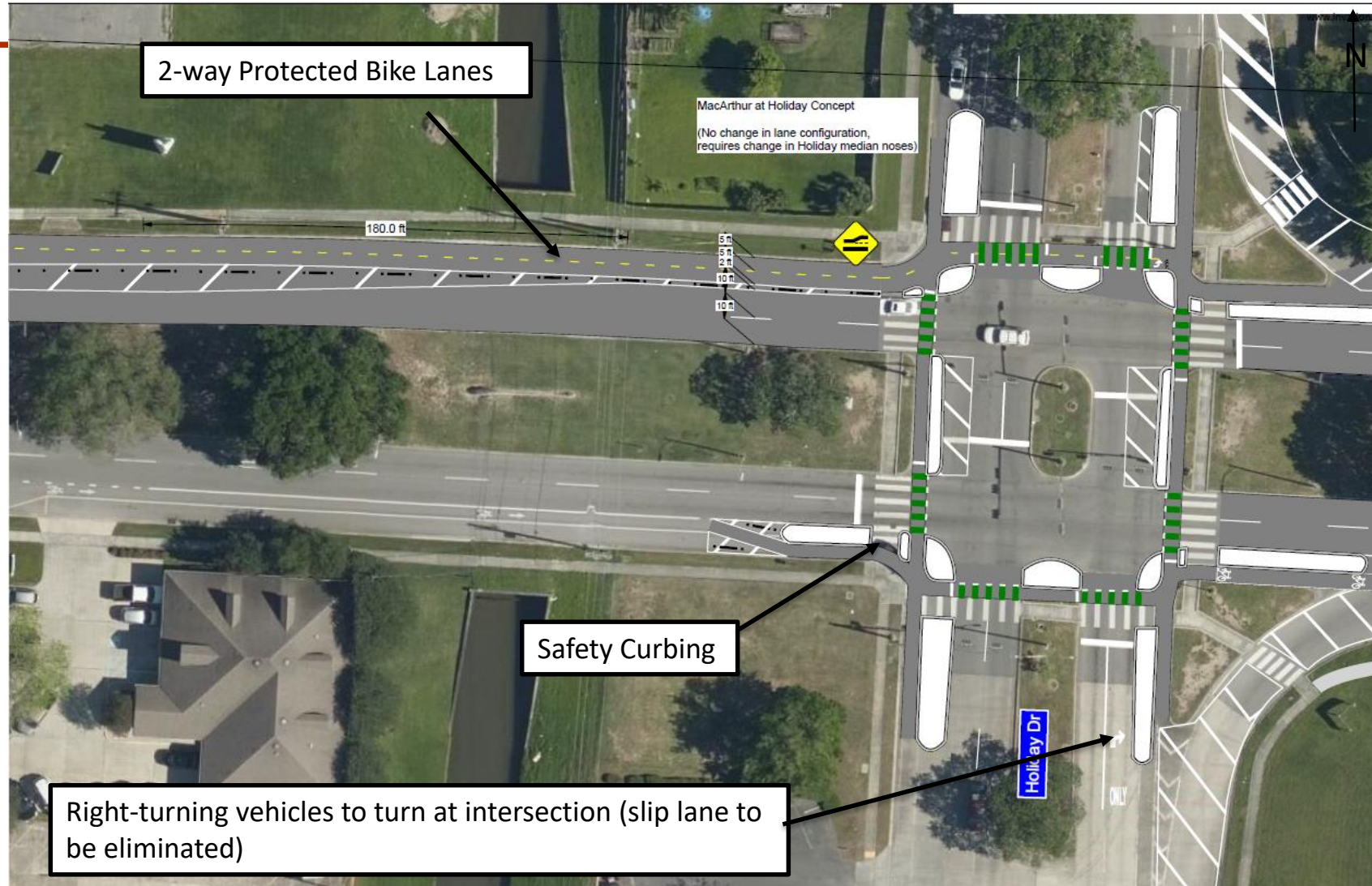


Existing

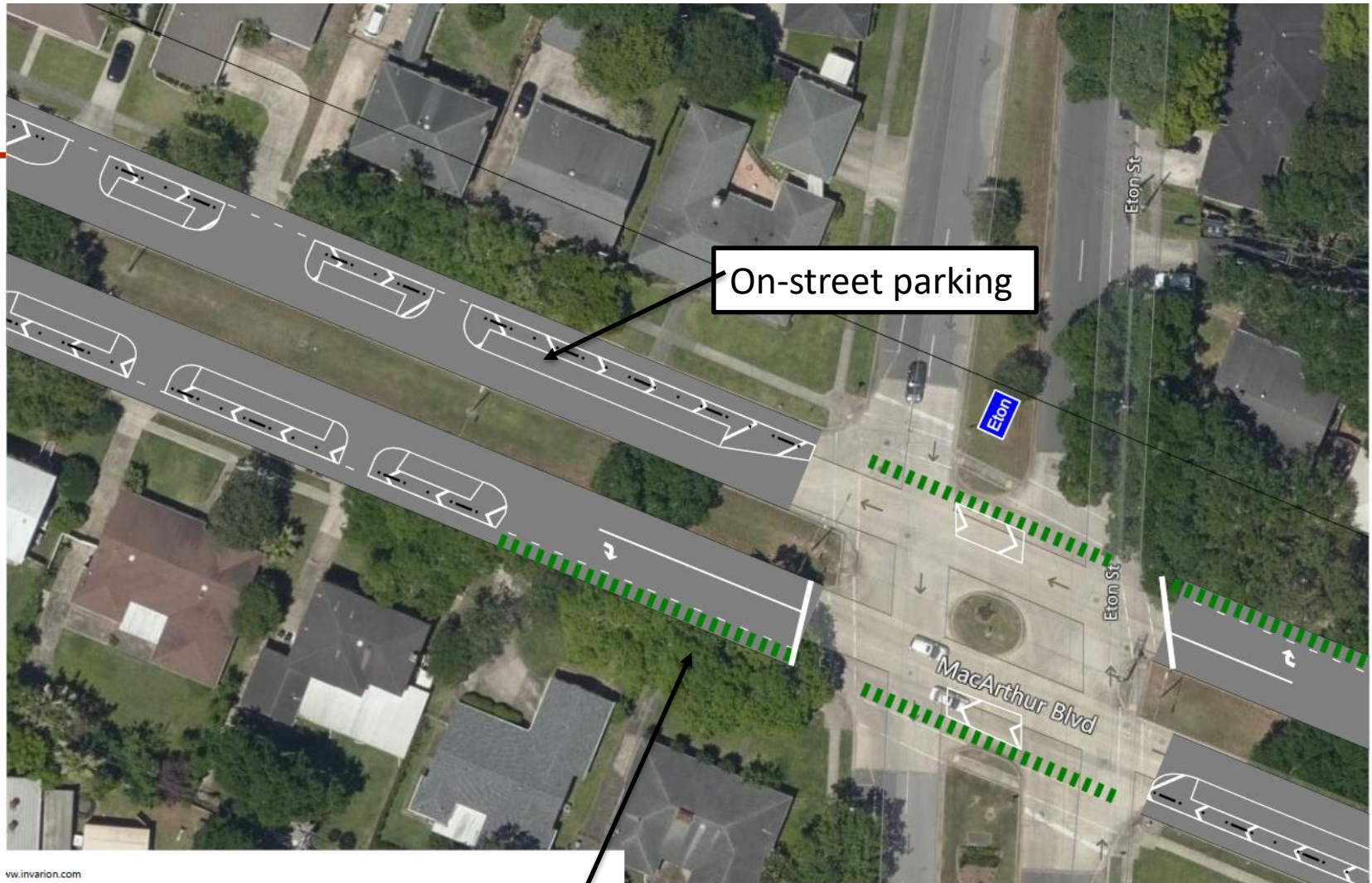


Proposed

MacArthur Blvd at Holiday Dr Safety Improvements



MacArthur at Eton



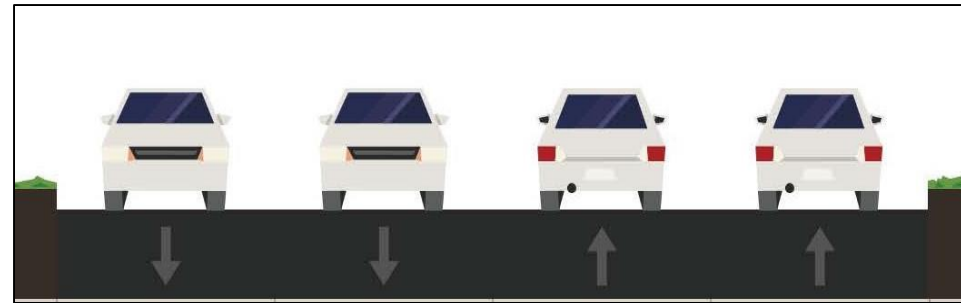
Right turn lane with bike thru lane and green conflict markings



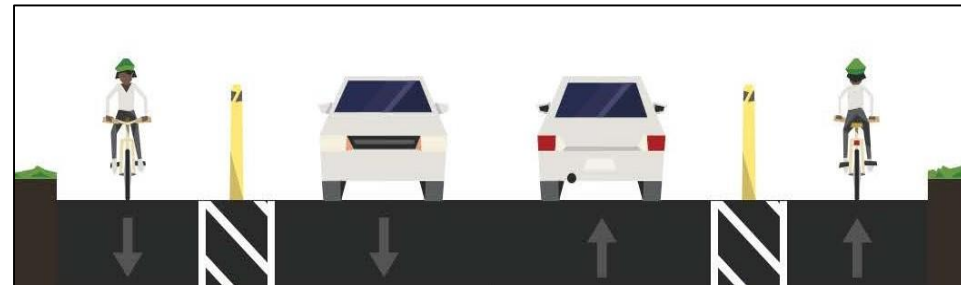
Woodland Drive Protected Bike Lanes (Tullis Dr to Gen. Meyer Ave) (LA 407)

\$306K Project

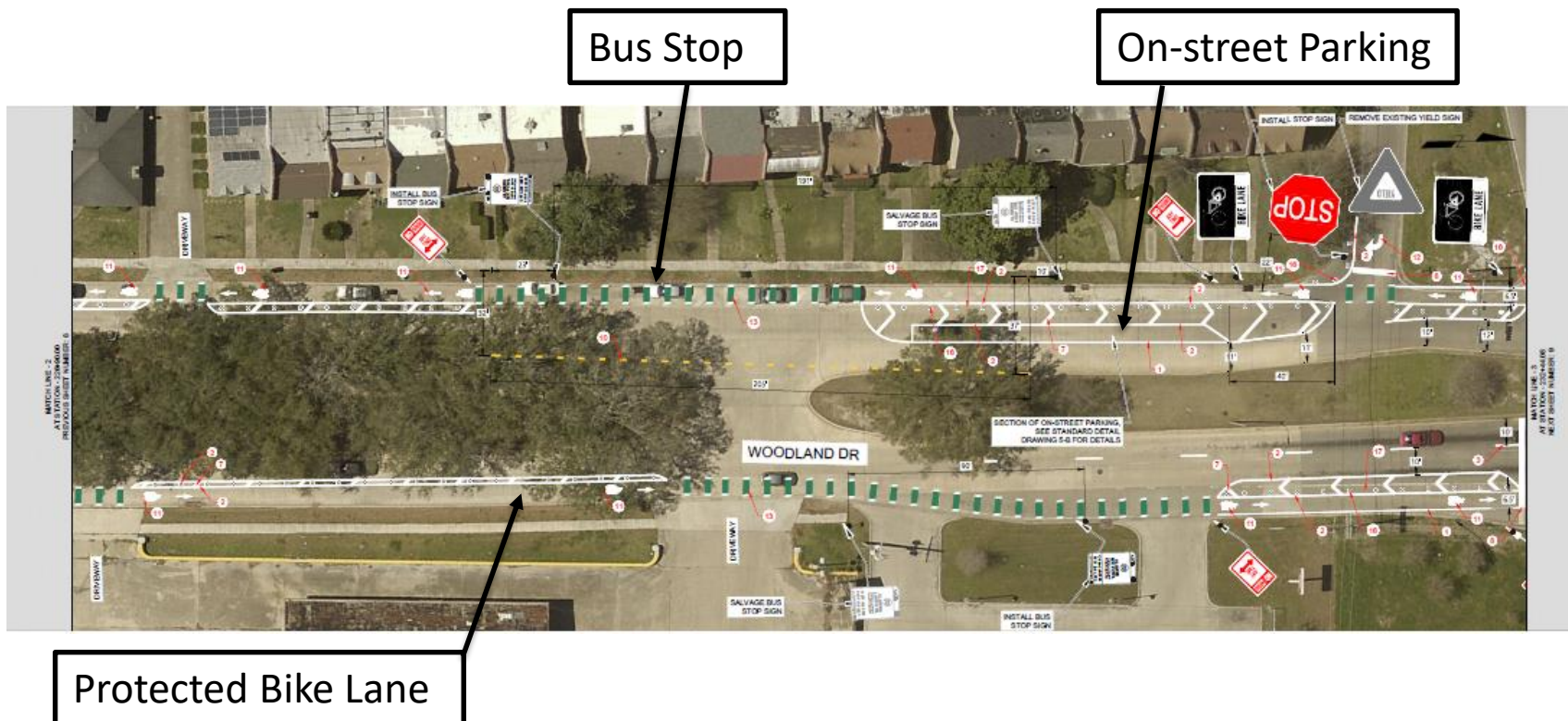
- ✓ Installing protected bike lanes
- ✓ Improving access to bus stops
- ✓ Adding crosswalks and walk/bike signal to Woodland at General DeGaulle
- ✓ Integrating safety improvements to reduce left-turn and right-angle crashes
- ✓ Coordinating permits with LaDOTD for Gen Meyer to Gen de Gaulle



Existing



Proposed



← To Tullis

To Gen. DeGaulle →

Woodland between Tullis and Gen. DeGaulle



Protected Bike Lanes



Bus Stop

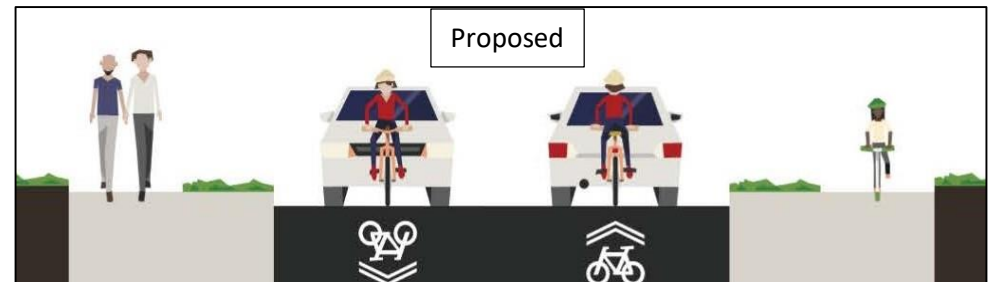
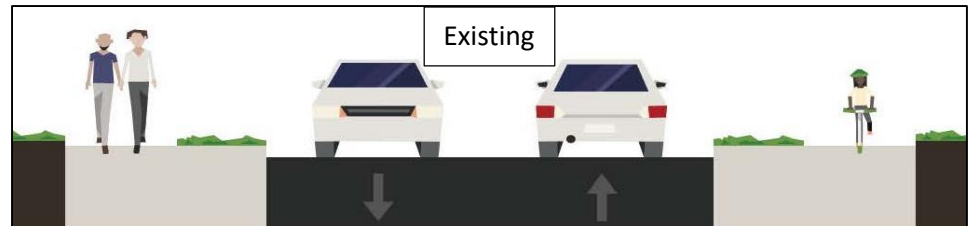
Woodland between Gen. DeGaulle and Gen. Meyer

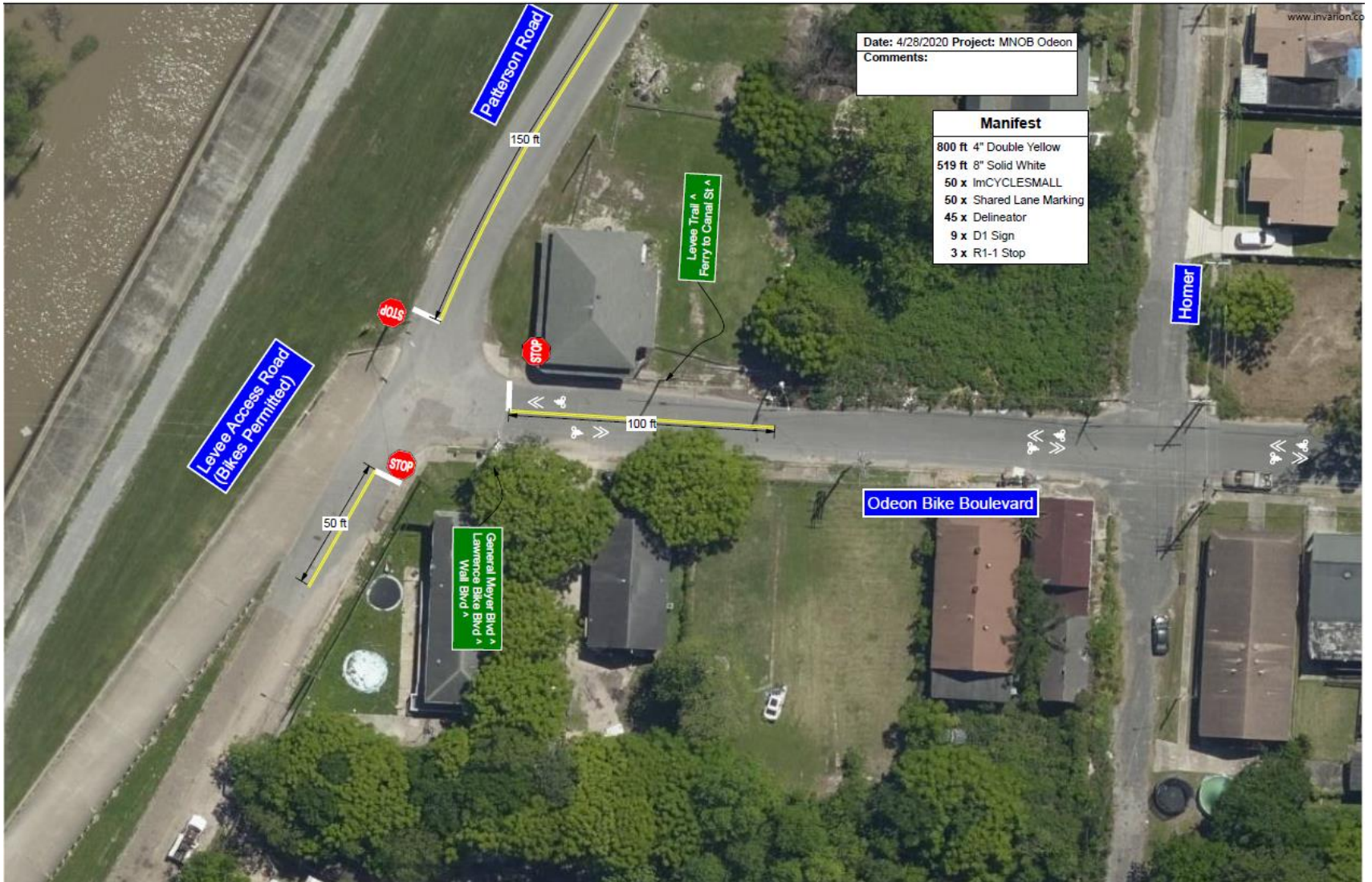


Odeon Street Bicycle Boulevard (Wall to Patterson)

\$224K Project

- ✓ Repaving the roadway (FEMA-funded)
- ✓ Adding curb ramps at corners
- ✓ Installing crosswalks at General Meyer
- ✓ Adding a bicycle wayfinding signage and shared lane markings
- ✓ Improving intersection visibility at General Meyer
- ✓ Adding stop signs and centerline striping at Patterson





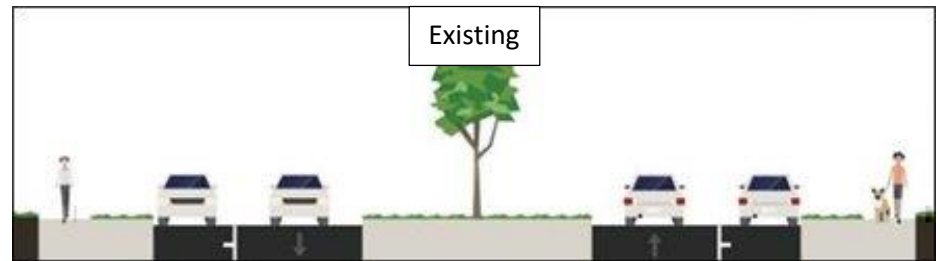
Odeon at Patterson



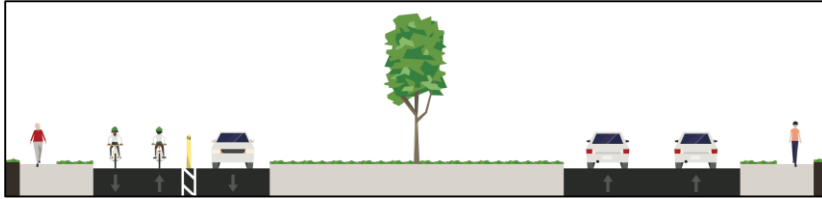
Wall Boulevard Protected Bike Lanes and Bike/Walk Path (Gen. De Gaulle to Holiday)

\$1.9M Project

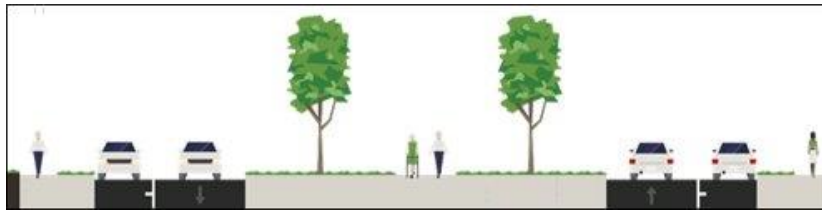
- ✓ Repairing roadway (complete)
- ✓ Installing protected bike lanes
- ✓ Installing bike/walk path
- ✓ Adding curb ramps where sidewalks are present
- ✓ Repairing sidewalks
- ✓ Adding stop controls at Pace
- ✓ Improving intersection geometry and safety
- ✓ Preserving access to driveways



Wall Boulevard Proposed



Gen. DeGaulle to Pace
2-way Protected Bike Lane



Pace to Cypress Acres
Neutral Ground Bike/Walk Path

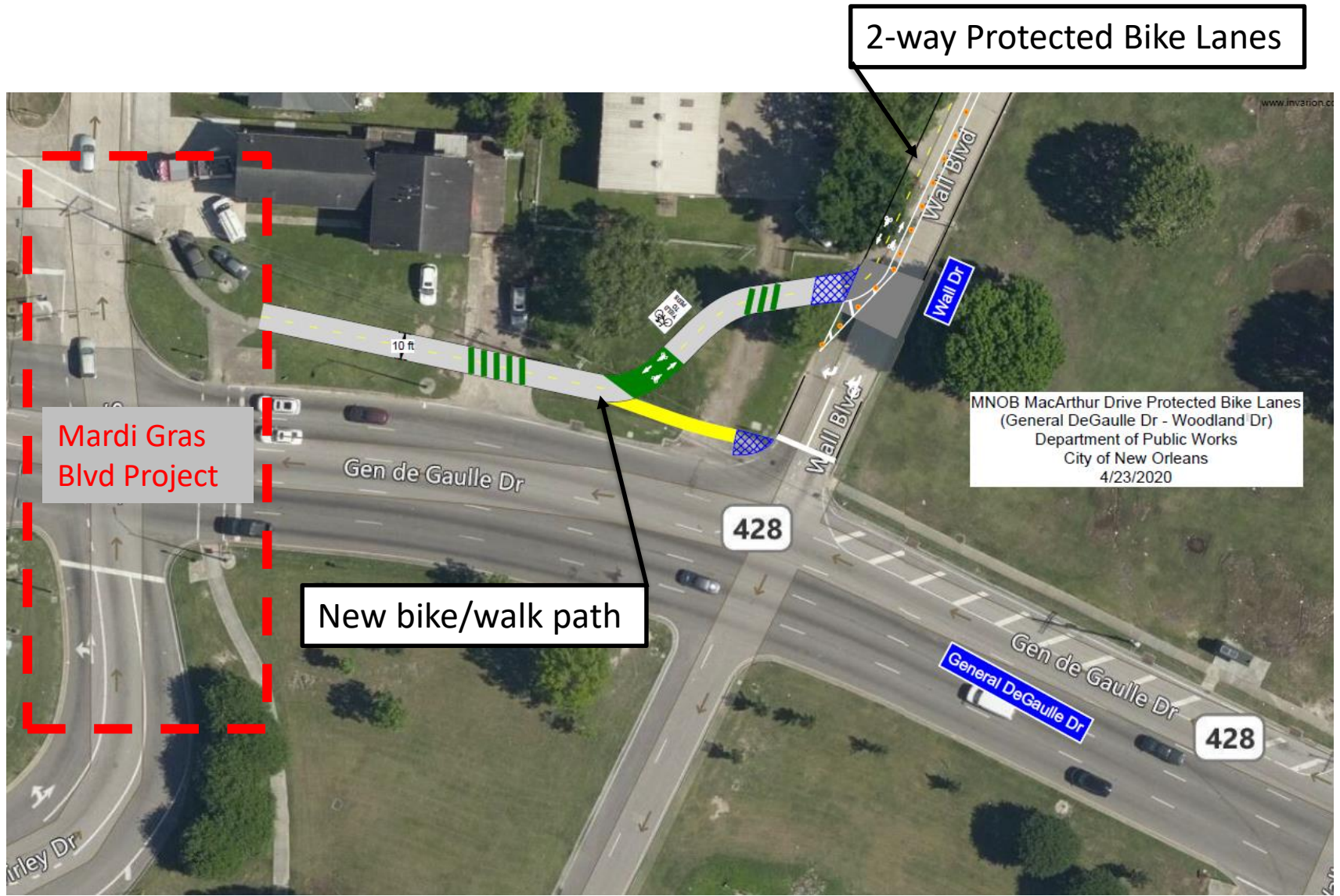


Cypress Acres to Lee's Ln
Left-side Protected Bike Lanes

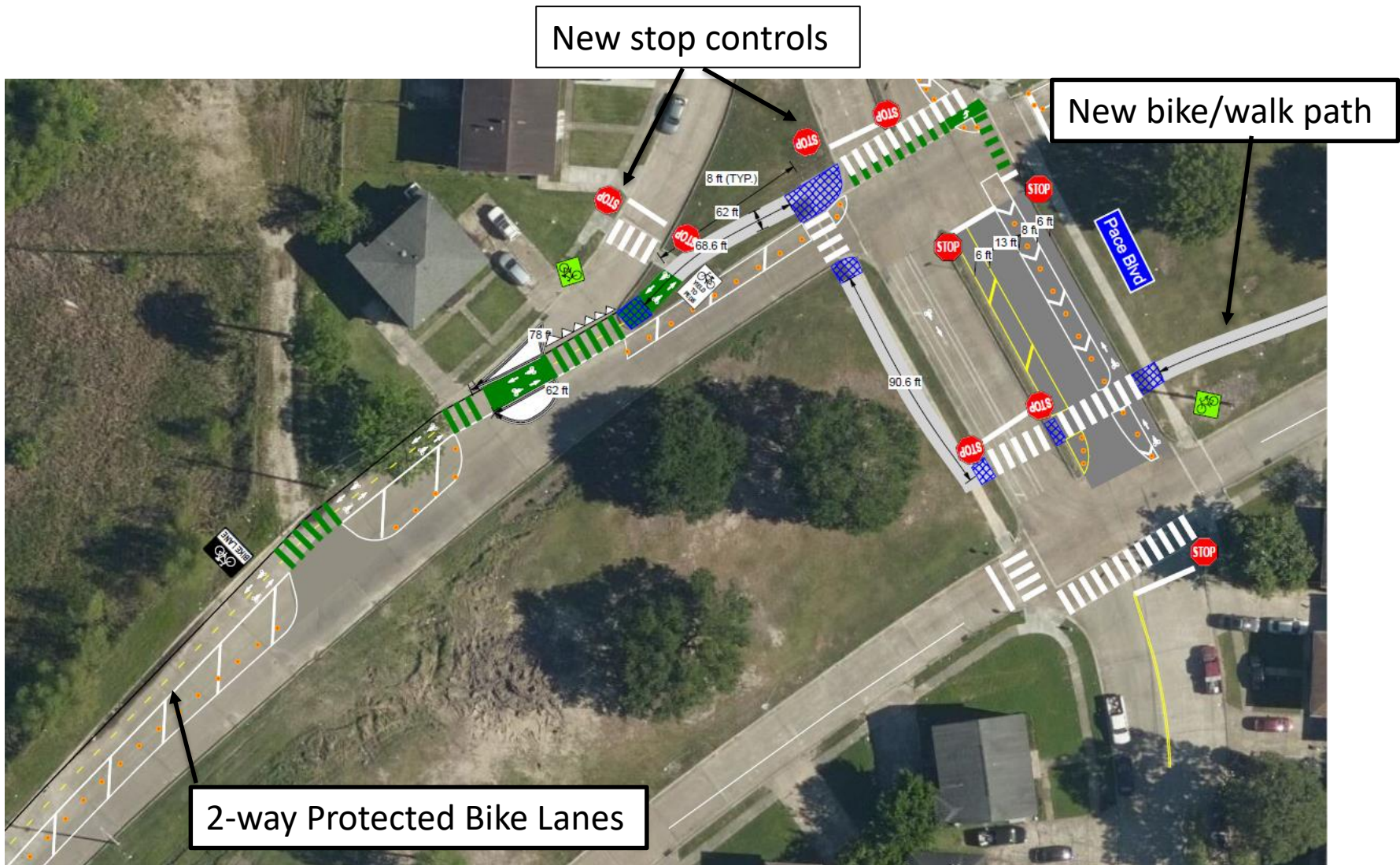


Lee's Ln to Holiday
Left-side Protected Bike Lanes



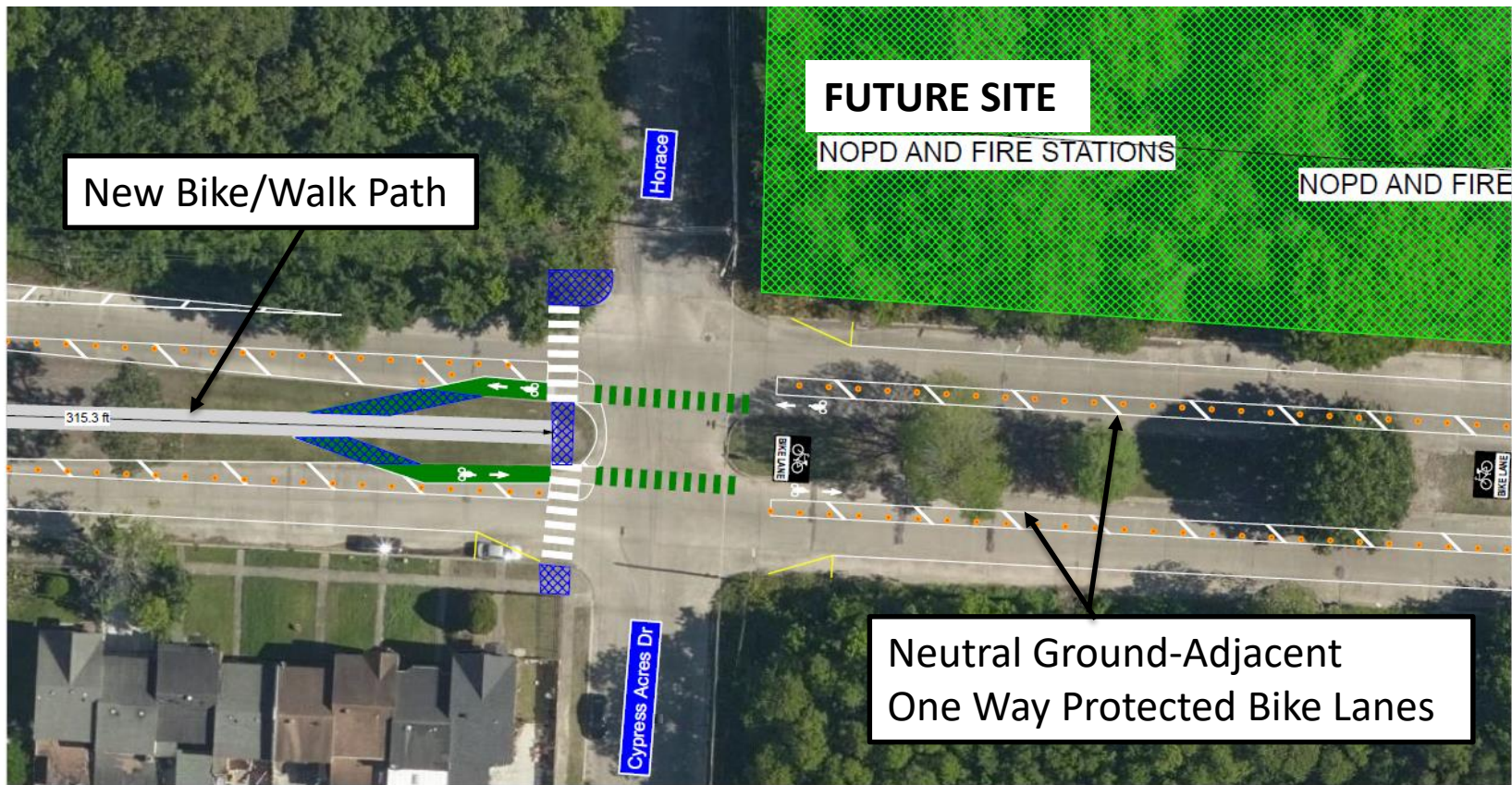


Wall at Gen. DeGaulle



Wall at Pace





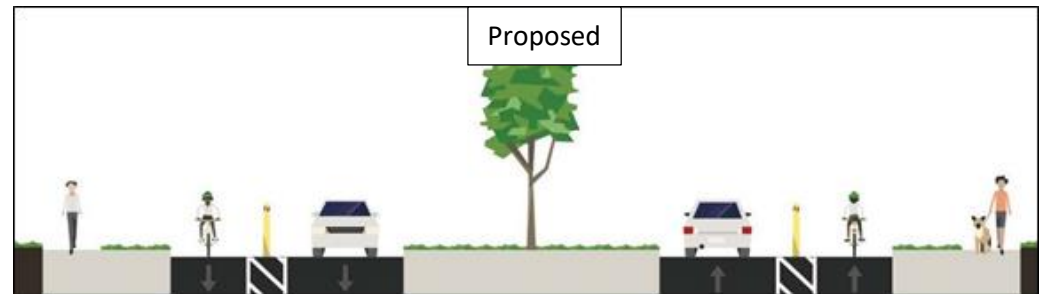
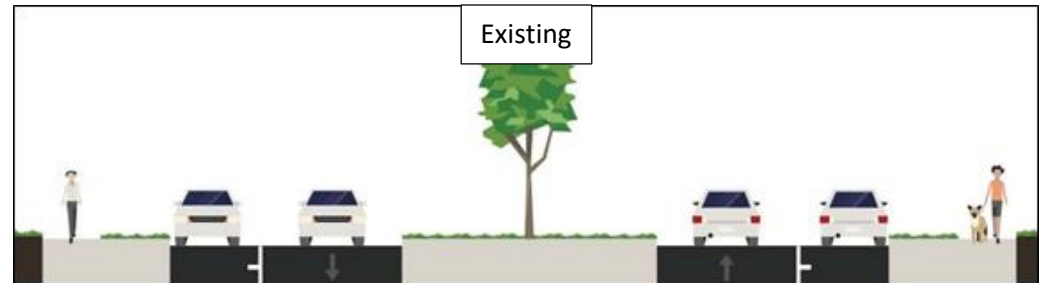
Wall at Cypress Acres

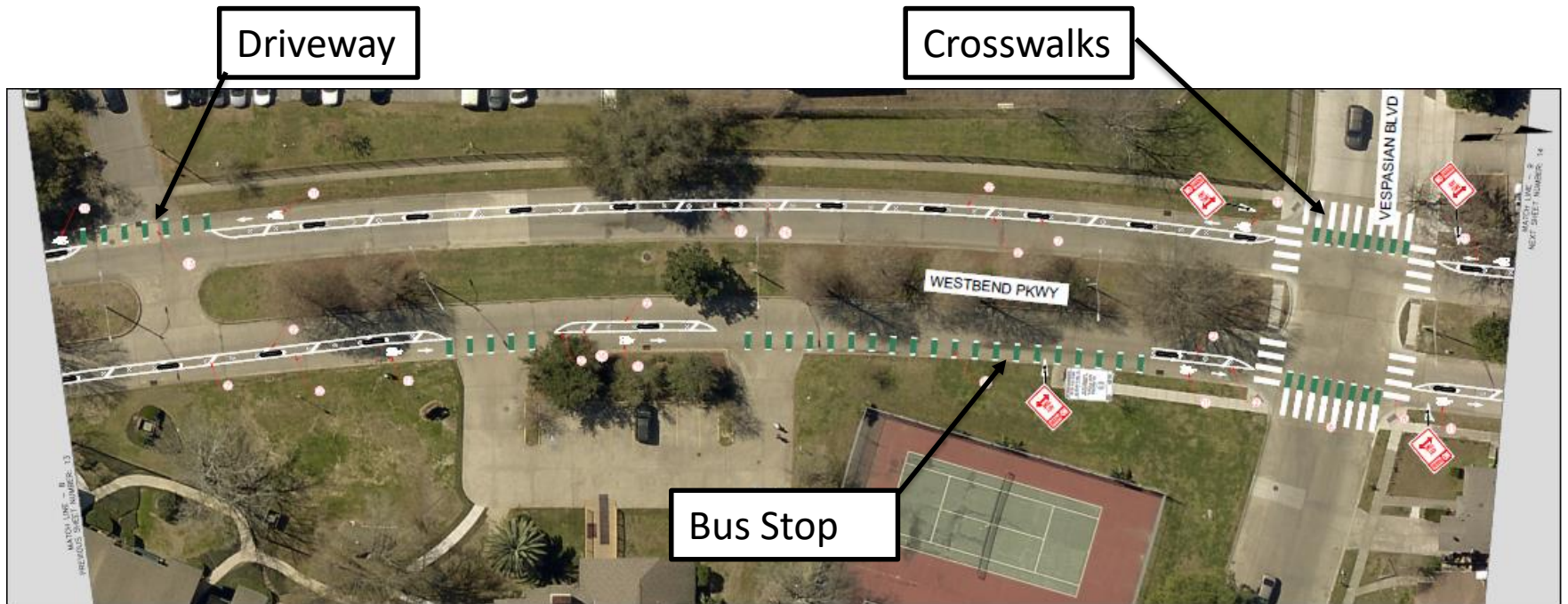


Westbend Parkway Protected Bike Lanes (Gen. DeGaulle to Wall)

\$562K Project

- ✓ Repairing roadway (FEMA-funded)
- ✓ Installing protected bike lanes
- ✓ Improving access to bus stops
- ✓ Adding crosswalks
- ✓ Adding curb ramps
- ✓ Repairing sidewalks
- ✓ Installing bike/walk signals at Gen. DeGaulle
- ✓ Preserving access to driveways





Westbend near Vespasian



Construction Schedule

2020							
Corridor	April	May	June	July	August	September	Details
Newton							Work begins week of May 4; construction duration approx 3 weeks (UPDATED)
Lawrence							Work begins week of April 20th; construction duration approx 10 weeks
Mardi Gras							Work begins week of May 11th; construction duration approx 8 weeks
Florence							Work begins week of June 8th; construction duration approx 3 weeks
Wall							Work begins week of June 1st; construction duration approx 8 weeks
Holiday							Work begins week of June 15th; construction duration approx 8 weeks
MacArthur							Work begins week of June 29th; construction duration approx 8 weeks
Odeon							See Westbank Group B FEMA project schedule for roadwork; Bikeway improvements work begins week of June 29th; construction duration approx 3 weeks
Westbend							See Westbank Group B FEMA project schedule for roadwork; Bikeway improvements work begins week of July 13th; construction duration approx 4 weeks
Woodland							Work begins week of August 3rd; construction duration approximately 8 weeks

Note: Construction schedules subject to change depending on weather, permits, and other factors.

What to Expect During Construction

Temporary construction impacts

- Additional construction equipment
- Limited parking availability
- Sounds
- Dust

Efforts to minimize construction impacts

- ✓ Construction signage is placed around the sites.
- ✓ Any temporary closures will be communicated in advance.
- ✓ Construction equipment will not be staged in areas that prohibit residential access and parking.
- ✓ Any changes to garbage and US Postal services will be communicated in advance.
- ✓ Residents will be informed throughout construction.
- ✓ Regular work hours are Monday – Friday, 7 a.m. to 5:30 p.m. Permission for occasional weekend work may be granted, if required.
- ✓ RoadworkNOLA Hotline for Questions During Construction 504.658.ROAD (7623)





Questions Contacts

Dan Jatres, Mayor's Office of Transportation,
daniel.jatres@nola.gov

Jennifer Ruley, Department of Public Works,
jeruley@nola.gov

Allison Cormier, Mayor's Office of
Neighborhood Engagement,
allison.cormier@nola.gov

City of New Orleans

