

TRANSIT ORIENTED COMMUNITIES

PUBLIC MEETING

APRIL 14, 2021

Strengthening the link between transit
and communities

INTRODUCTIONS

- **Kyle Shelly**, Mayor's Neighborhood Engagement Office
- **Laura Bryan**, Office of Transportation
- **Bob Rivers**, City Planning Commission
- **Vivek Shah**, New Orleans Regional Transit Authority
- **Joanna Farley**, City Planning Commission

AGENDA

- Define Transit Oriented Communities
- Characteristics of Transit Oriented Communities
- Benefits of Transit Oriented Communities
- About the Transit Oriented Communities Study
- **Input:** what is your neighborhood experience?
- **Input:** what TOC characteristics are important to you?
- Q&A



TRANSIT ORIENTED COMMUNITIES

Transit Oriented Communities optimize the link between **transit infrastructure** and the **surrounding neighborhoods**



CHARACTERISTICS OF TRANSIT ORIENTED COMMUNITIES

COMPACT AND HUMAN-SCALED DESIGN

- Streets and building design make it pleasant to travel on foot
- More housing options available near high frequency transit service
- Neighborhood layout reduces travel distance for daily activities
- Improved transit infrastructure makes transit more pleasant and convenient to use

COMPLETE NEIGHBORHOODS



- People have safe and convenient access to key businesses and services (grocery, libraries, green space) within a short walking, biking or transit trip
- Neighborhoods have a strong sense of place and “neighborhood feel”
- Efficient land use helps to lower transportation costs while improving access to essential services

SAFE STREETS

- Streetscapes, including street trees and quality street crossings, support a safe pedestrian experience
- Pedestrian and bicycle amenities are integrated near transit stations
- Station and street improvements make waiting for the bus a safe and comfortable experience



DIVERSE HOUSING OPPORTUNITIES



- Affordable housing opportunities located near transit corridors support a more equitable city
- In addition to supporting new affordable housing, existing affordable housing is protected to prevent displacement
- Coordinating housing and transit benefits residents, transit service, and the local economy

SUPPORTIVE LOCAL BUSINESS ENVIRONMENT



- Neighborhood-scaled businesses offer essentials for nearby residents, reducing travel trips
- Local business areas near transit are supported by transit riders
- Residents have improved access to job centers and economic opportunities

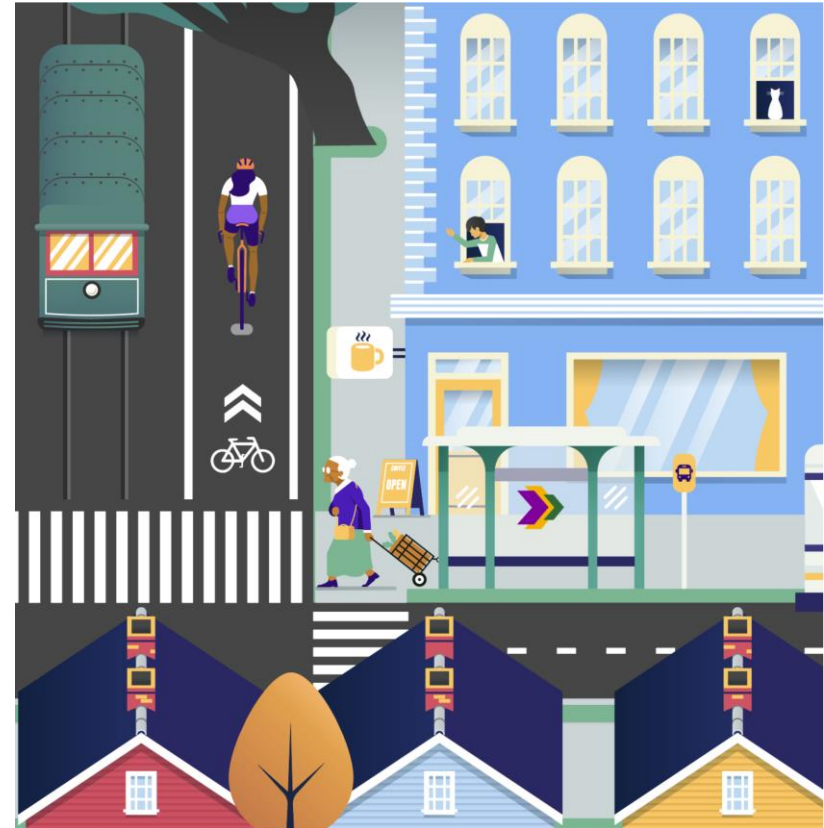
MULTI-MODAL TRANSPORTATION OPTIONS



- Transit is convenient and comfortable to access
- Other transportation modes are supported alongside transit, such as bicycle and pedestrian infrastructure
- Increased transit ridership lowers vehicle emissions, improving air quality and lowering climate impact

TRANSIT ORIENTED COMMUNITIES BENEFITS:

- Increased transit ridership
- Economic development opportunities
- Safer streets
- Strong neighborhoods, sense of place
- Lower climate impact
- Improved air quality – reduction in traffic



GOALS OF THE TOC STUDY



Cultivate Active, Vibrant, and Sustainable Communities through enhanced design standards.



Encourage Transit Ridership by increasing safety, accessibility, and activity around transit stops and reducing space devoted to private vehicles.



Prioritize Equitable Development that preserves existing affordable units and incentivizes new affordable housing close to public transit and employment

GOALS OF THE TOC STUDY



Attract, Retain, and Grow Business Opportunities within Transit Oriented Communities and corridors.



Allow Density & Mixed-Use Development that includes housing, retail, and offices within walking distance to transit stops.

WHAT WILL THE STUDY PRODUCE?

- A flexible framework for developing transit-oriented communities across the City
- Recommendations for transit-supportive approaches in land-use, transportation, economic development and housing
- Metrics to track the effects of any resulting changes

THE FRAMEWORK

NEW ORLEANS TOC FRAMEWORK

COMMUNITY
ENGAGEMENT

TRANSPORTATION

ECONOMIC
DEVELOPMENT

LAND USE

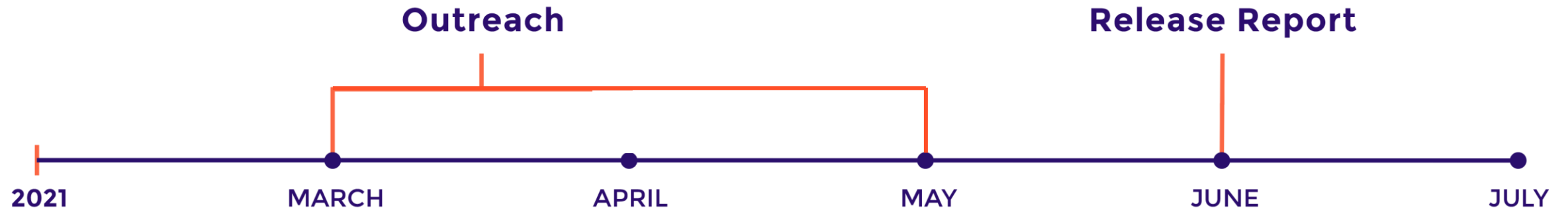
HOUSING

HOW WILL THE STUDY BE USED?

- To further institutionalize transit supportive programming
- To direct funding thoughtfully throughout the City in a way that supports the core needs of our people



TIMELINE



March-May 2021: Outreach
June 2021: Release Report

WHAT IS YOUR NEIGHBORHOOD EXPERIENCE?

- **Neighborhood amenities** – what can you currently access in your neighborhood (green space, grocery store, corner store?)
- **Road safety** – what does it feel like to cross major streets in your neighborhood?
- **Housing opportunities** – what is the mix of housing types in your neighborhood (housing design, renters, owners, etc)?
- **Transit use**– why do you decide to use or not use transit?
- **Access to jobs** – what is your commute like?
- **Sense of place** – what are the defining characteristics of your neighborhood?

WHAT TRANSIT ORIENTED COMMUNITIES CHARACTERISTICS ARE IMPORTANT TO YOU?

- Compact and human-scaled design
- Complete neighborhoods
- Safe streets
- Diverse and affordable housing opportunities
- Supportive local business environment
- Multi-modal transportation options
- Reduced vehicle emissions
- What else?

Q&A

TELL US MORE

We want your input!

Take our Survey online:

- [Transit Oriented Communities Survey](#)
- [Nola.gov/Transportation/transit-oriented-communities](https://nola.gov/Transportation/transit-oriented-communities)

CONTACT US



toc@nola.gov