



CITY OF NEW ORLEANS

**BlightSTAT**

May 5, 2011

# Agenda

**8:00-8:05 Intro & Announcements**

**8:05-8:25 Inspections**

**8:25-8:55 Hearings**

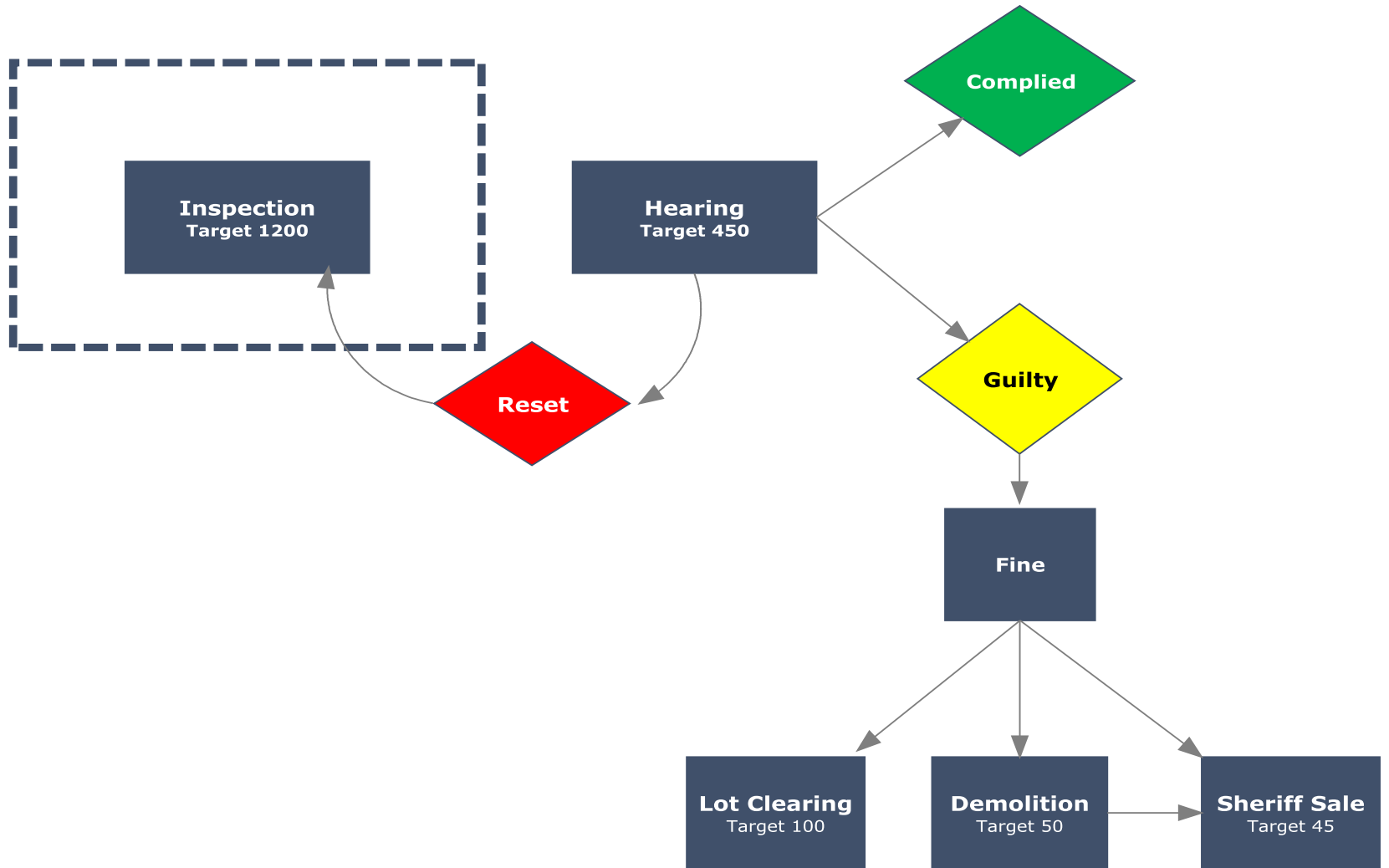
**8:55-9:30 Abatement & Disposition**

Blight**STAT** feedback form on back page of presentation

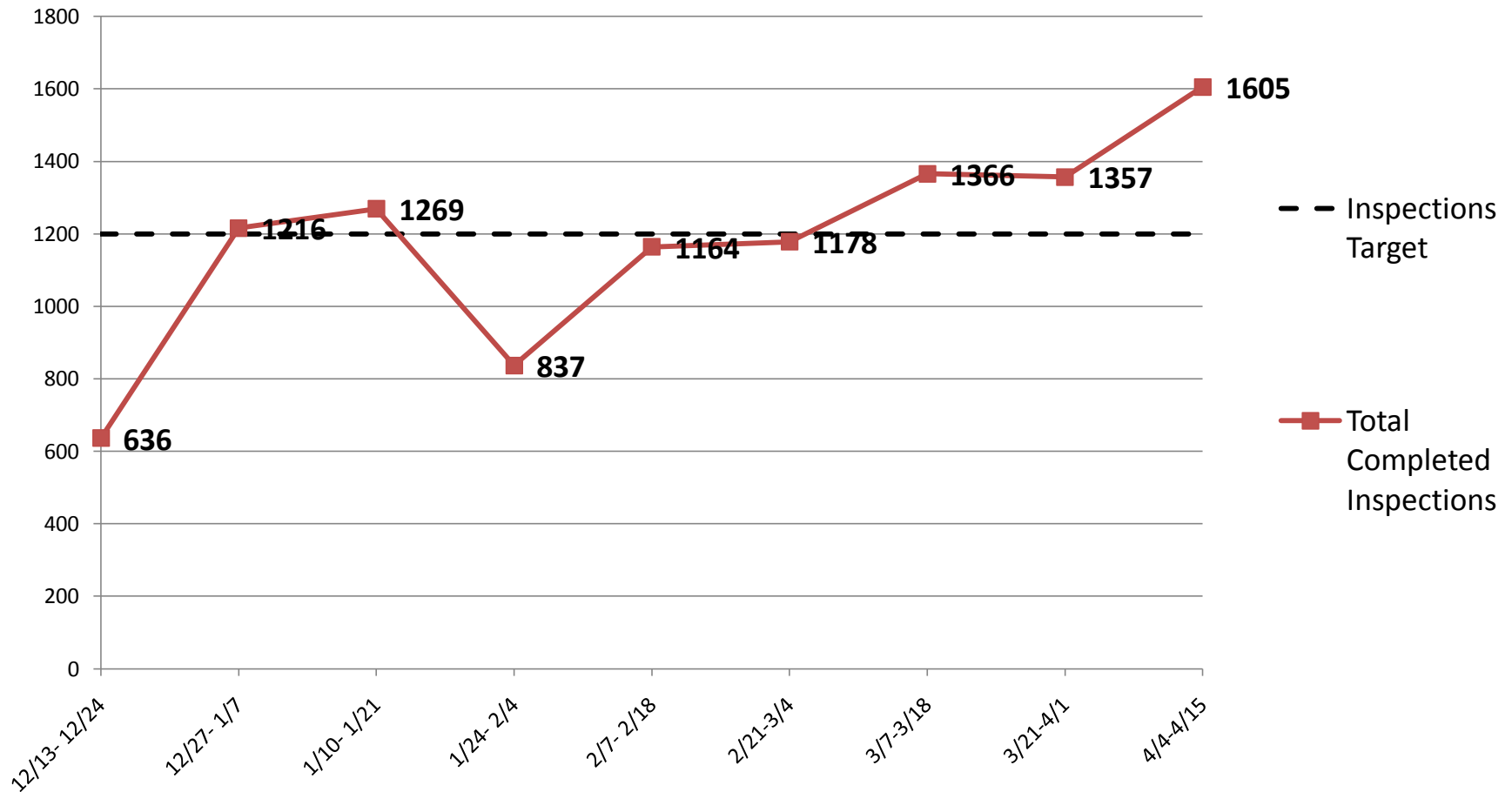


# Code Enforcement Process Map

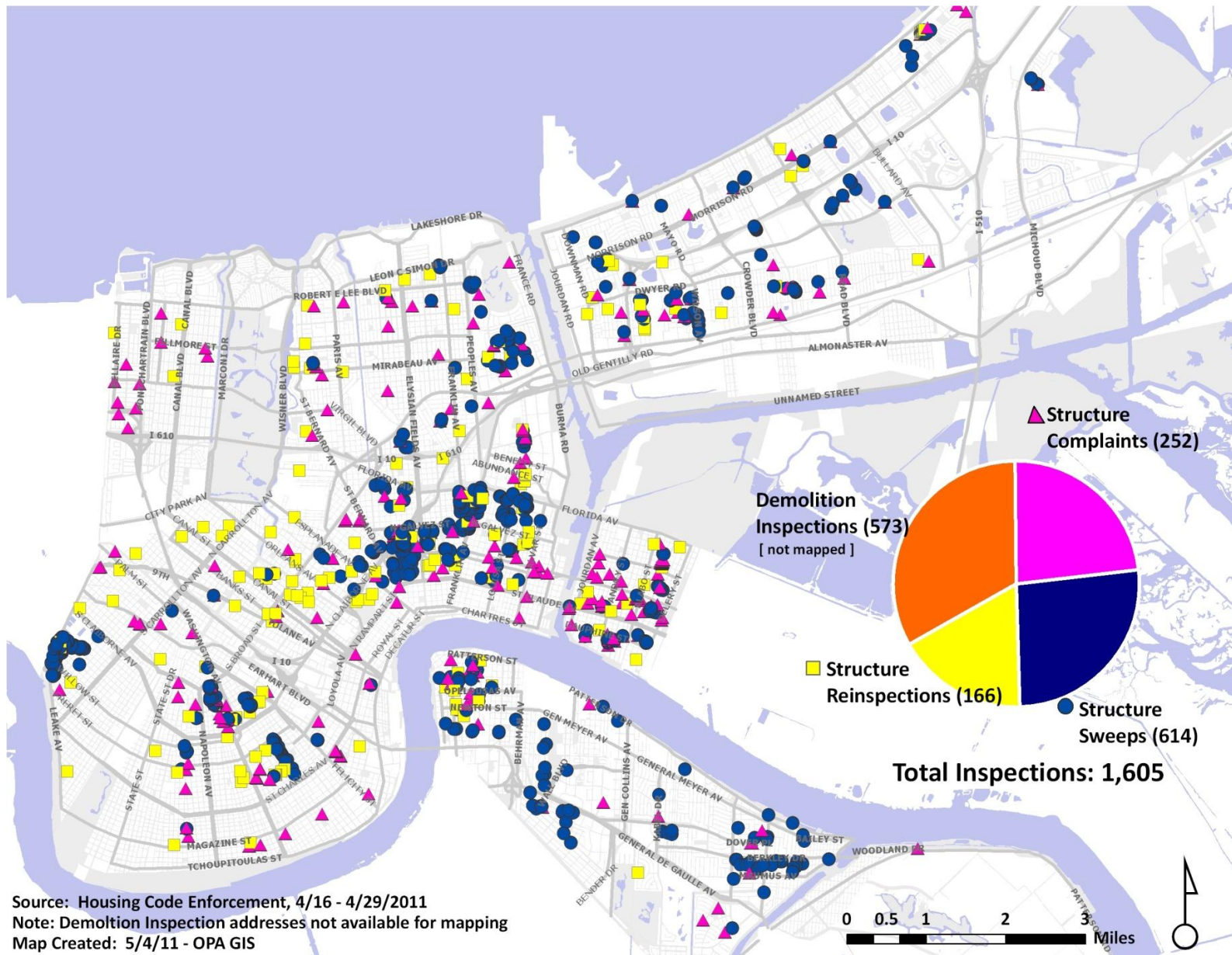
## INSPECTIONS



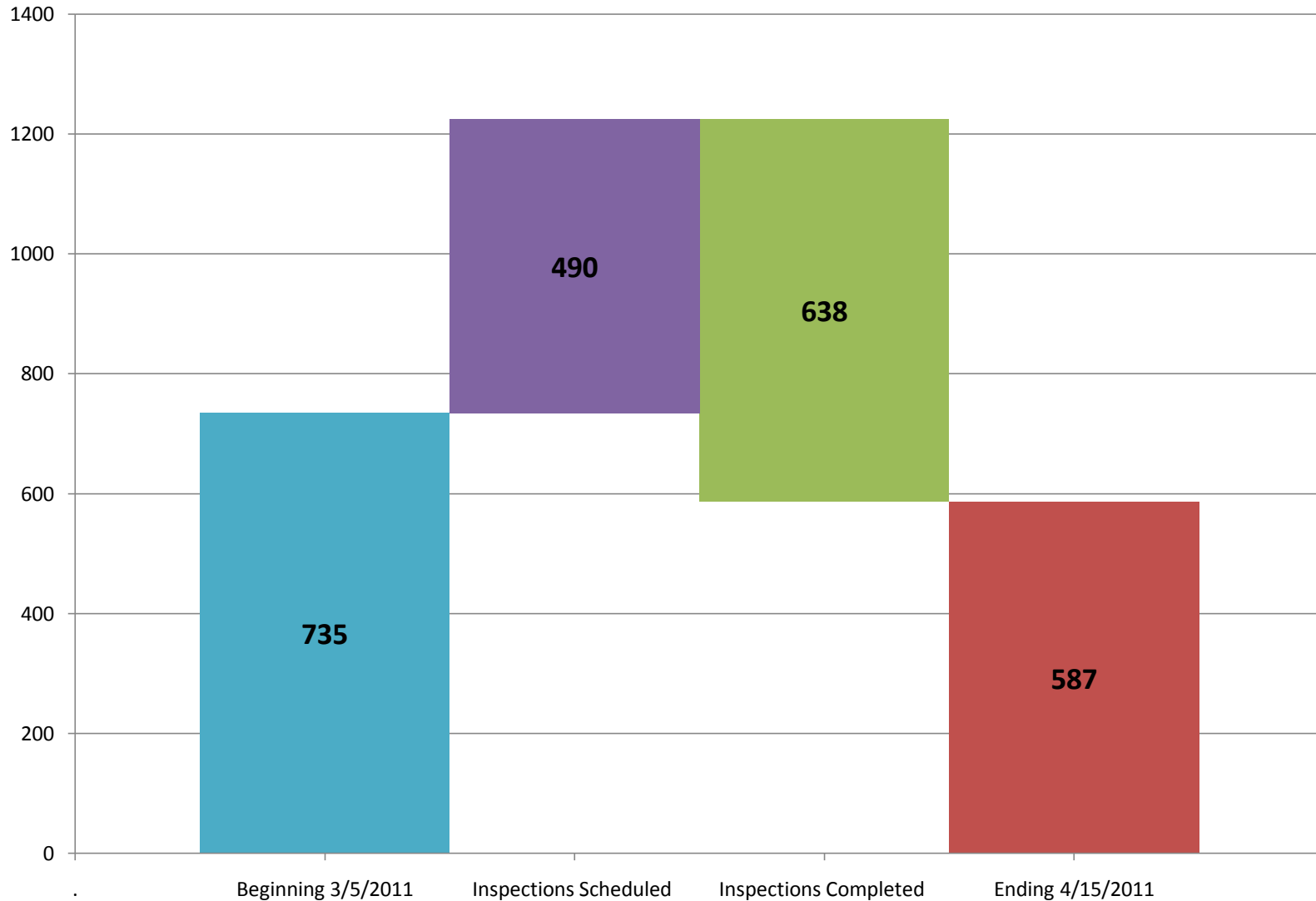
# Total Code Enforcement Inspections Exceed Target



# Code Enforcement Inspections by Type



# Reconciled Inspections Backlog Mar 5- Apr 15, 2011



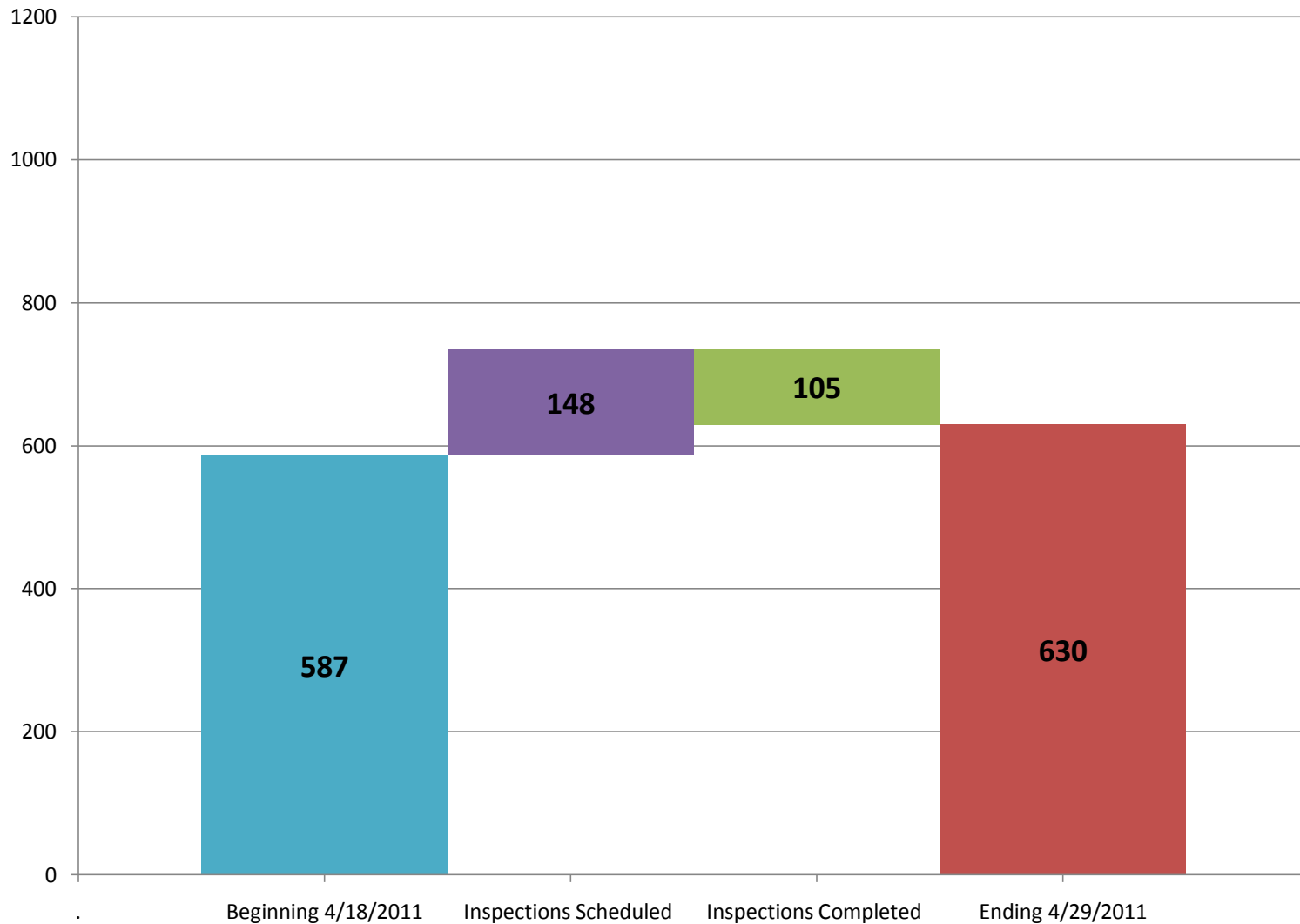
Note: Inspections backlog was re-calculated using the address-matching methodology for the past three reporting periods.

Source: OPA (Office of Performance and Accountability) May 3, 2011



Blight**STAT** May 5, 2011

## Inspections Backlog Apr 18-Apr 29, 2011



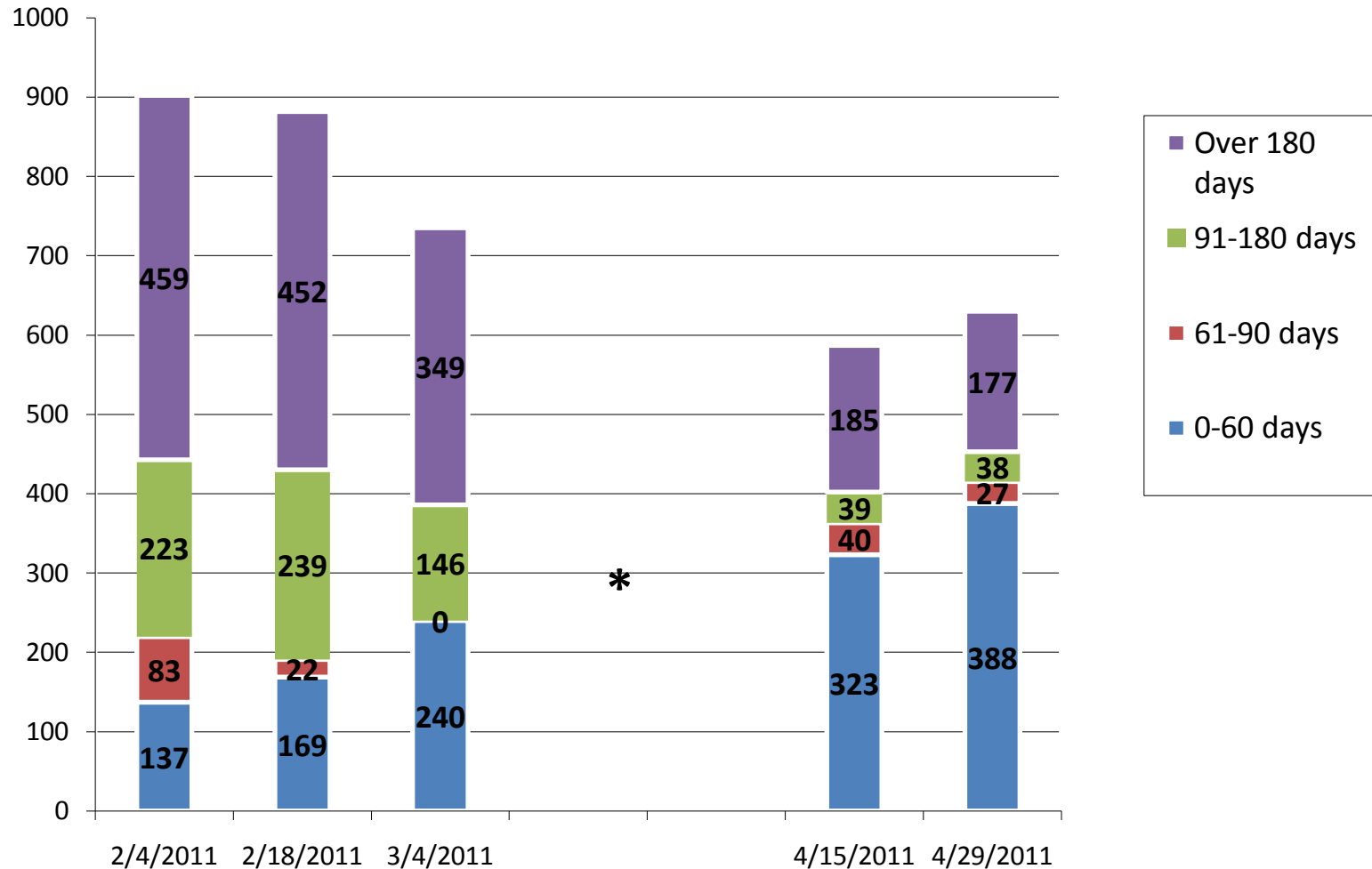
Note: Ending Backlog is equal to Beginning Backlog plus Inspections Scheduled minus Inspections Completed.

Source: OPA (Office of Performance and Accountability) May 3, 2011



Blight**STAT** May 5, 2011

# Aging of Inspections Backlog Apr 29, 2011



\*Note: Inspections backlog was re-calculated using the address-matching methodology for the past three reporting periods.  
 Source: OPA (Office of Performance and Accountability) May 3, 2011

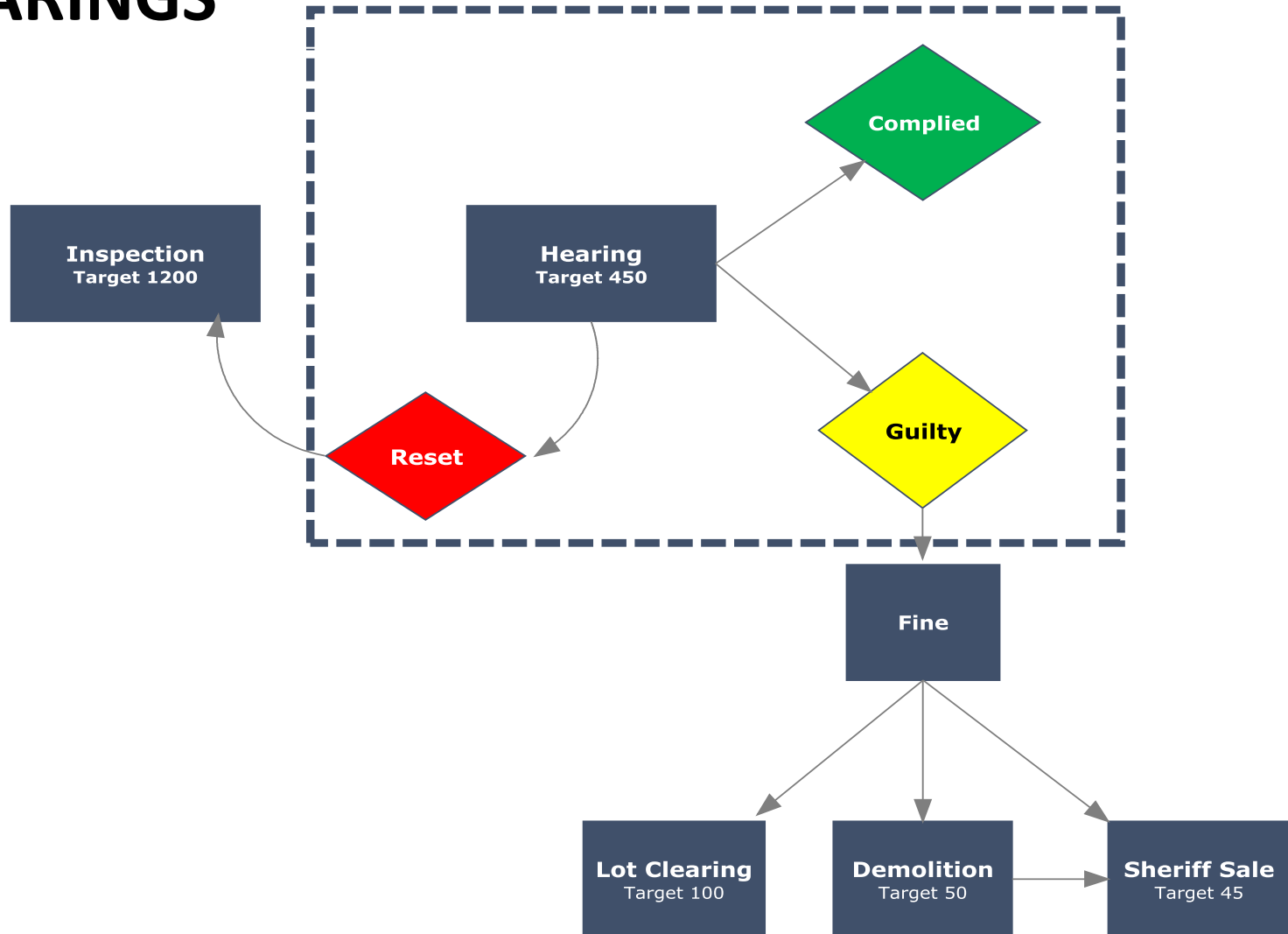


Blight**STAT** May 5, 2011

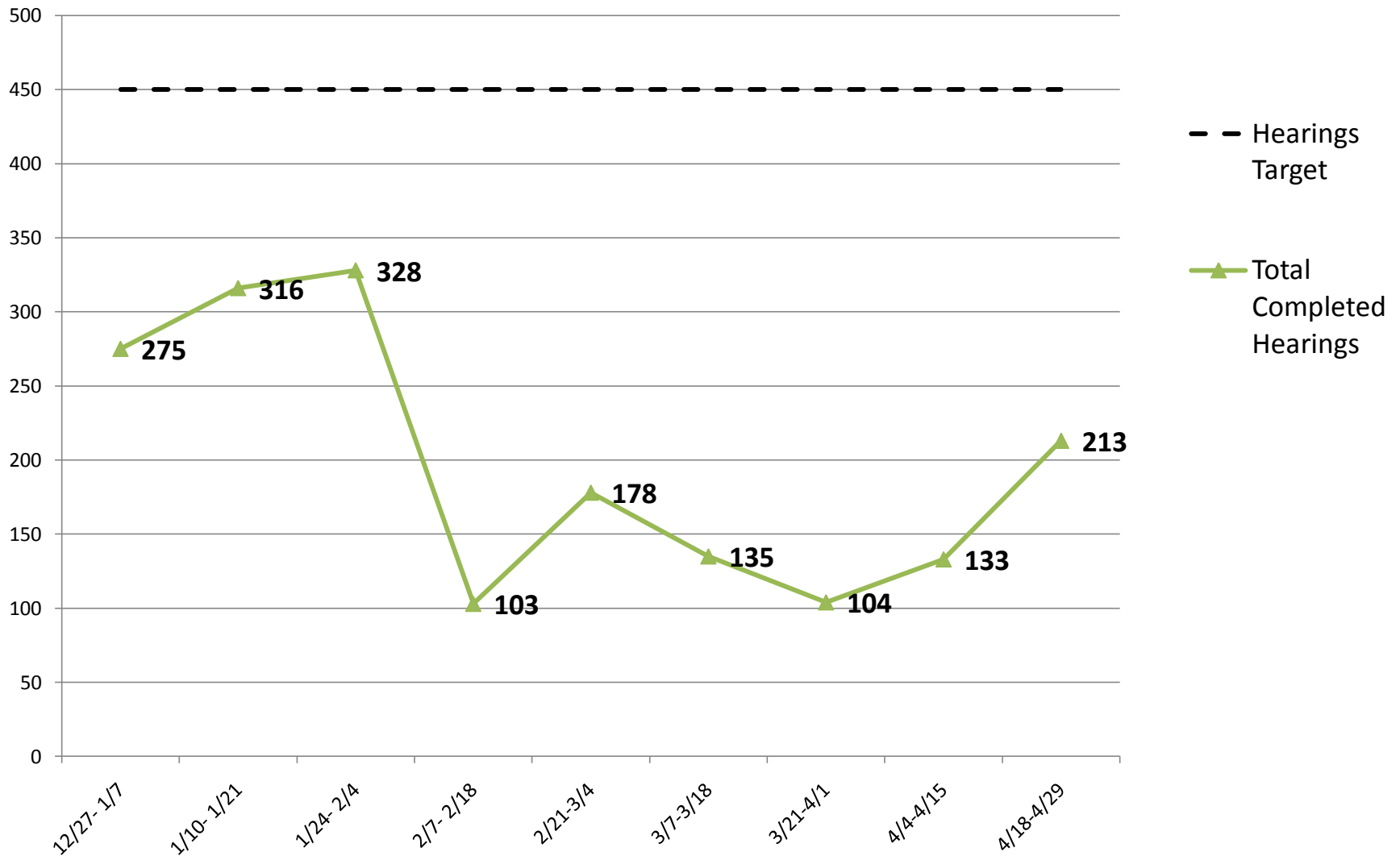


## Code Enforcement Process Map

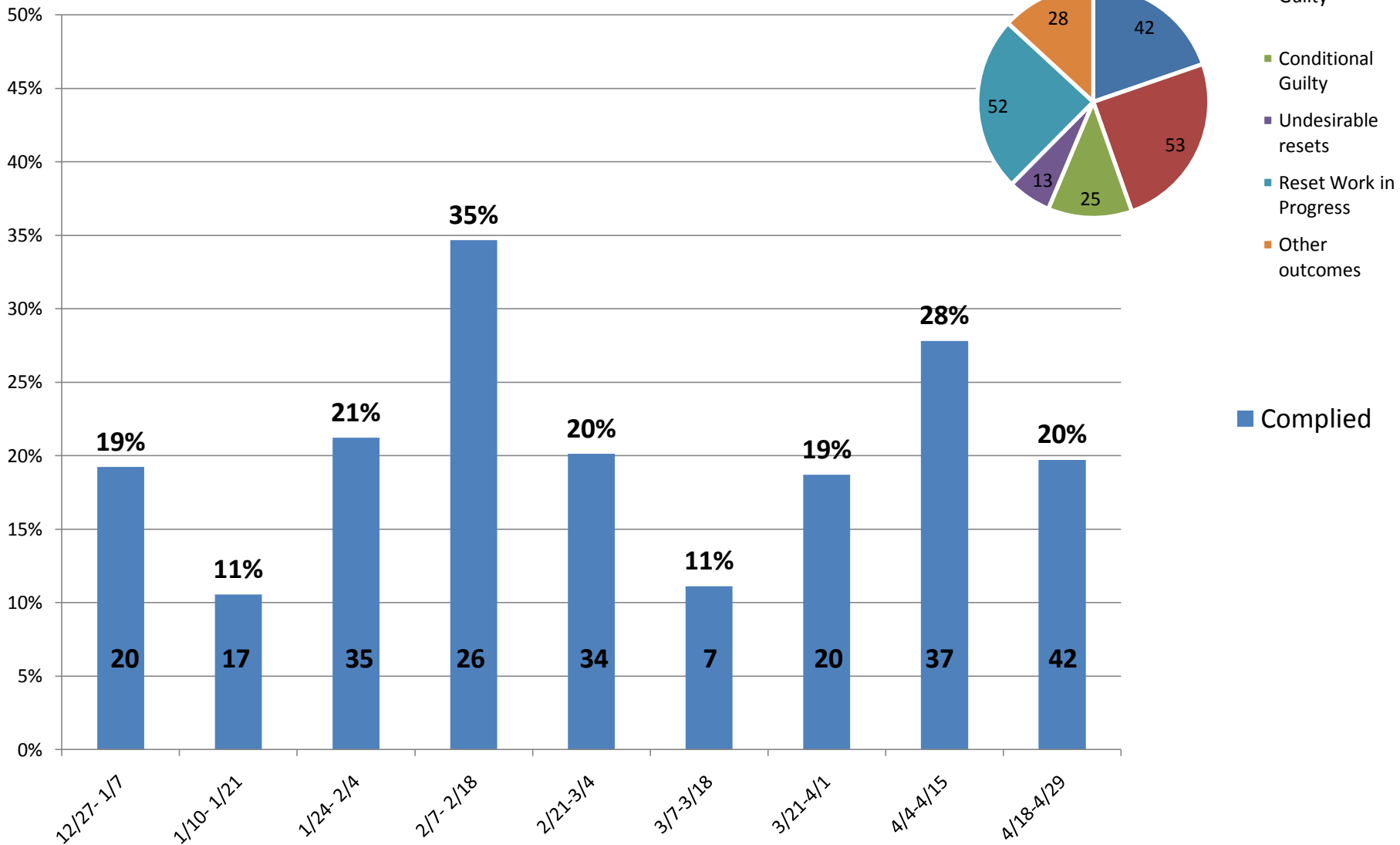
# HEARINGS



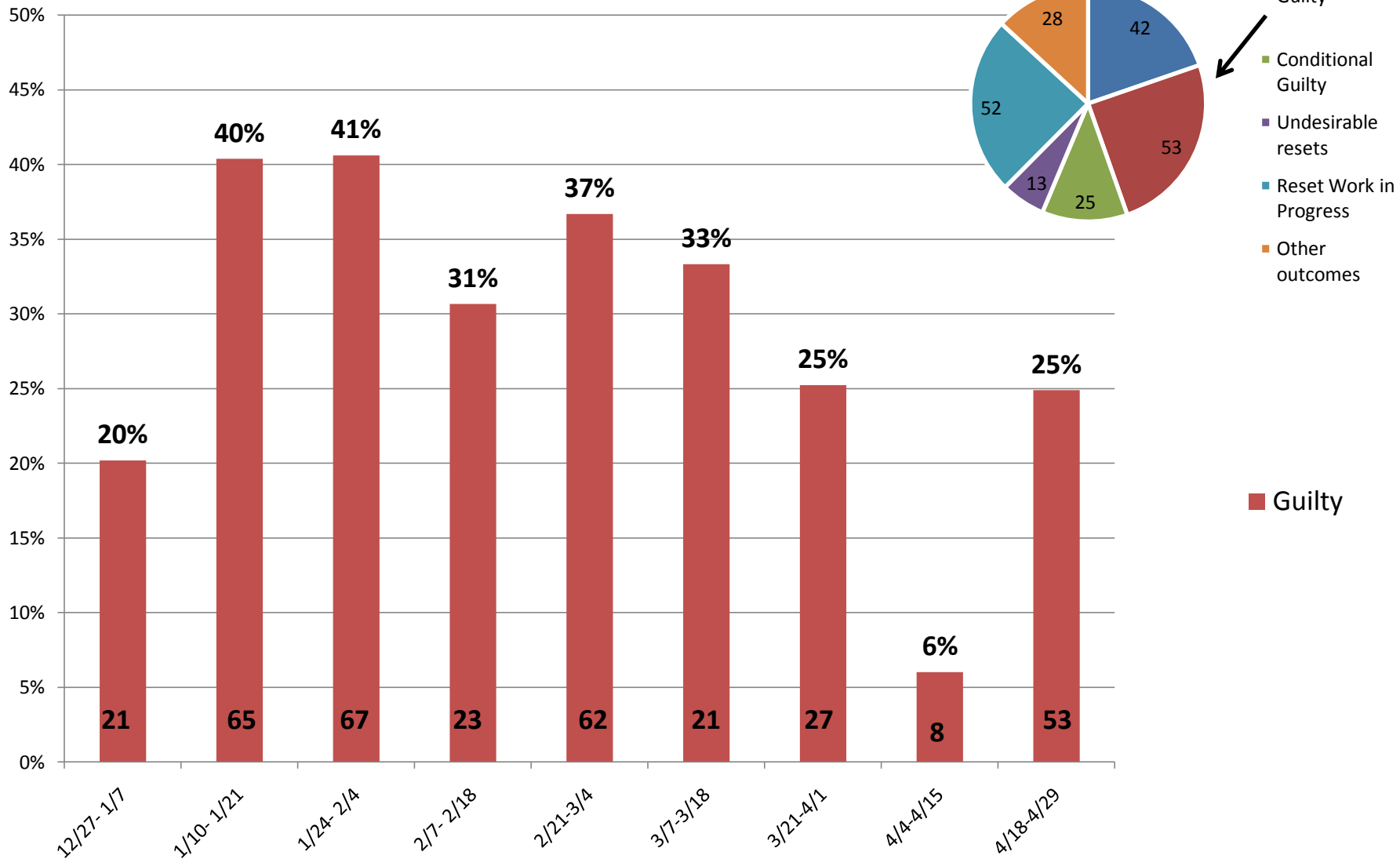
## Total Hearings remain below Target



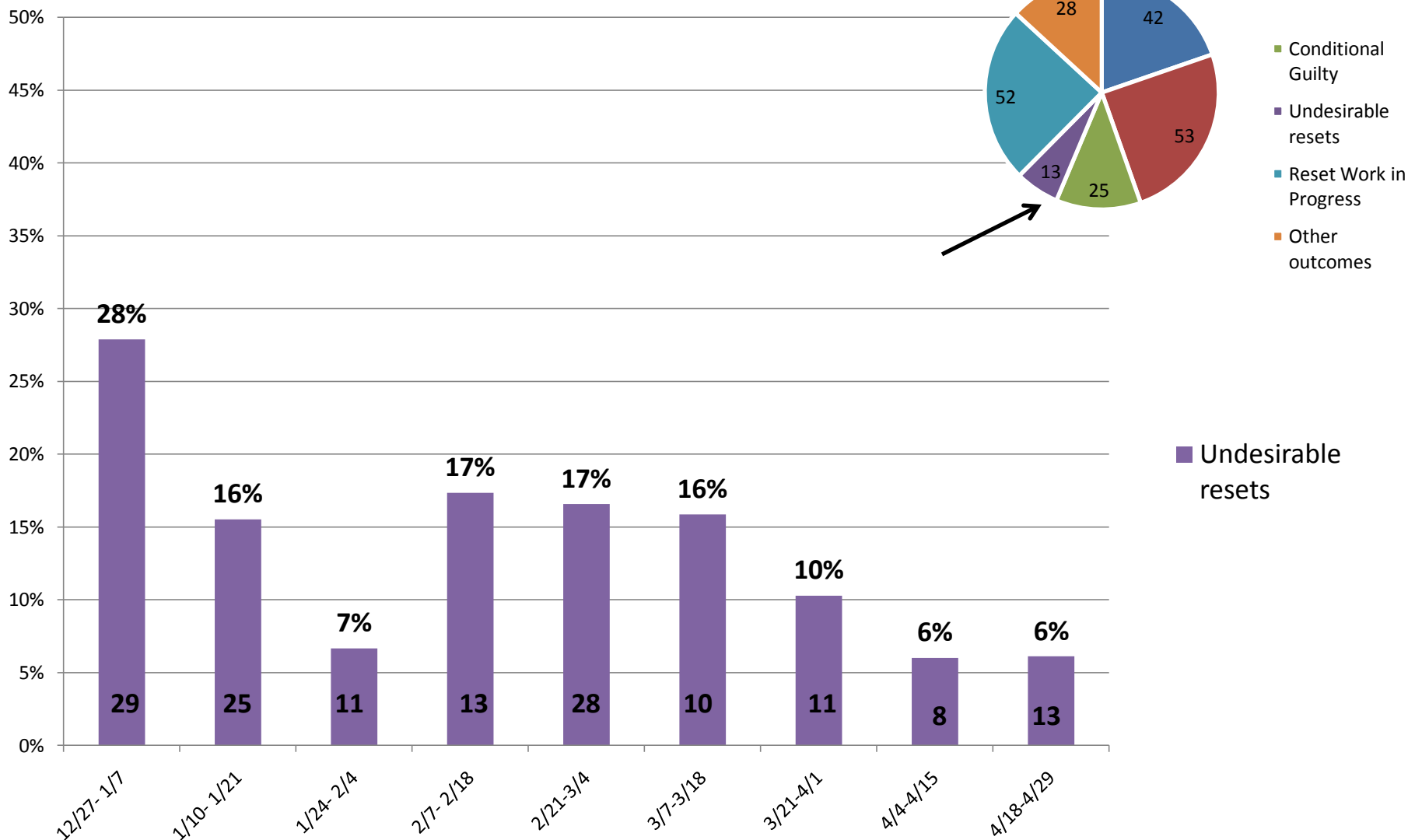
# Hearings Compliance



# Hearings Guilty



# Undesirable resets



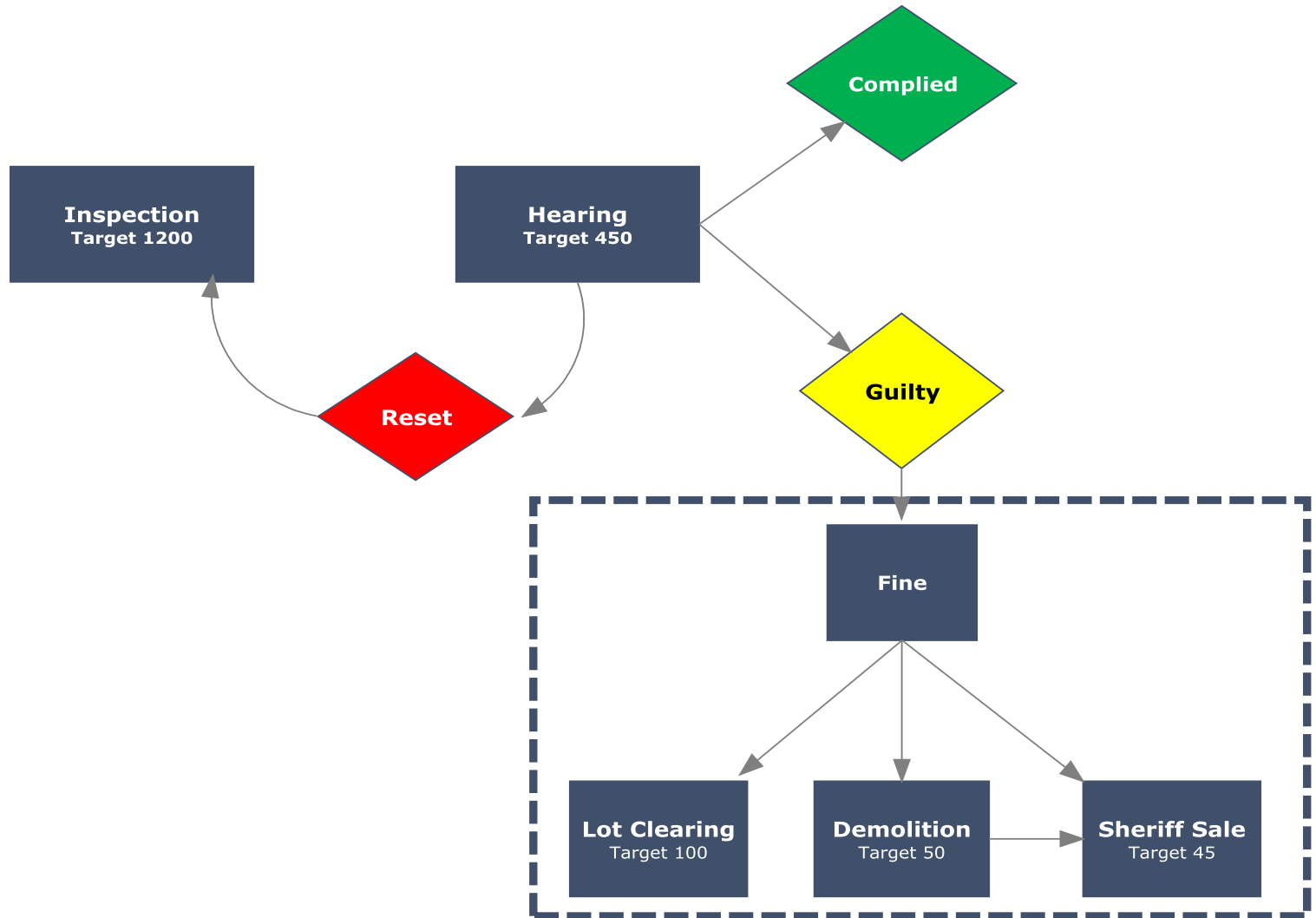
Note: Includes all resets with the exception of those made because of Work in Progress to the structure, the Property Owner is in a State-Run Housing Rehabilitation Program, or there is a legal issue requiring a reset.

Source: Code Enforcement May 2, 2011

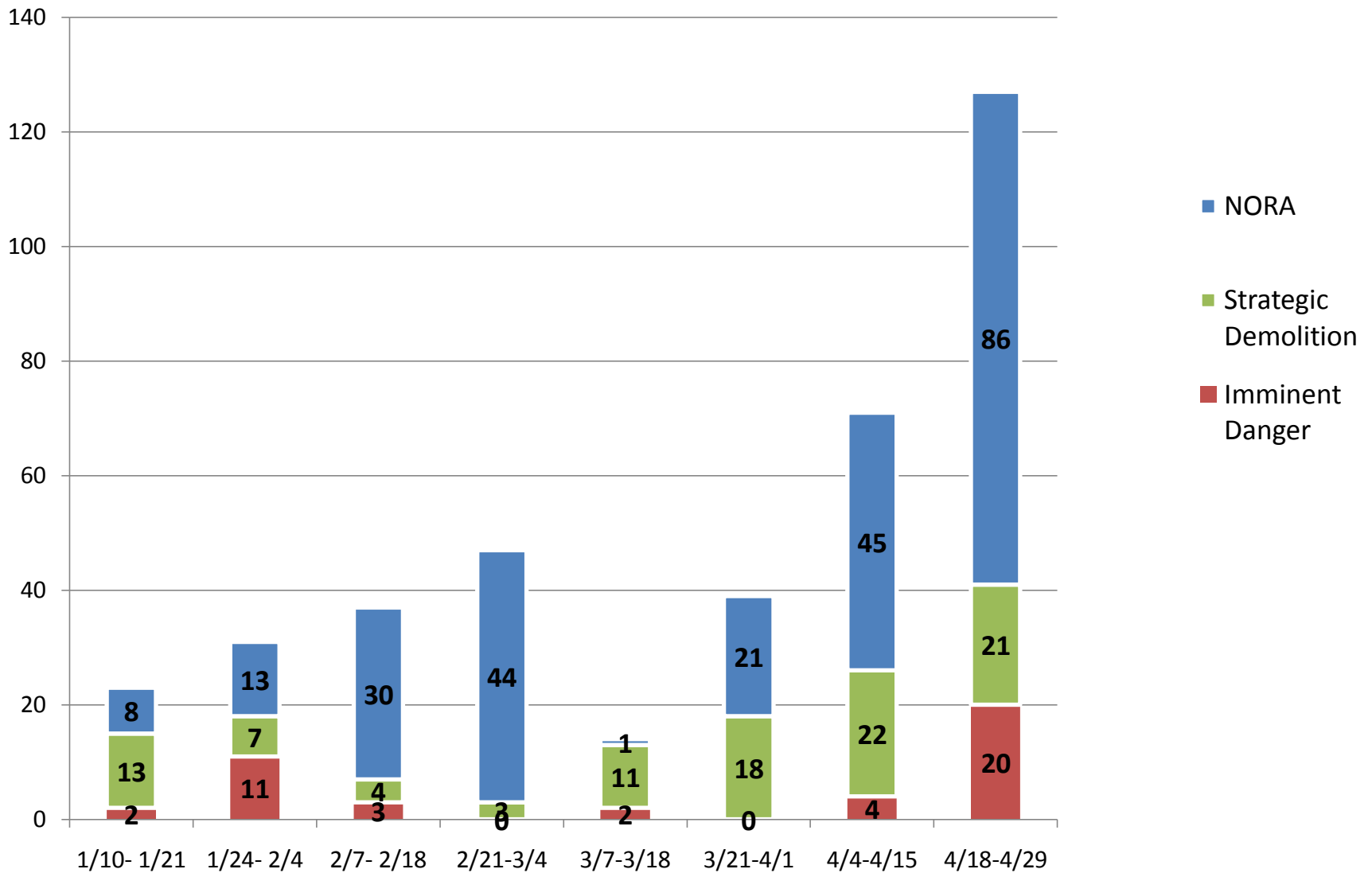


## Code Enforcement Process Map

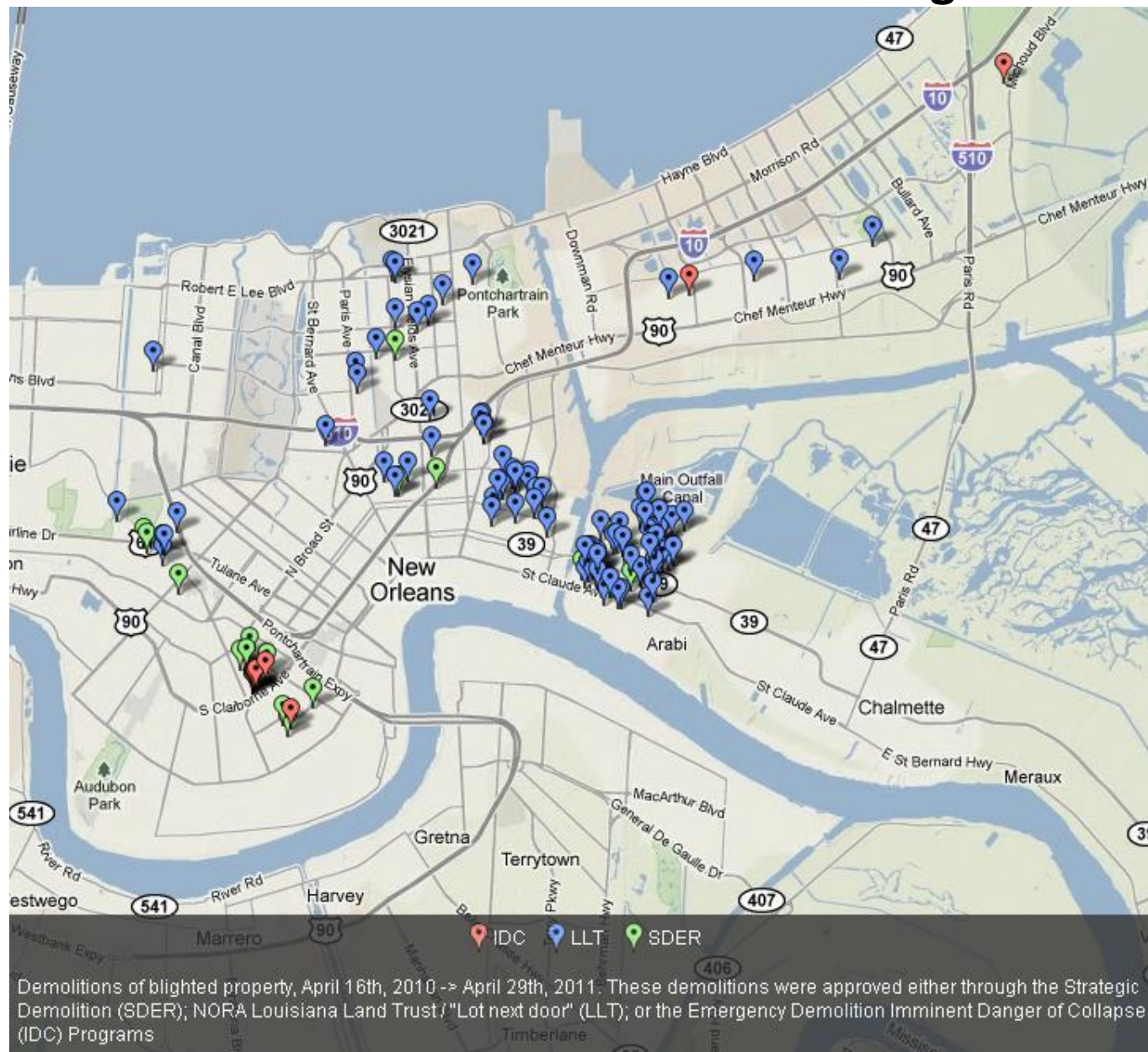
# ABATEMENT & DISPOSITION



# Total Demolition by Program



# Code Enforcement Demolitions Program



BlightSTAT May 5, 2011

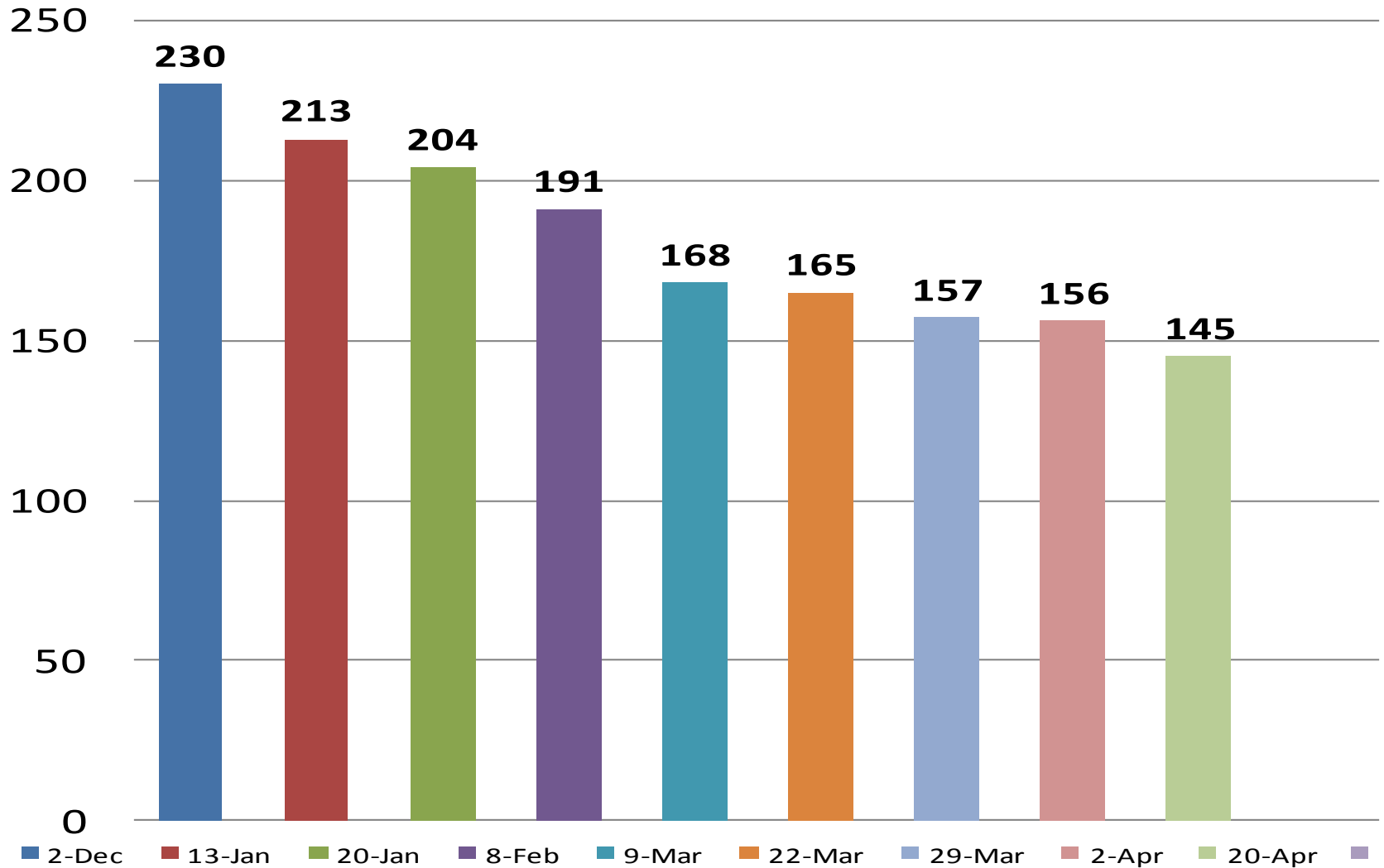


# Strategic Demo Program Status

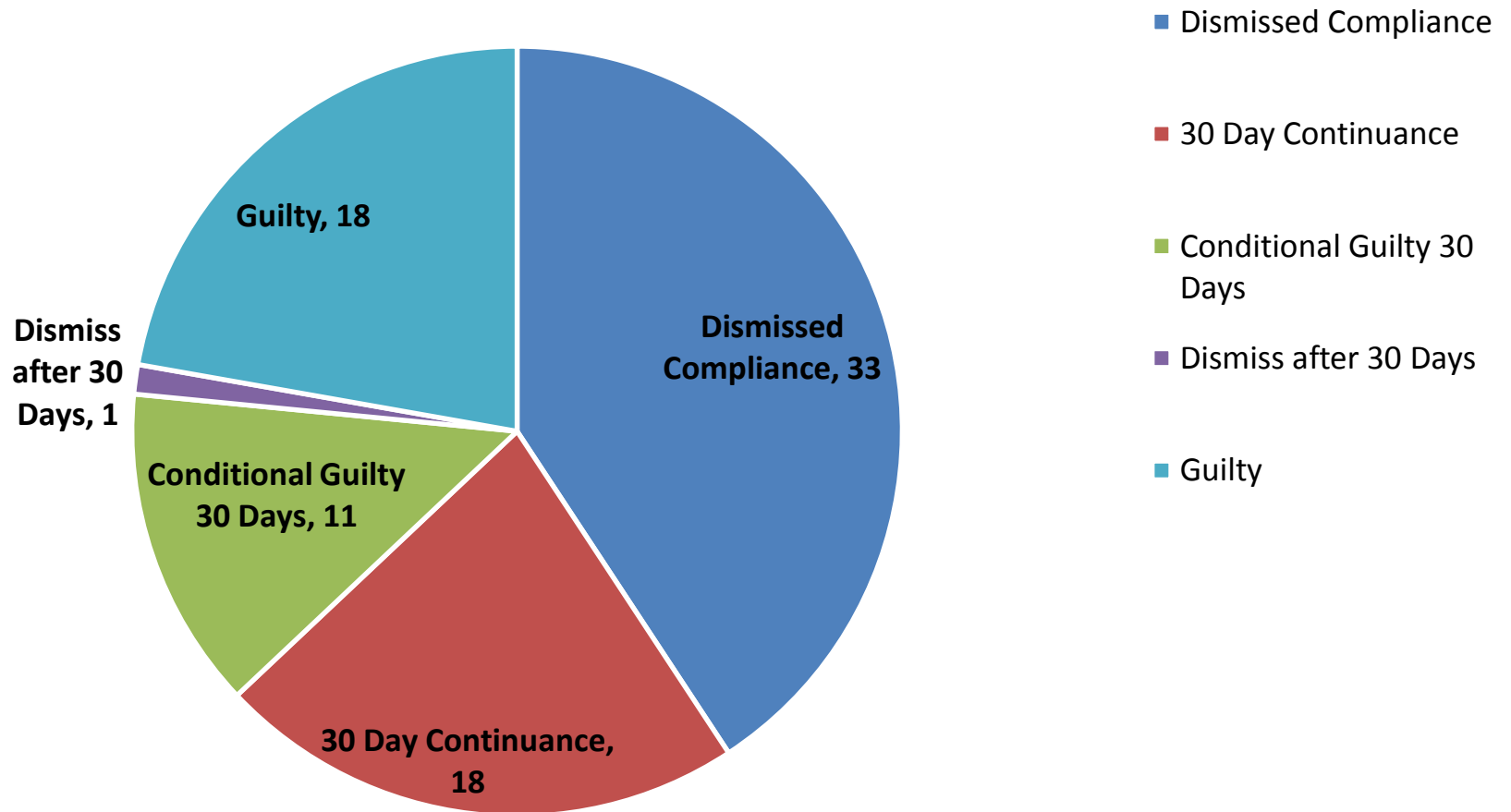
	4/16/2011	4/29/2011	Change
<b><i>Total Strategic Demo Judgments/Candidates</i></b>	<b>632</b>	<b>687</b>	<b>55</b>
<b><i>Historical Review</i></b>			
"Do Not Demolish" (Denied under Historical Review)	200	177	-23
Still under historical review (SHPO, NCDC, HDLC)	15	33	18
<b><i>Removal from Program</i></b>			
Change in Ownership	26	26	0
Converted to Imminent Danger of Collapse	14	14	0
Returned to Case Managers for Other Action	35	59	24
<b><i>In Progress</i></b>			
With City	109	162	53
With Contractor	9	1	-8
Waiting Utility Disconnect	18	0	-18
<b><i>Output</i></b>			
Demolitions Completed by Contractor (Properties)	139	160	21
Demolitions Completed by Owner	42	42	0
Properties Abated/Renovated by Owner	25	27	2
Demolitions Completed in Units	547	576	29



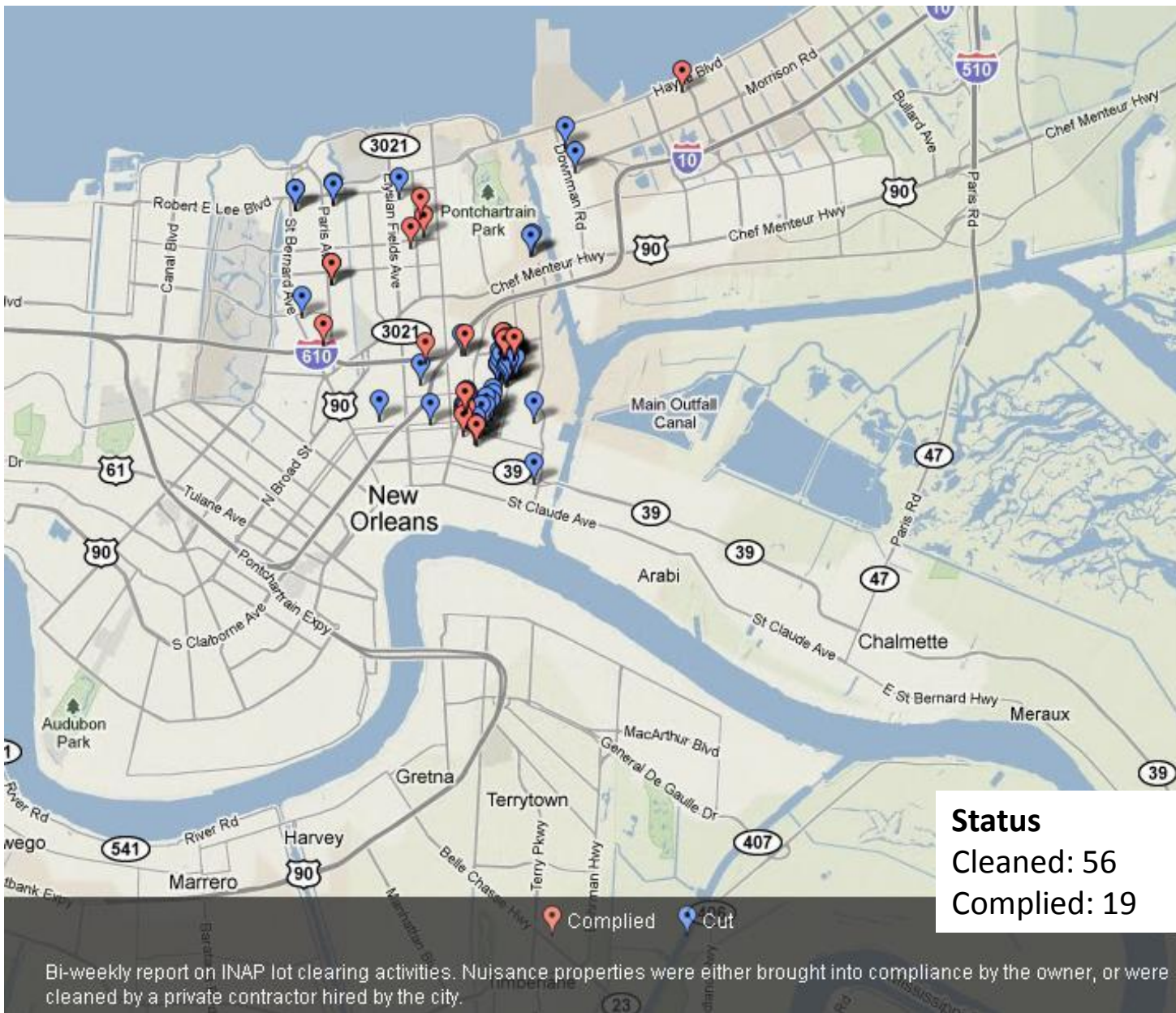
# FEMA Trailers Remaining



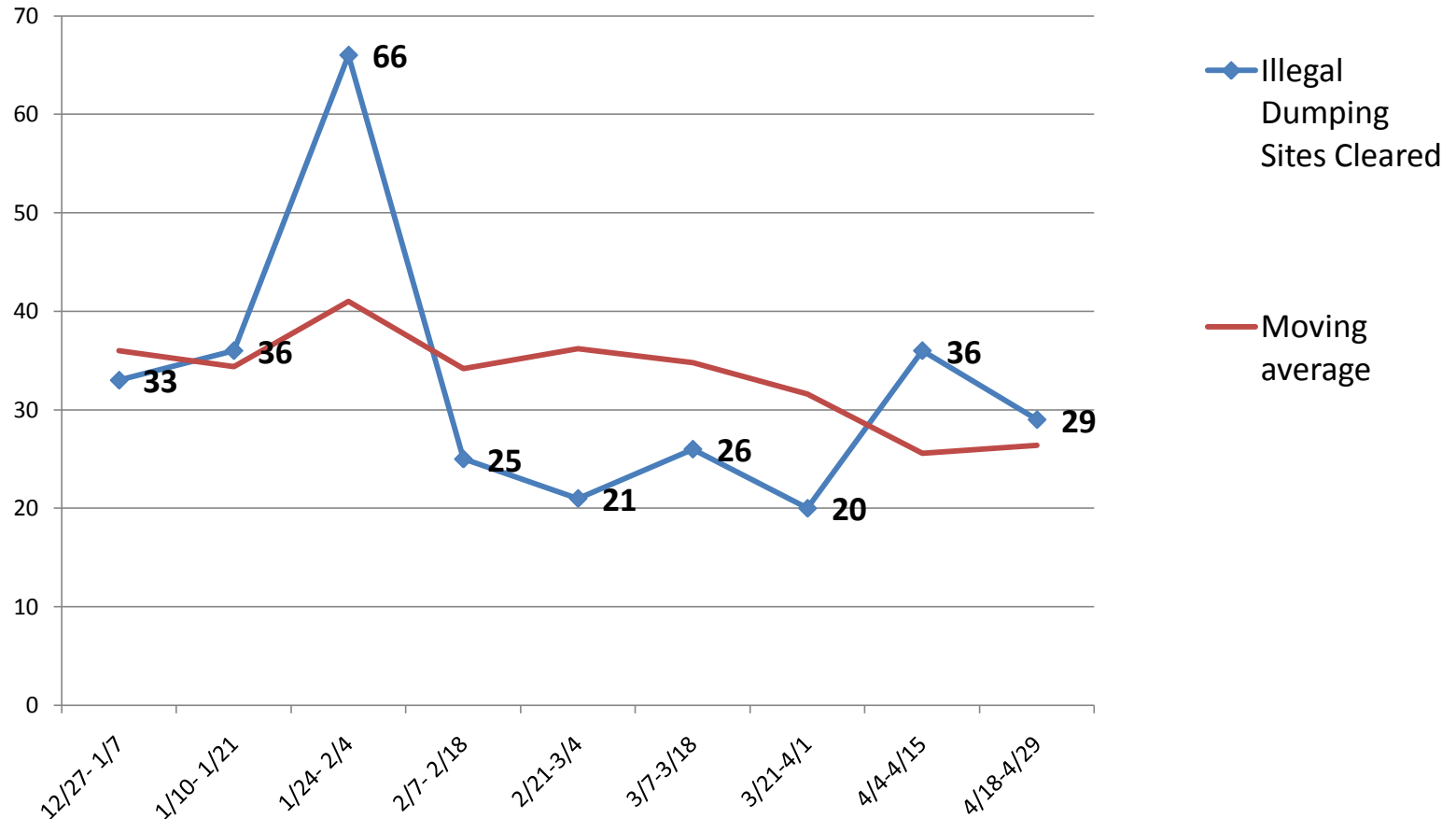
# FEMA Adjudication Disposition of 81 Cases as of Apr 25, 2011



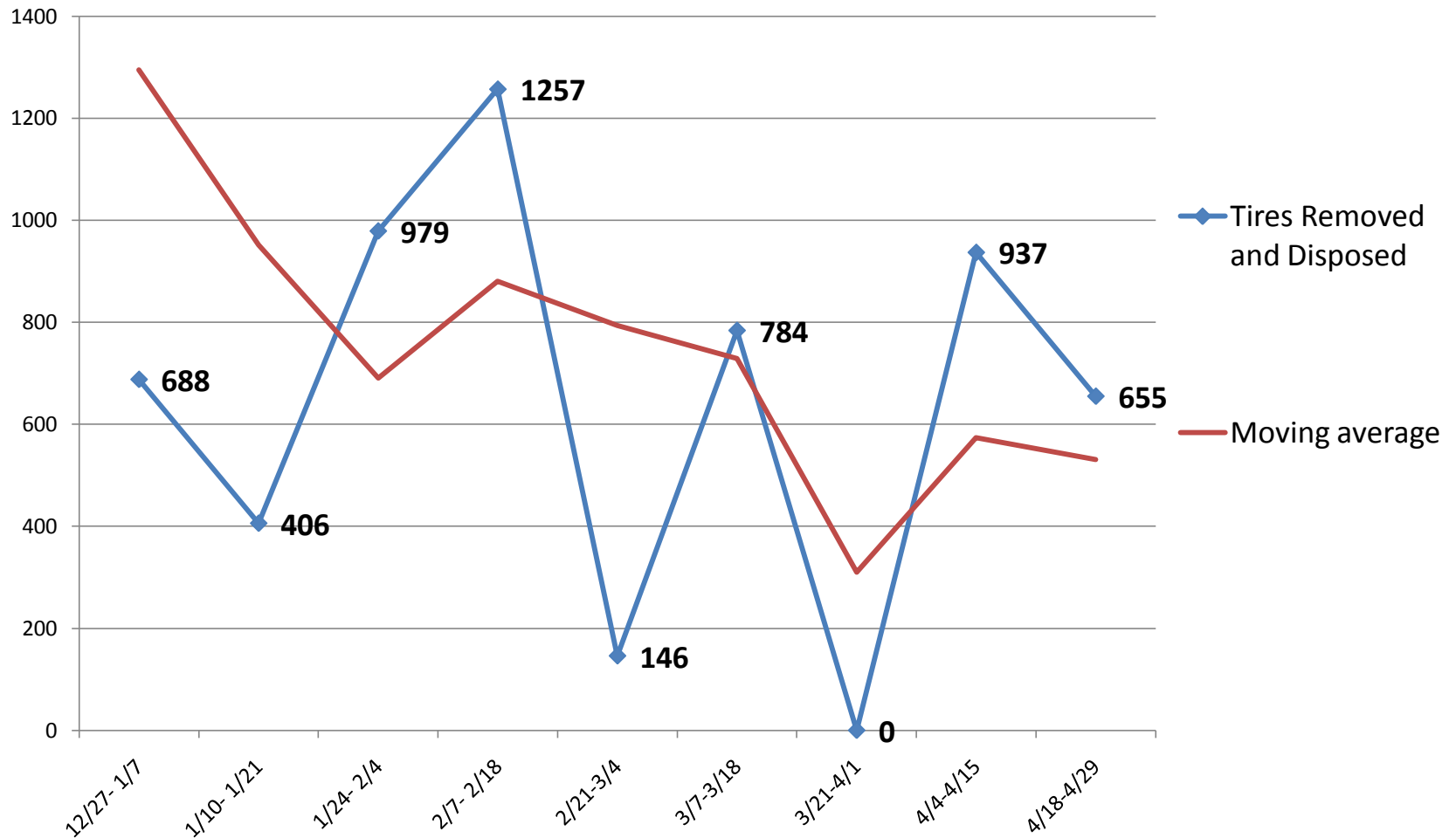
# Total Lot Clearings, Apr 18- Apr 29, 2011



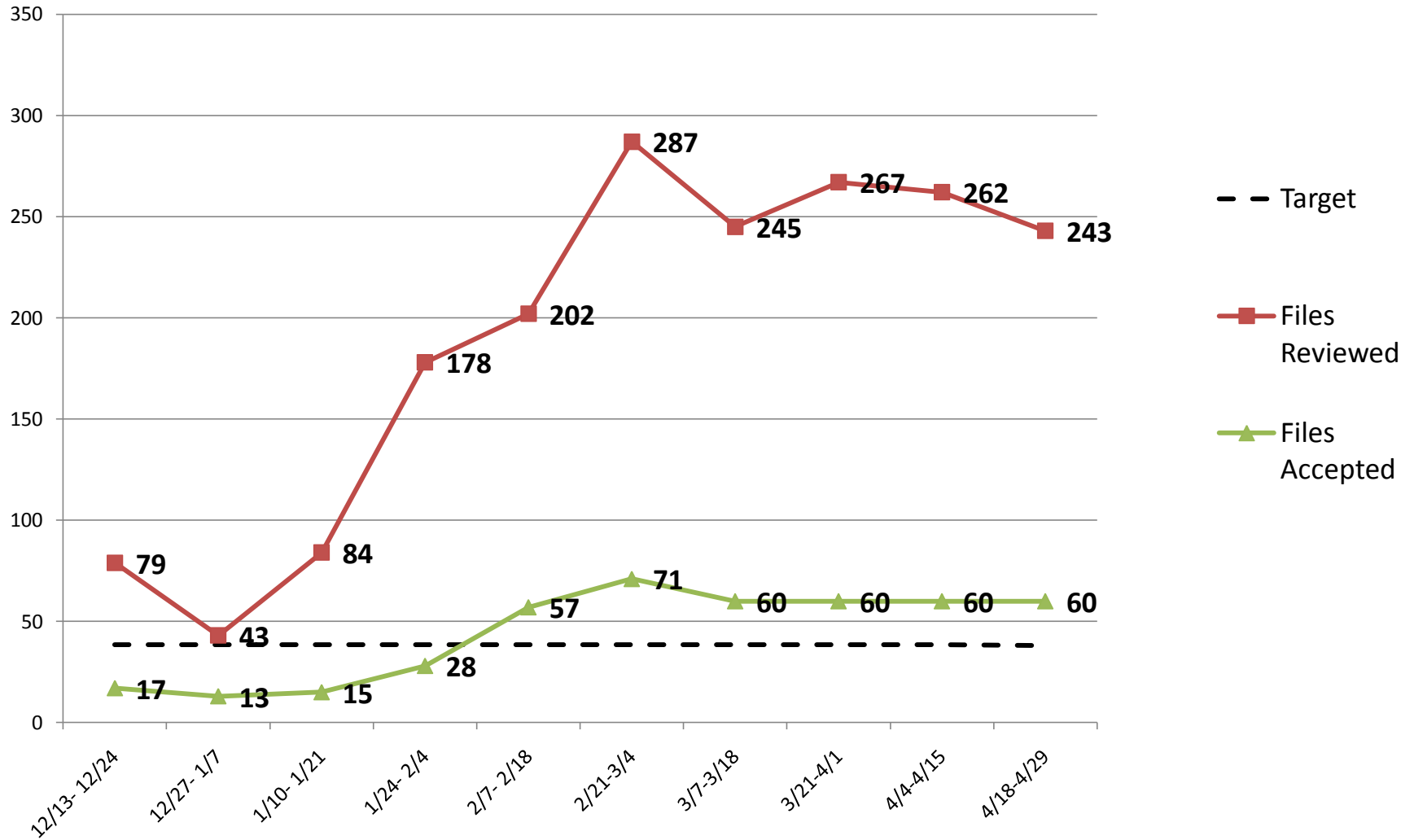
# Trend of Illegal Dumping Sites Cleared



# Trend of Tires Removed and Disposed

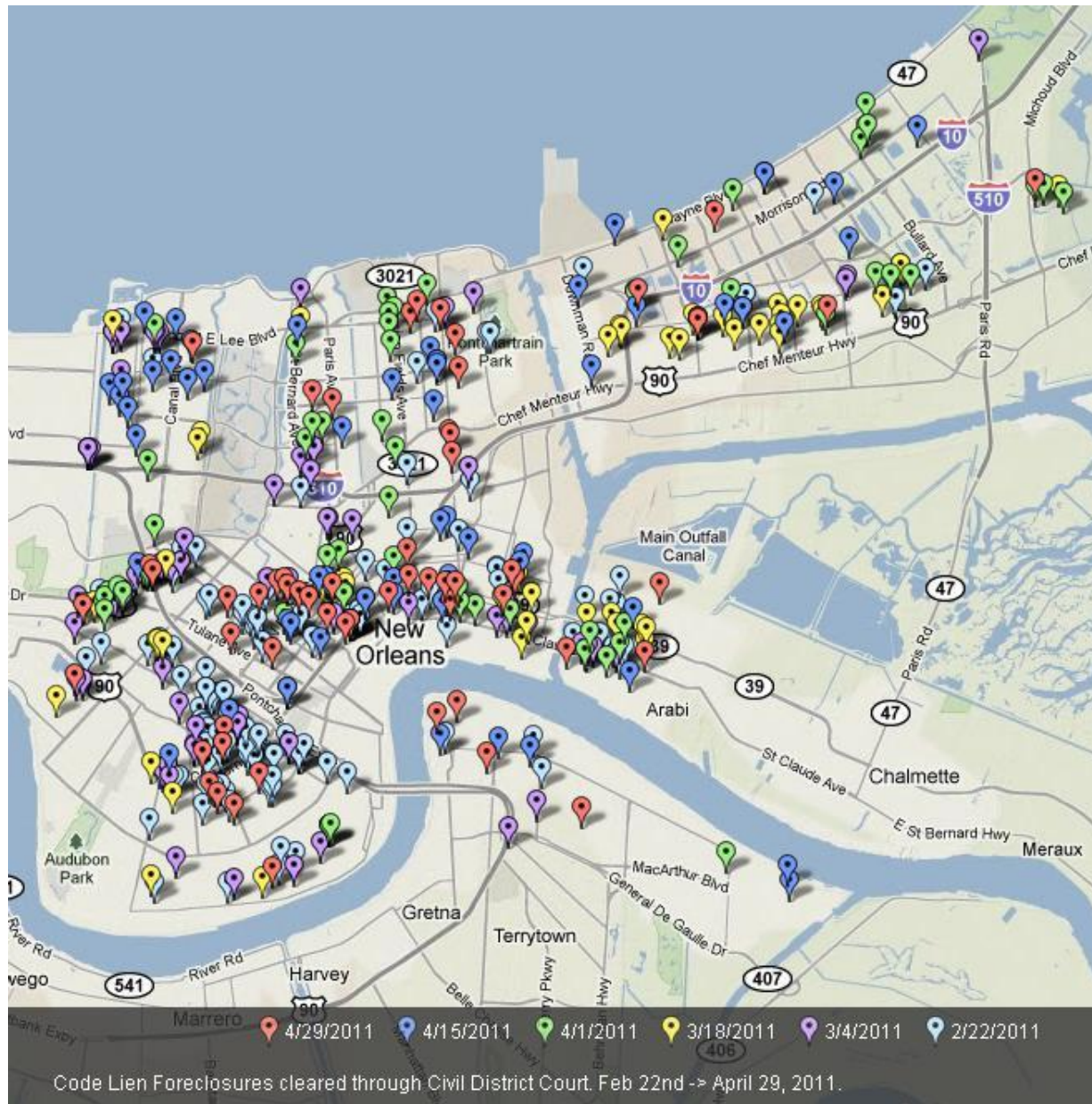


# Sheriff's Sales Files Reviewed and Accepted





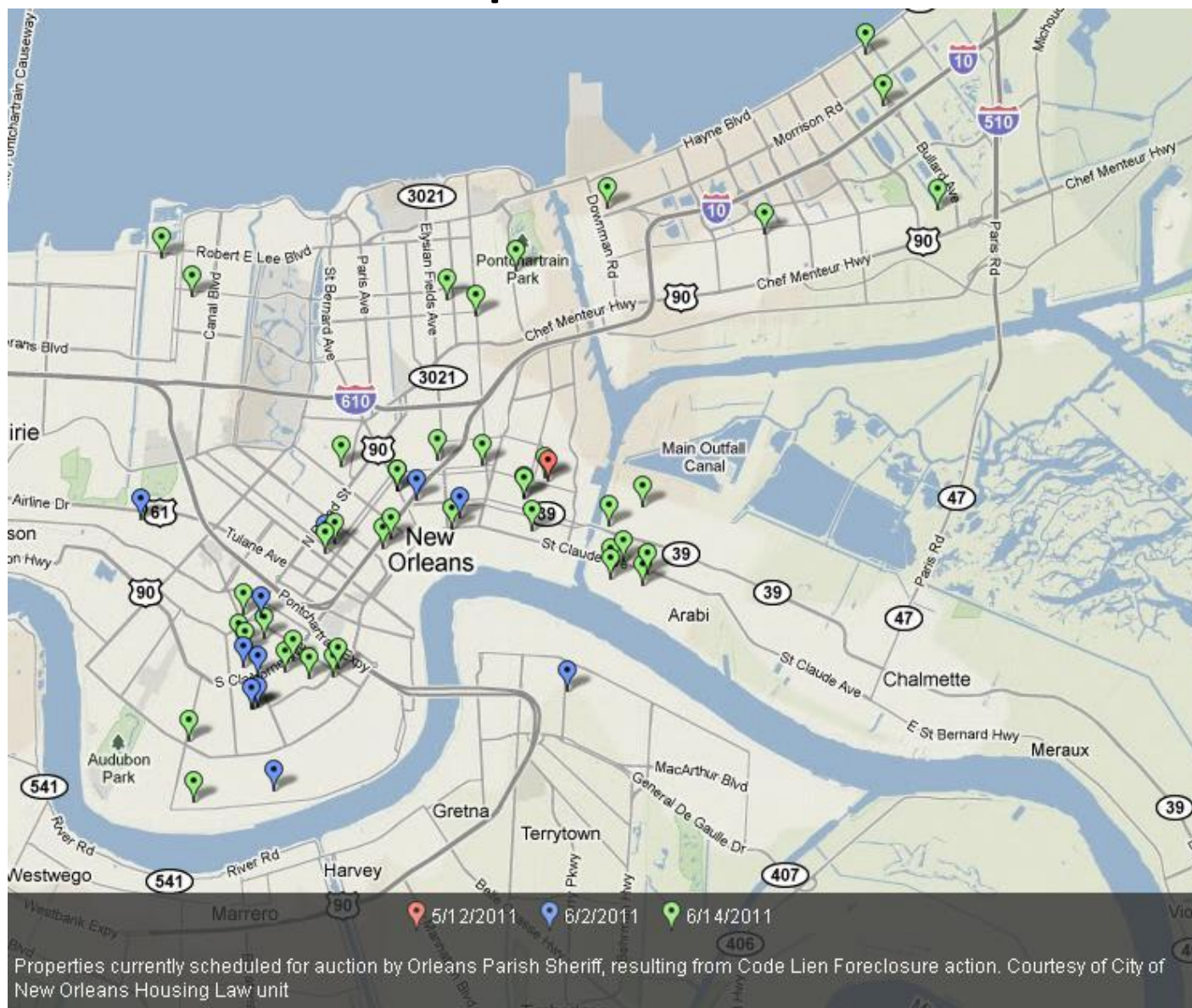
# Code Lien Foreclosures



BlightSTAT May 5, 2011



# Sheriff's Sales Properties available for Auction



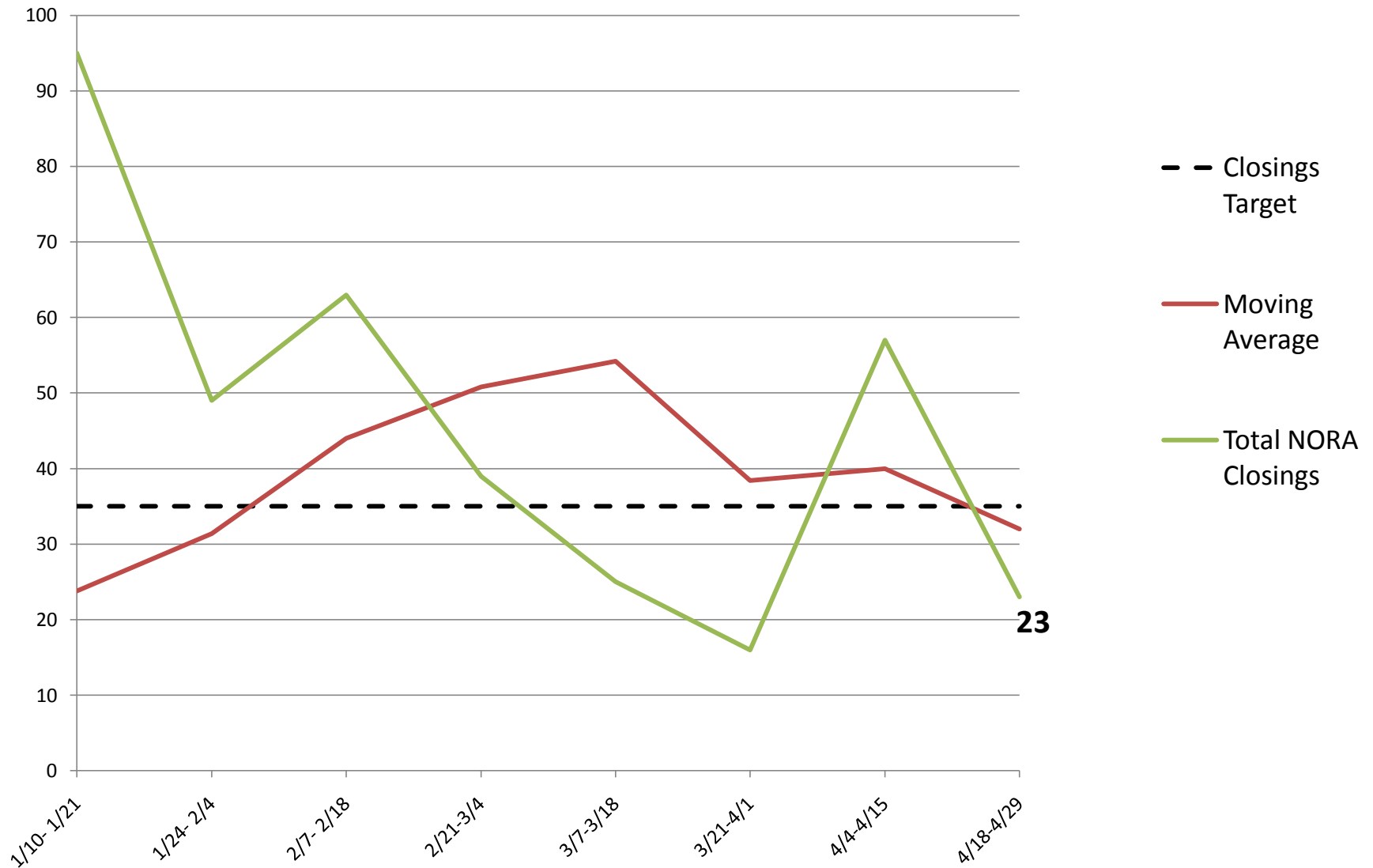
Note: There were no Sheriff's Sales within the reporting period.

Source: Law Department May 2, 2011

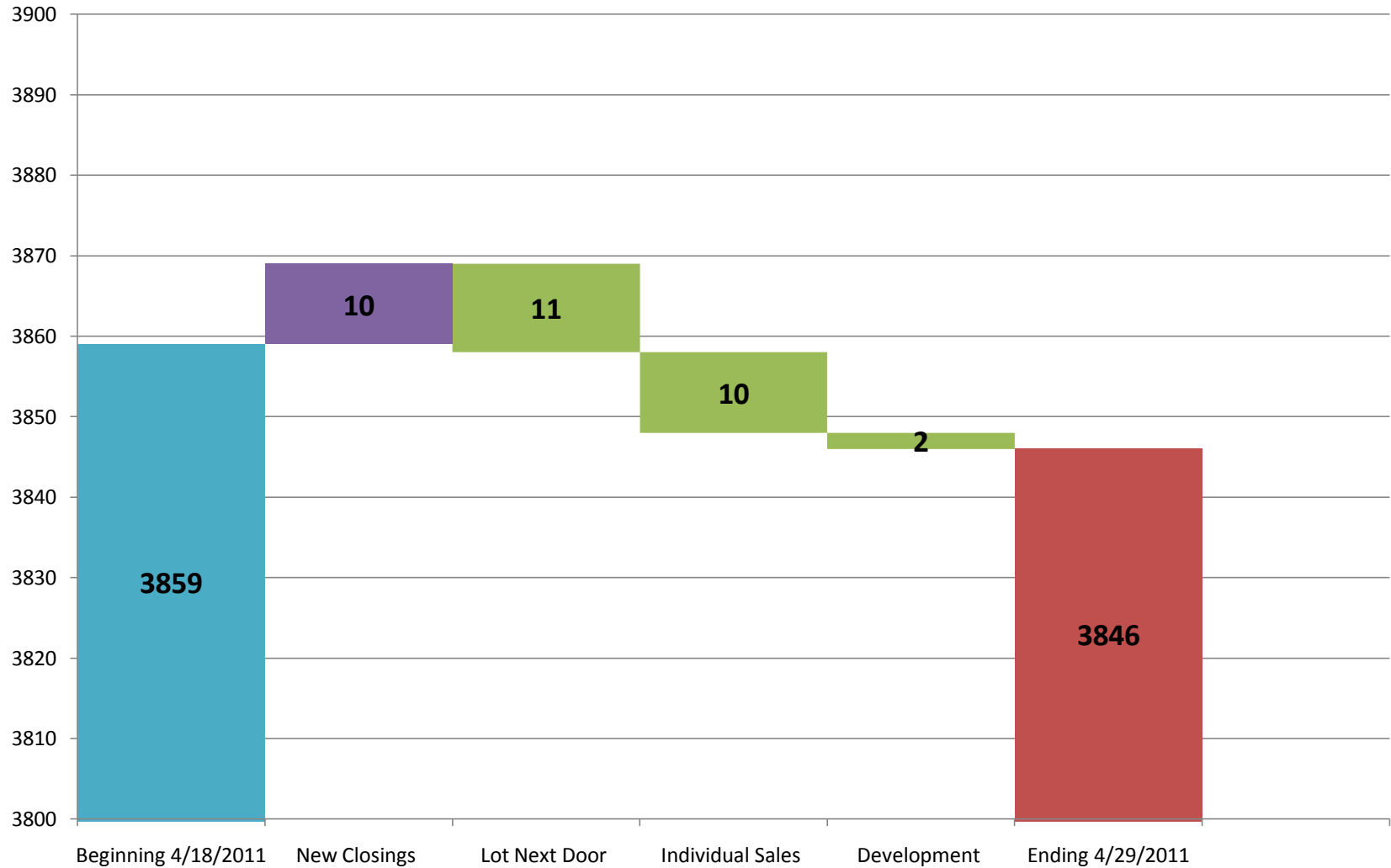


Blight**STAT** May 5, 2011

# NORA Total Closings below Target



# NORA Inventory Backlog Reductions



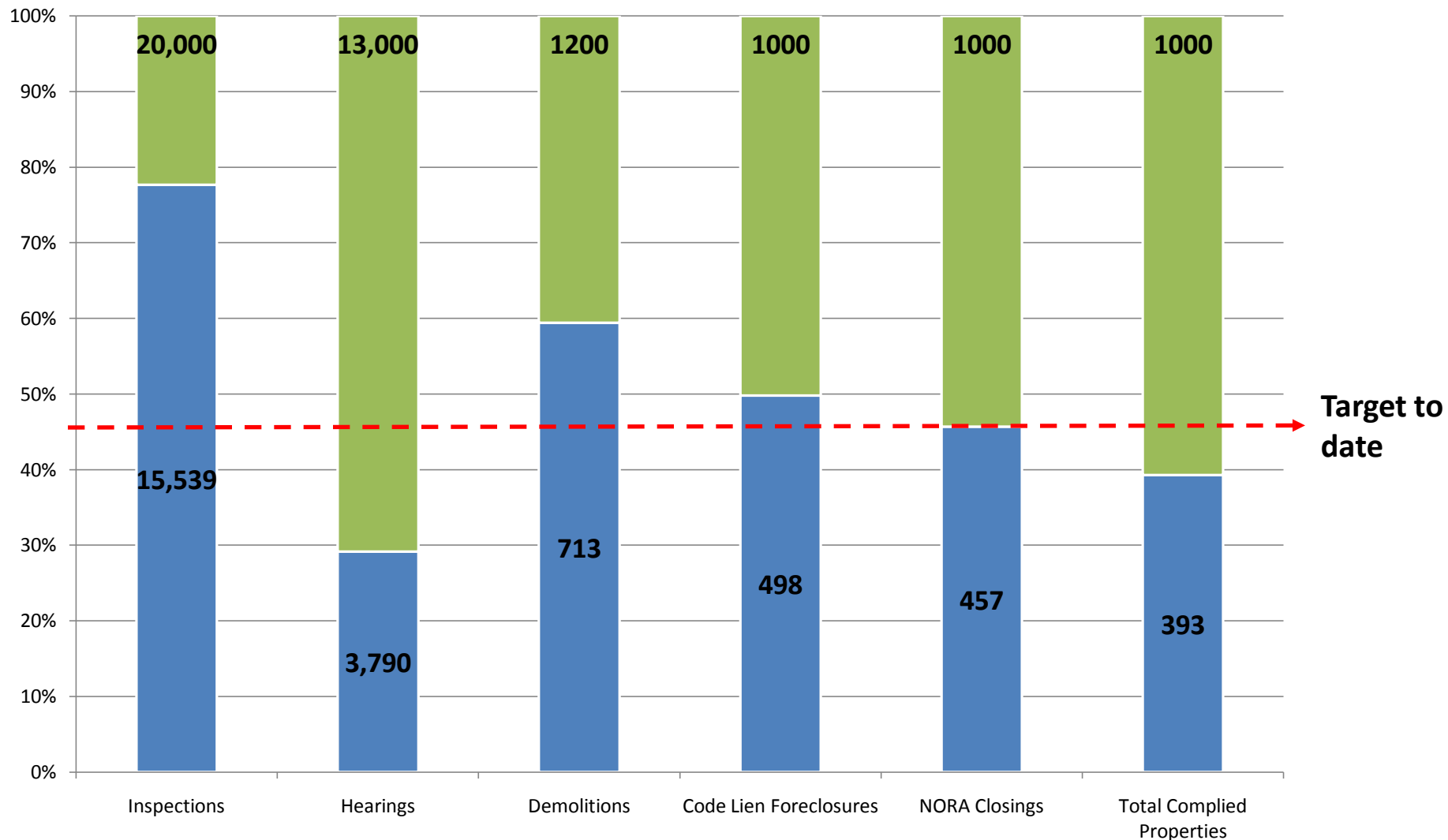
Note: Beginning Backlog minus Lot Next Door, Individual Sales, and Development equals Ending Backlog  
Source: NORA (New Orleans Redevelopment Authority) May 2, 2011



Blight**STAT** May 5, 2011

# Blight Program Performance

## Oct 2010- Apr 2011 vs End of Year 2011 Target



Source: Blight Strategy Report 9-30-2010  
Bi-Weekly Blight Stat Meetings 10-1-2010 through 5-5-2011



# Evaluation Form

Are you a city employee or a member of the public?

On a scale 1-5, how useful was this meeting to you (1= least useful and 5= most useful)?

What's working?

What's not working?

