



DILLARD

UNIVERSITY

Hazard Mitigation Grant Program Drainage Project

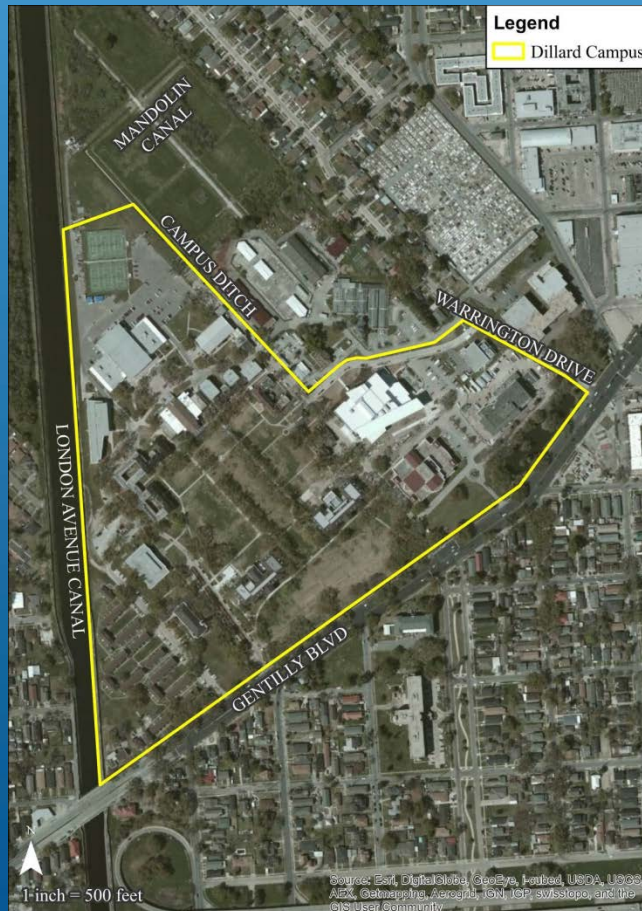
Project Overview

Presented by Chester Engineers, Inc.



Campus Drainage Analysis

Project Area



Inundation Map 10-year Storm Existing Conditions



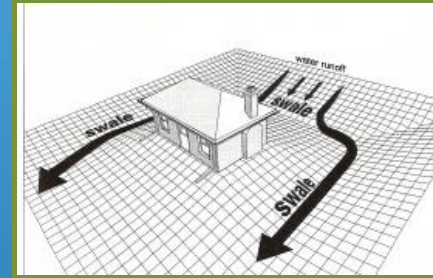
Stormwater Management Strategies

- Capture, Store and Convey Campus Stormwater Runoff
- Incorporate Low Impact Development (LID) where Practical
- Protect and Preserve Historic Assets
- Minimize Maintenance Costs
- Create No Downstream System Impacts



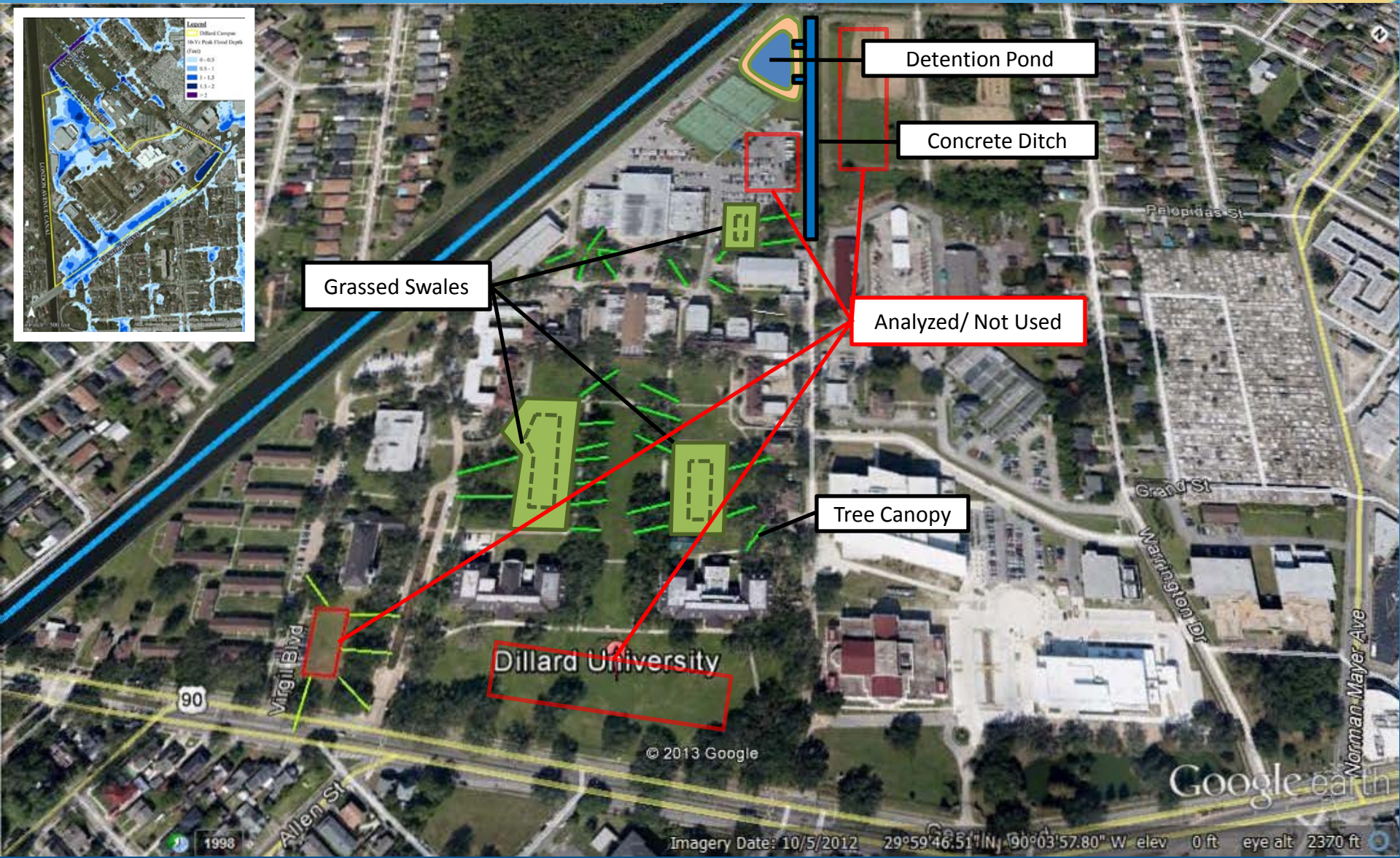
Stormwater Control Components

- Grassed Swales
- Stormwater Detention Pond
- Enhanced Use of Rear Campus Concrete Ditch
- Optimization of Subsurface Stormwater System



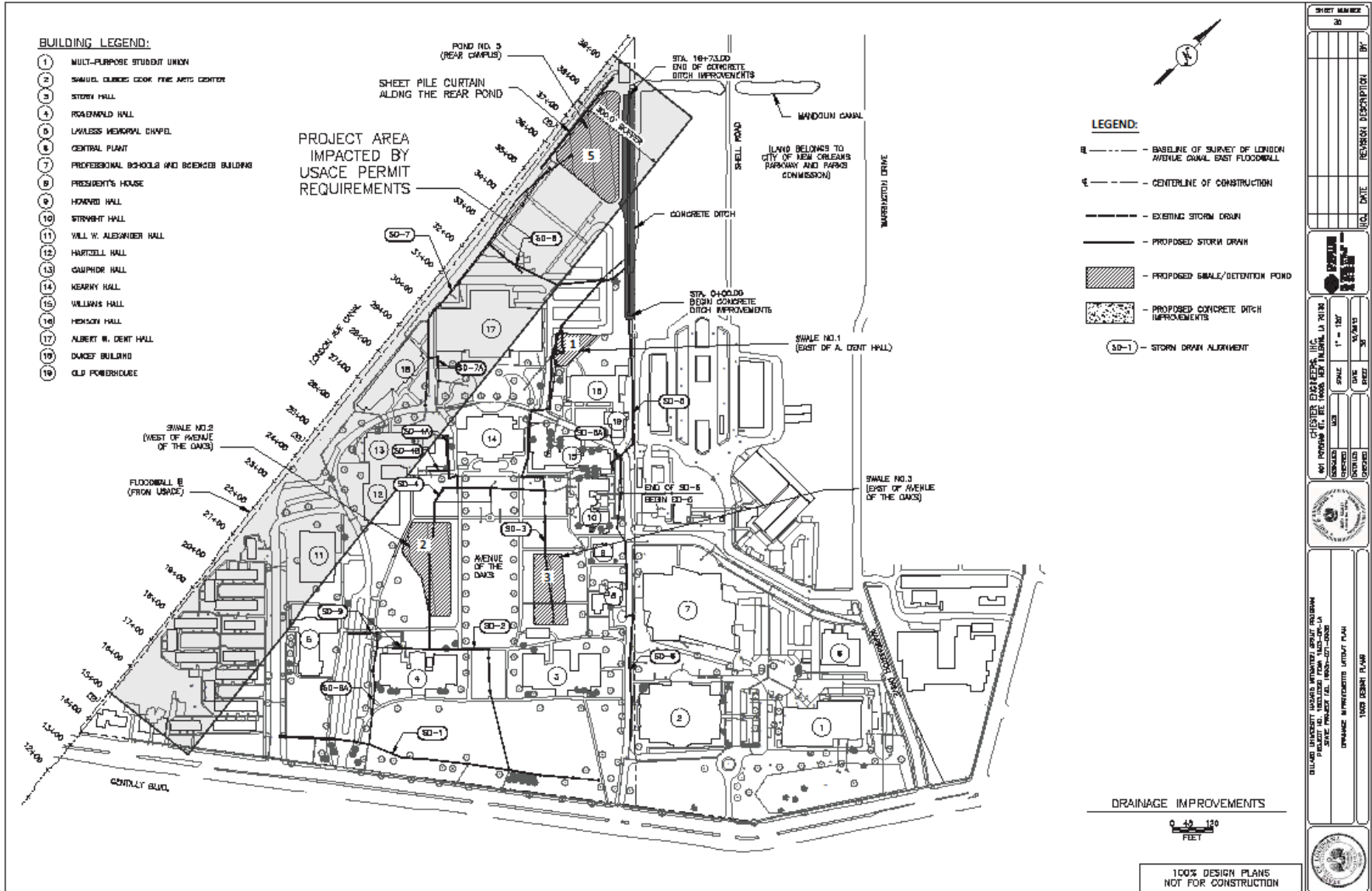


Stormwater Control Components





PROJECT NO. 1603.0320 FEMA 1603-DR-LA DILLARD UNIVERSITY





- | Dillard HMGP Stormwater Improvements | | | | |
|---|--|--|-------|-----------------|
| Opinion Of Probable Costs | | | | |
| | | | | |
| Item | | | | Item Budget |
| <u>Description of Improvement Location</u> | | | | |
| SD 1 - Lawless Memorial Chapel | | | | \$ 234,920.00 |
| SD 2 - Avenue of Oaks West | | | | \$ 345,210.00 |
| SD 3 - Avenue of Oaks East | | | | \$ 524,190.00 |
| SD 4 - Storm Drain Line | | | | \$ 147,410.00 |
| SD 4A - Storm Drain Line | | | | \$ 86,840.00 |
| SD 5 Storm Drain Line | | | | \$ 196,830.00 |
| SD6 Storm Drain Line | | | | \$ 249,985.00 |
| SD 7 Storm Drain Line | | | | \$ 297,345.00 |
| SD 8 Storm Drain Line | | | | \$ 137,750.00 |
| SD 9 Storm Drain Line | | | | \$ 88,110.00 |
| SD 9A Storm Drain Line | | | | \$ 67,740.00 |
| Pond No. 5 - Rear Campus | | | | \$ 1,927,355.00 |
| Campus Ditch | | | | \$ 371,125.00 |
| Roadway Improvements - Arts Center to President's House | | | | \$ 124,720.00 |
| Roadway Improvements - Howard Hall | | | | \$ 35,855.00 |
| Roadway Improvements - Williams Hall | | | | \$ 105,100.00 |
| Roadway Improvements - Lawless Memorial Chapel | | | | \$ 41,710.00 |
| Mobilization | | | | \$ 249,110.00 |
| | | | | |
| | | | TOTAL | \$ 5,232,000.00 |

- 100% Design Plans and Specifications Completed
- Permitting/ Letters of No Objection Received
 - USACE
 - OLD
 - CPRA
- Other Deliverables Completed
 - Environmental Impact Assessment (EIA)
 - Benefit Cost Analysis (BCA)
 - Hydrologic and Hydraulic (H&H) Study

Task Name	Duration	Start	Finish
Phase II Approval Request Letter Submission	11 days	Wed 10/28/15	Wed 11/11/15
Phase II Construction	820 days	Wed 6/15/16	Tue 8/6/19
Phase II Approval Letter from GOHSEP	10 days	Wed 6/15/16	Tue 6/28/16
Bid Advertisement	20 days	Mon 7/4/16	Fri 7/29/16
Mandatory Pre-Bid Meeting	1 day	Mon 7/18/16	Mon 7/18/16
Bid Submission	0 days	Wed 8/3/16	Wed 8/3/16
Bid Evaluation and Selection	10 days	Thu 8/4/16	Wed 8/17/16
Notice to Award	1 day	Thu 8/18/16	Thu 8/18/16
Contract Negotiation	20 days	Fri 8/19/16	Thu 9/15/16
Contract Award	0 days	Thu 9/15/16	Thu 9/15/16
Pre-Con Meeting	1 day	Tue 9/20/16	Tue 9/20/16
Notice to Proceed	0 days	Tue 9/20/16	Tue 9/20/16
Mobilization	1 day	Wed 9/21/16	Wed 9/21/16
Construction Time	365 days	Wed 9/21/16	Tue 2/13/18
Substantial Completion	0 days	Tue 2/13/18	Tue 2/13/18
Punch List	10 days	Wed 2/14/18	Tue 2/27/18
Final Acceptance	20 days	Wed 2/14/18	Tue 3/13/18
Warranty Period	365 days	Wed 3/14/18	Tue 8/6/19



DILLARD

UNIVERSITY

Questions

Mark Scally, PE
Chester Engineers, Inc.
504-584-5583

mscally@chesterengineers.com

Adonis Woods, CCM
Dillard University
504-816-4375

awoods@dillard.edu

Crystal Maiden
Vanir Construction Management
504-377-2075

Crystal.Maiden@vanir.com