



# *Lakeview Green Infrastructure*

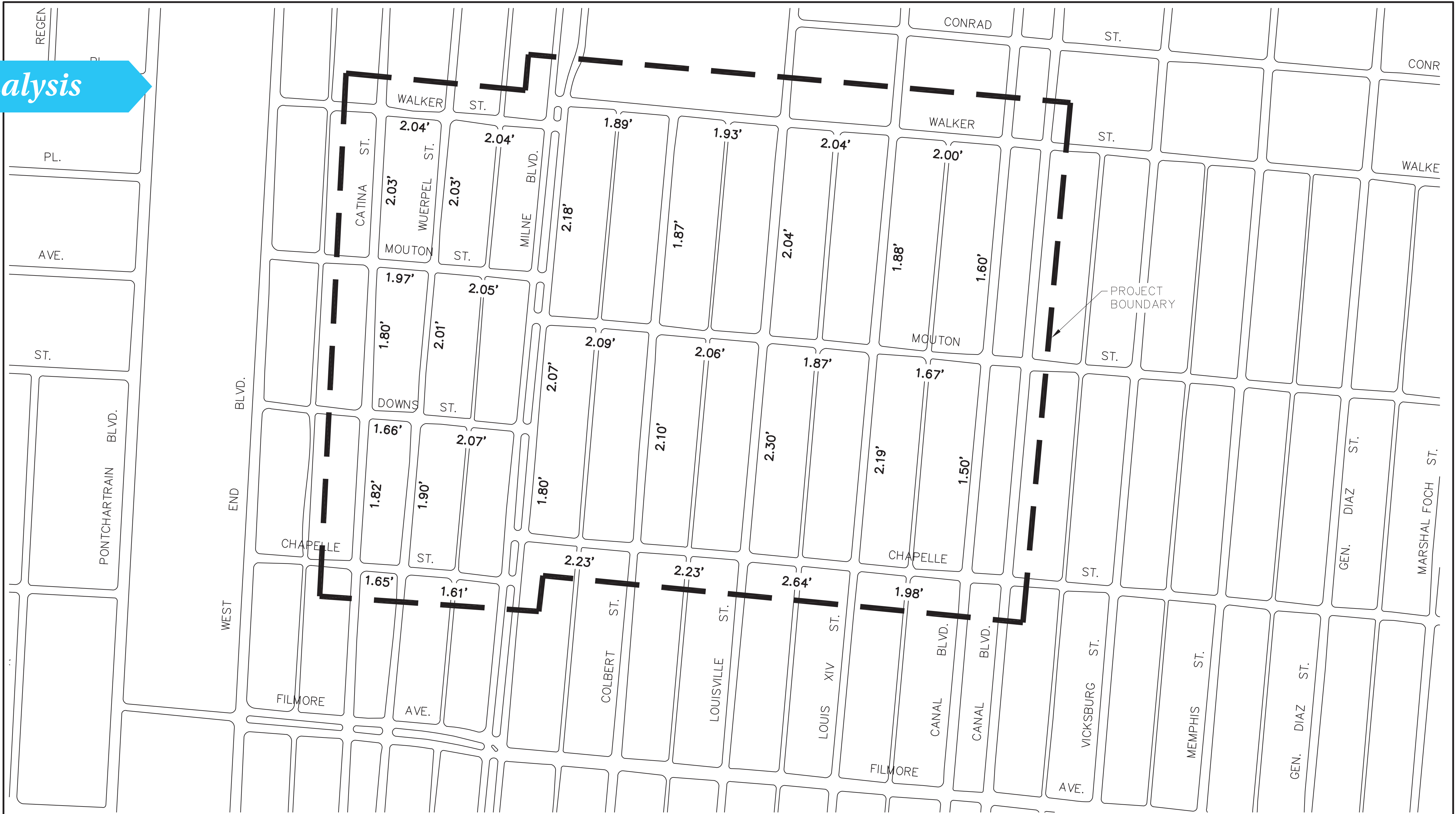
NEW ORLEANS, LA



*project area*



*analysis*



APPROXIMATE FLOODING DEPTHS FOR A  
10-YEAR, 24-HOUR RAIN EVENT  
EXISTING CONDITIONS

FLOODING REDUCTION IN LAKEVIEW  
NEW ORLEANS, LA



*analysis*

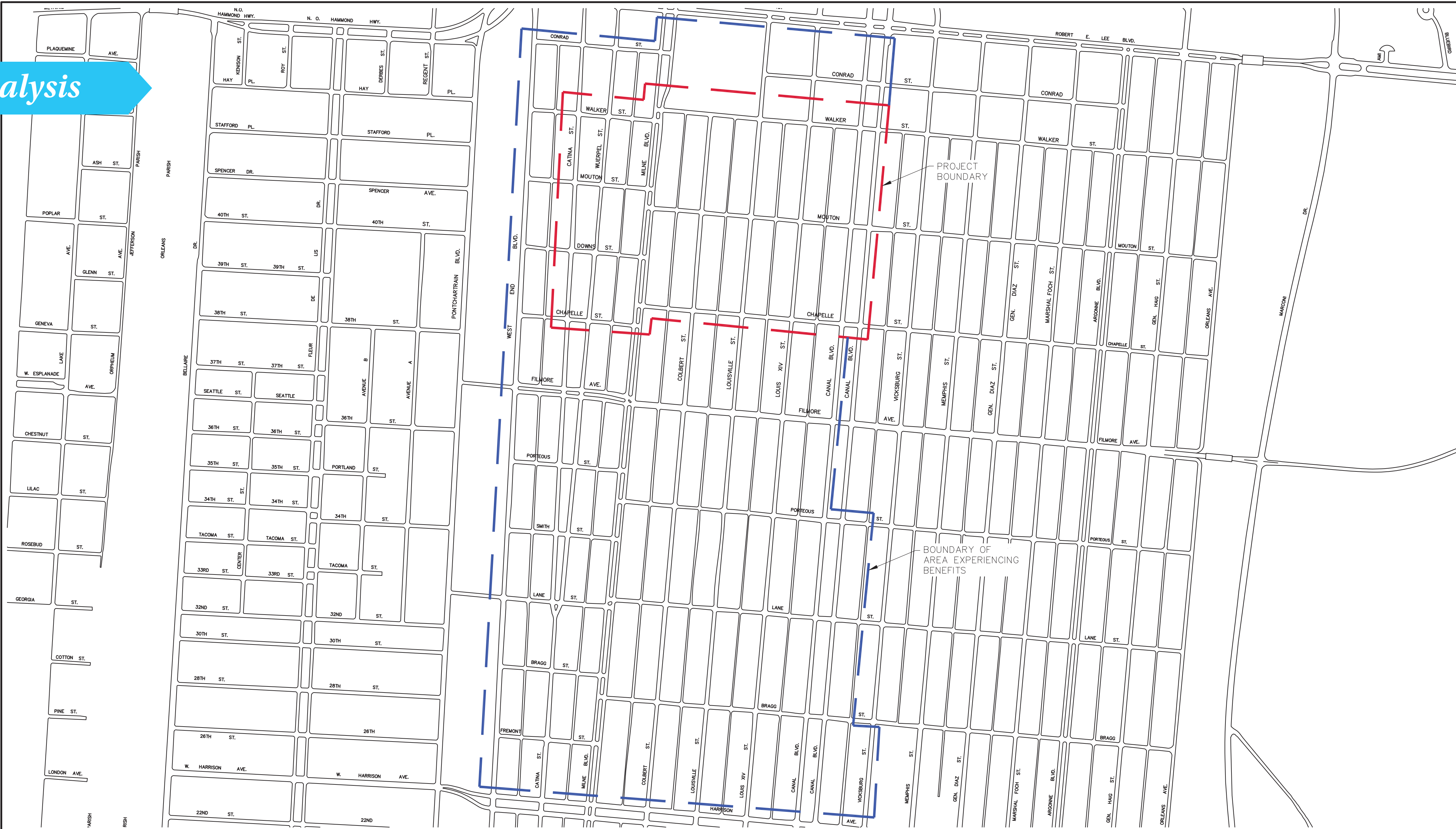


APPROXIMATE FLOODING DEPTHS FOR A  
10-YEAR, 24-HOUR RAIN EVENT  
PROPOSED CONDITIONS

FLOODING REDUCTION IN LAKEVIEW  
NEW ORLEANS, LA



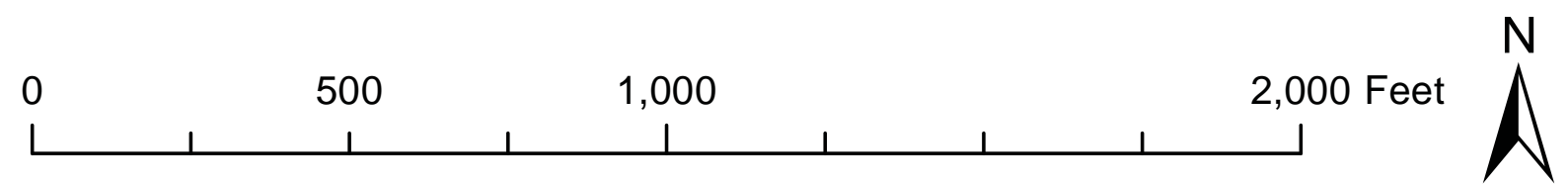
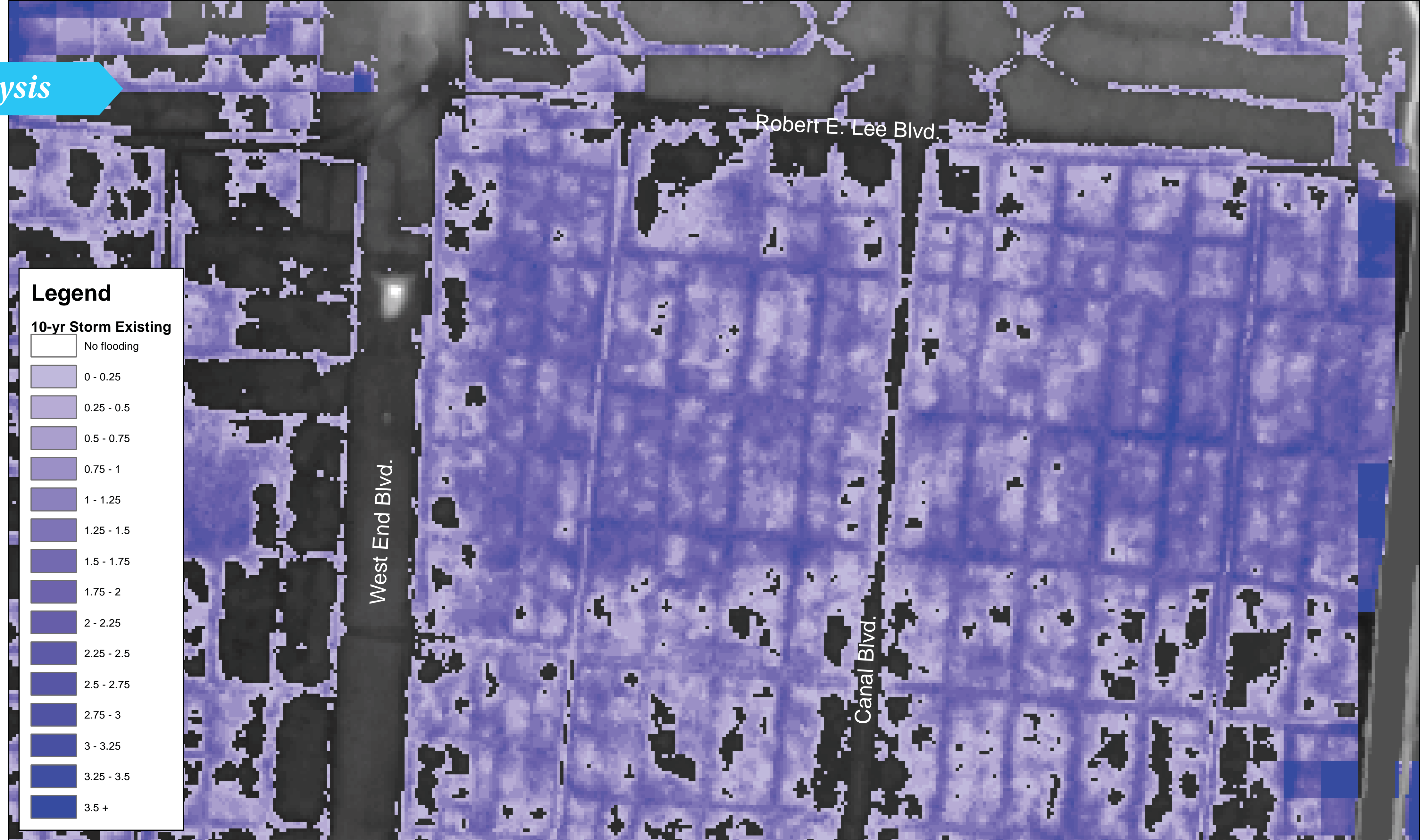
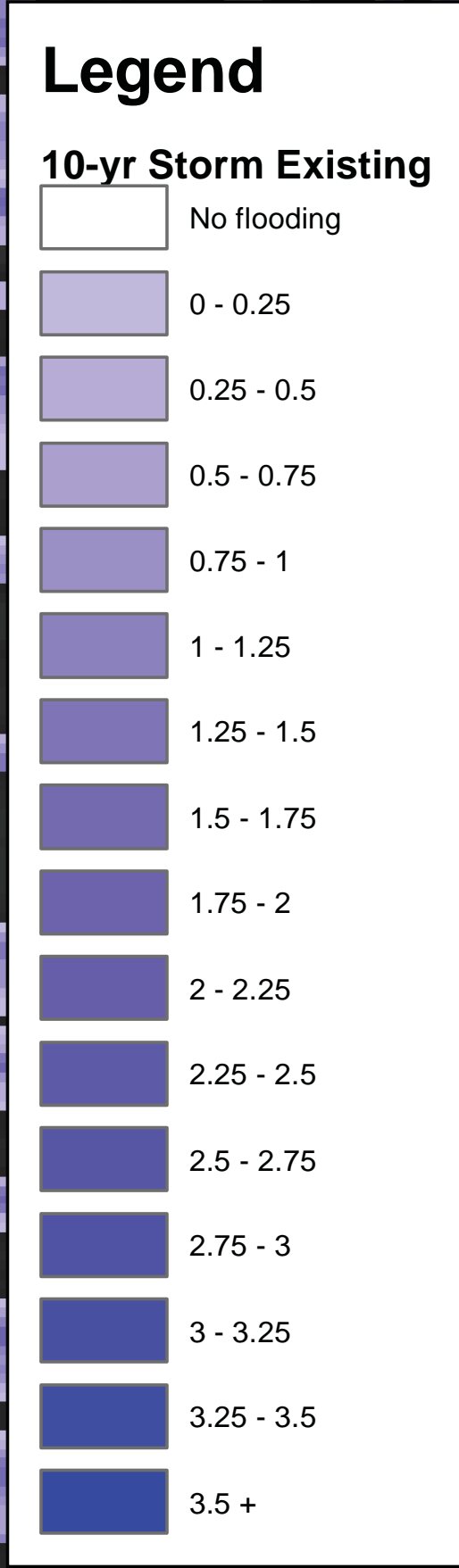
analysis



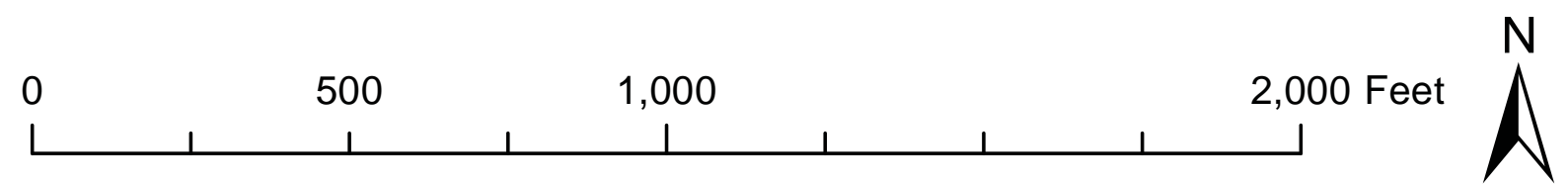
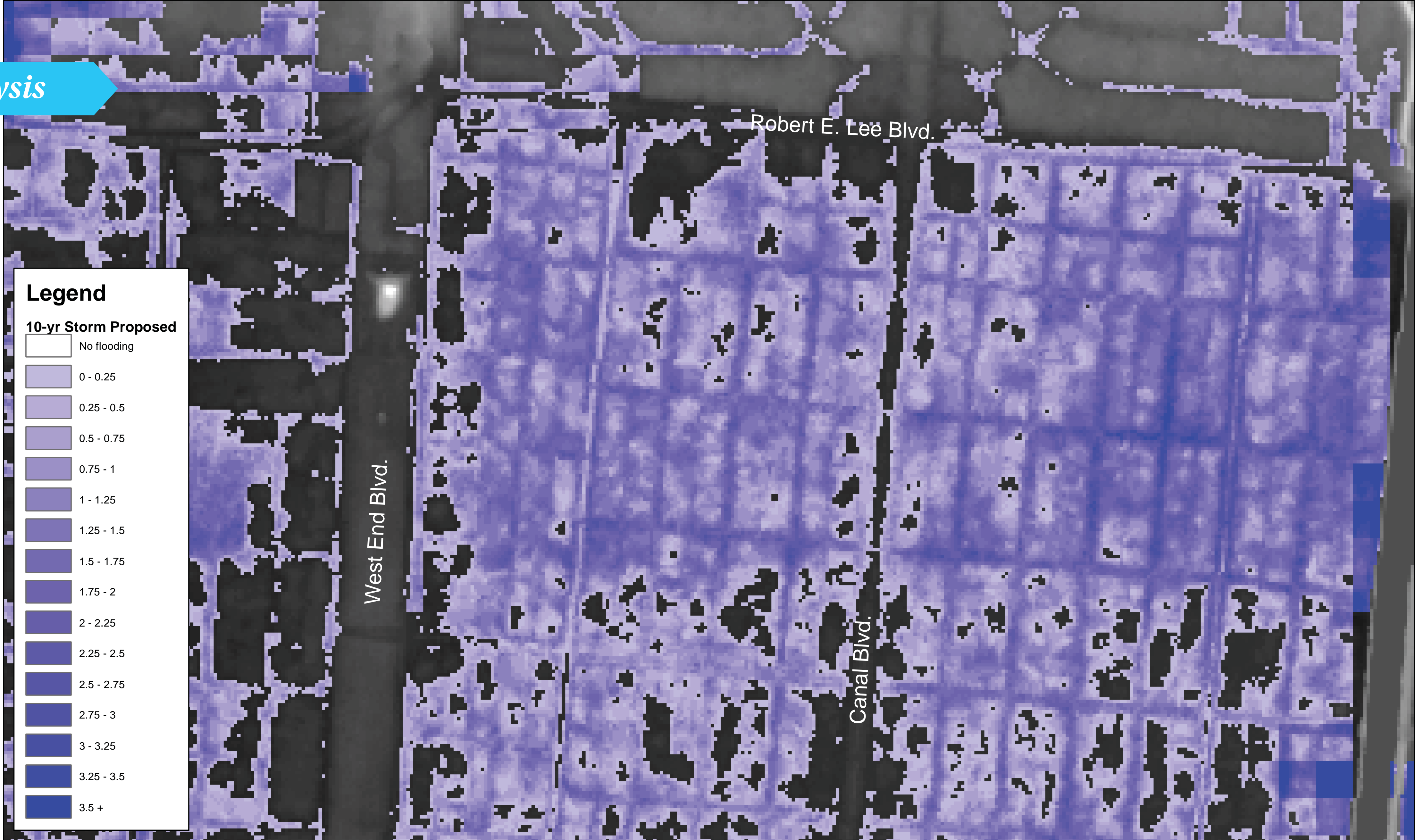
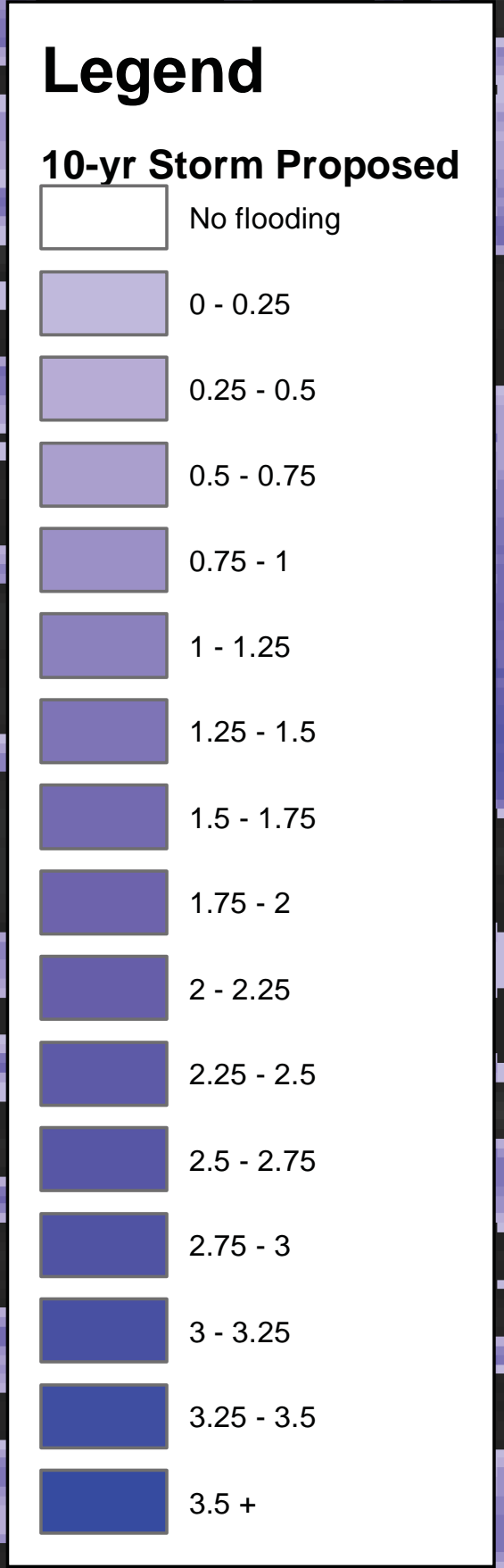
SWMM MODEL RESULTS  
AREA OF BENEFITS

FLOODING REDUCTION IN LAKEVIEW  
NEW ORLEANS, LA











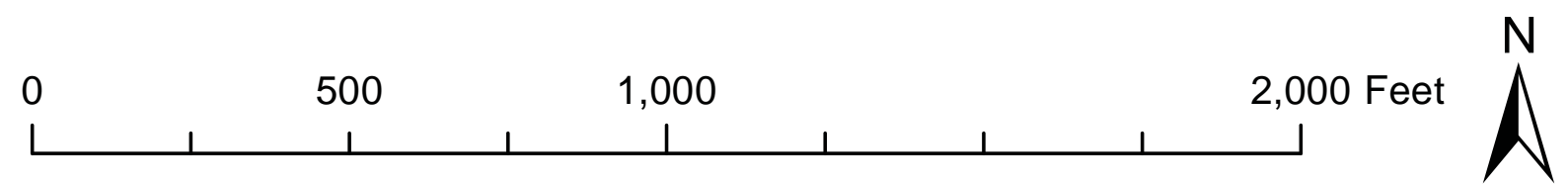
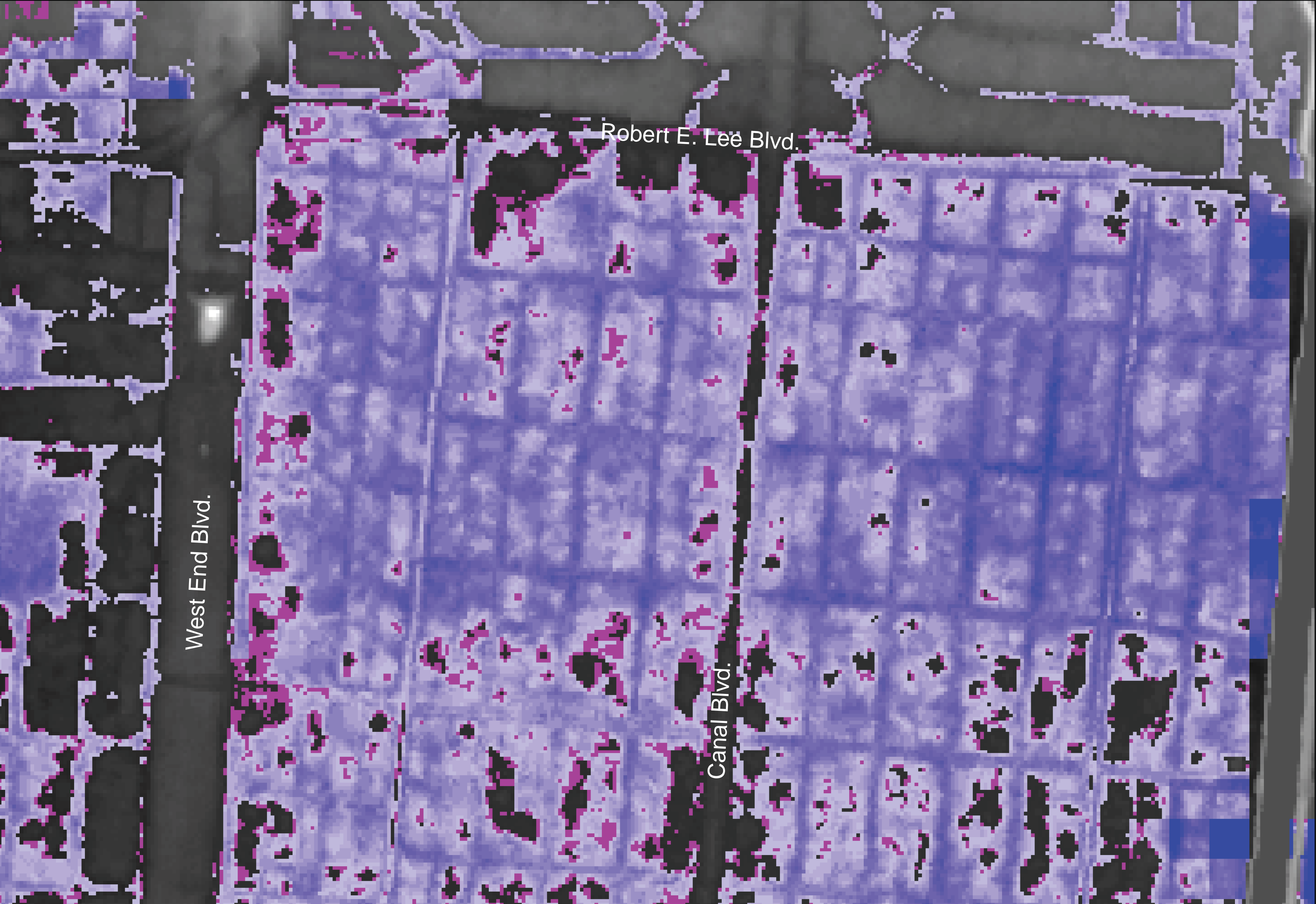
**Legend**

**10-yr Storm Proposed**

White	No flooding
Lightest Blue	0 - 0.25
Light Blue	0.25 - 0.5
Medium-Light Blue	0.5 - 0.75
Medium Blue	0.75 - 1
Dark-Medium Blue	1 - 1.25
Dark Blue	1.25 - 1.5
Very Dark Blue	1.5 - 1.75
Dark Purple	1.75 - 2
Medium Purple	2 - 2.25
Light Purple	2.25 - 2.5
Very Light Purple	2.5 - 2.75
Lightest Purple	2.75 - 3
Very Lightest Purple	3 - 3.25
Lightestest Purple	3.25 - 3.5
White	3.5 +

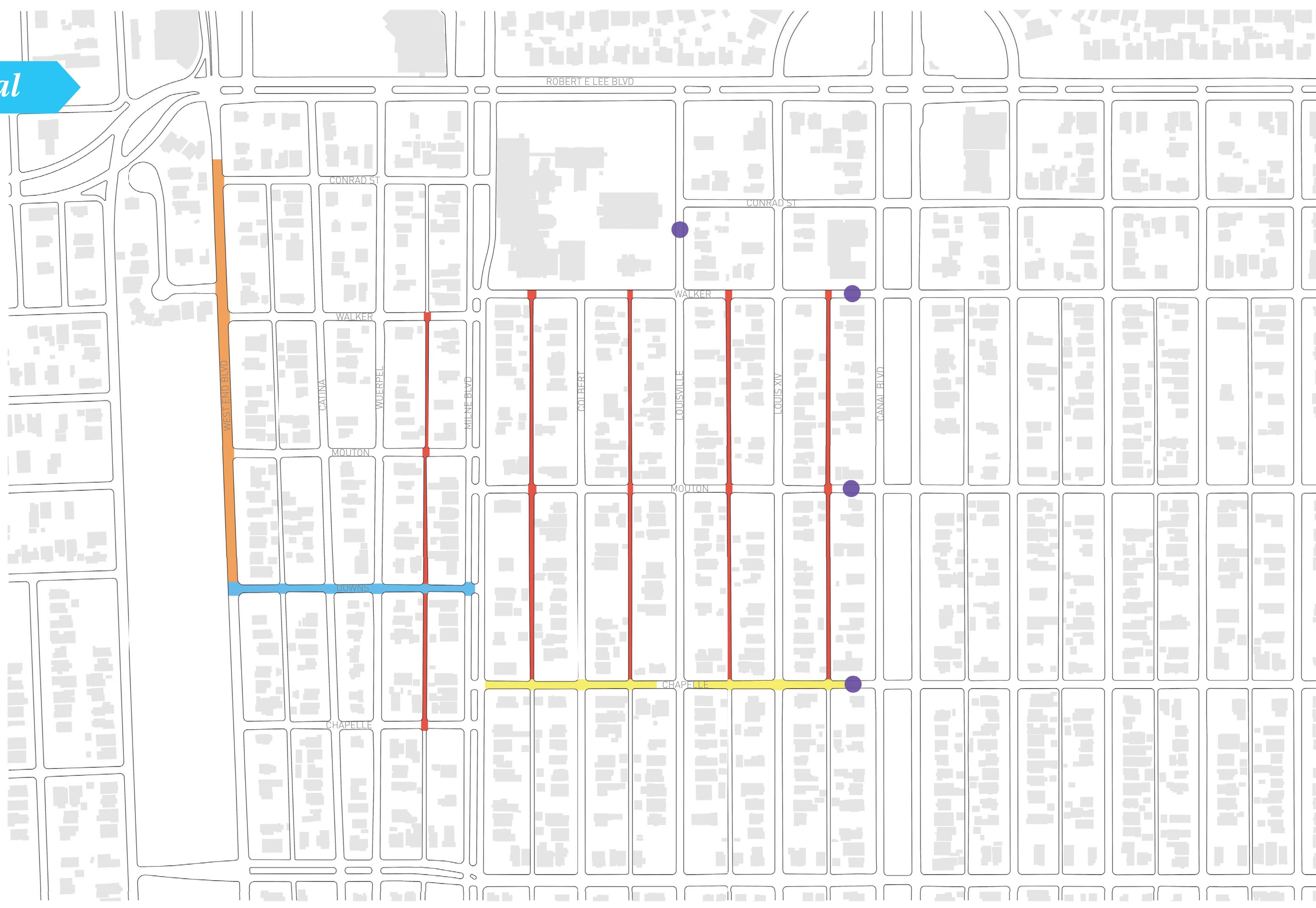
**10-yr Storm Existing**

White	Not Flooded
Red	Flooded

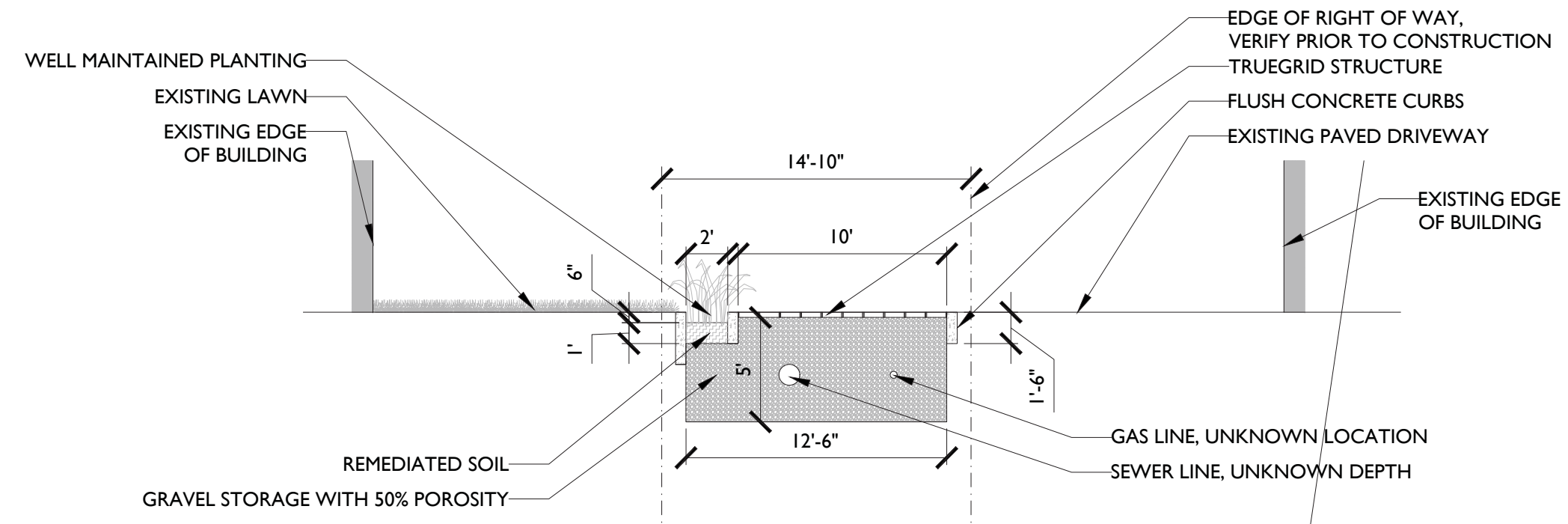




*proposal*







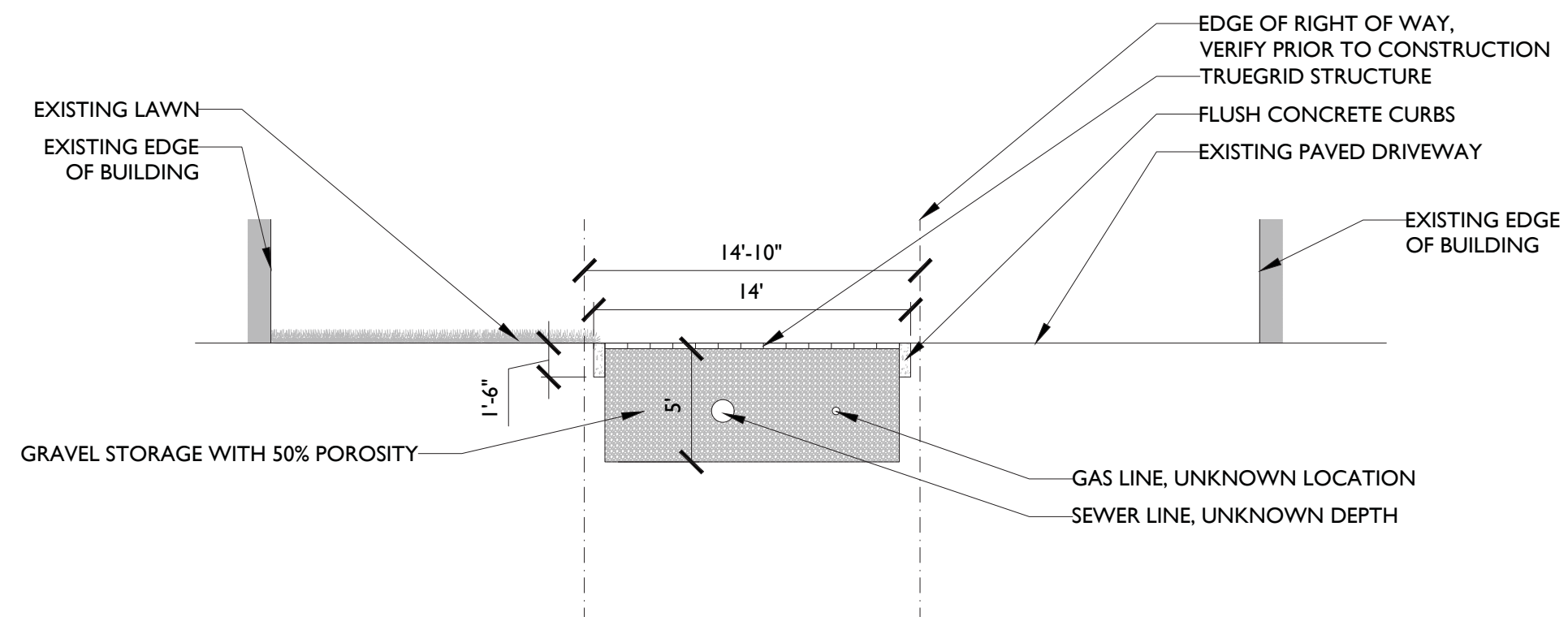
**SECTION ACROSS ALLEYWAY, SCENARIO 2:  
GRAVEL STORAGE & RAIN GARDENS**

1/4" = 1'-0"



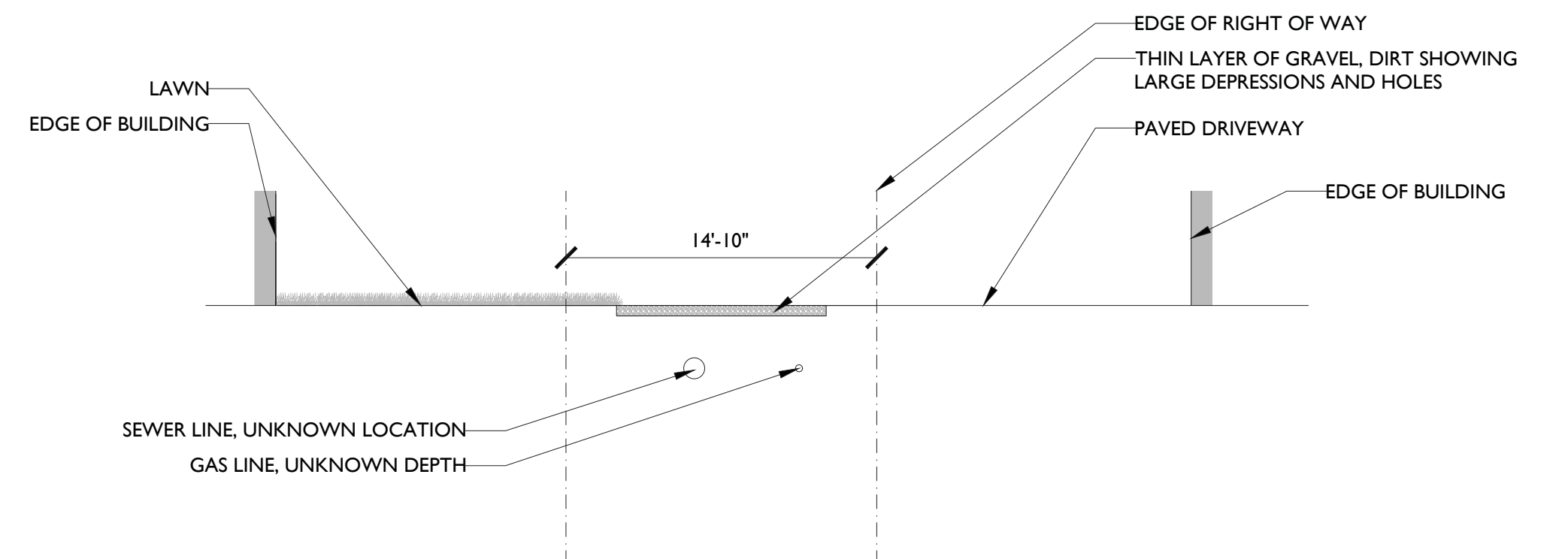
**ALLEYWAY, EXISTING CONDITIONS**

NTS



**SECTION ACROSS ALLEYWAY, SCENARIO 1: GRAVEL STORAGE**

1/4" = 1'-0"



**SECTION ACROSS ALLEYWAY, EXISTING CONDITIONS**

1/4" = 1'-0"



*public alley*

proposed



EXISTING YARD

RAIN GARDENS WITH REMEDIATED SOIL

GRAVEL DRIVE WITH TRUEGRID STRUCTURE

FLUSH CONCRETE CURBS

EXISTING DRIVE

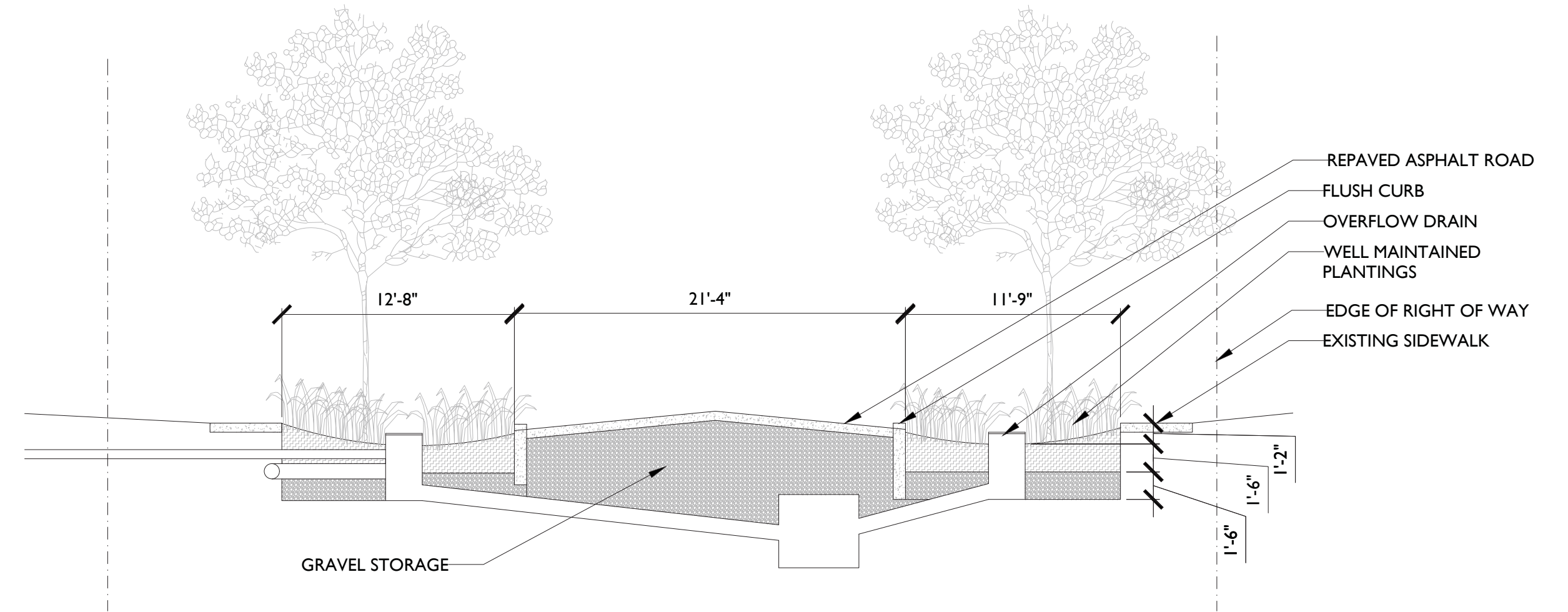
14'

EXISTING EDGE OF BUILDING

EXISTING EDGE OF GARAGE

GRAVEL STORAGE WITH 40% POROSITY





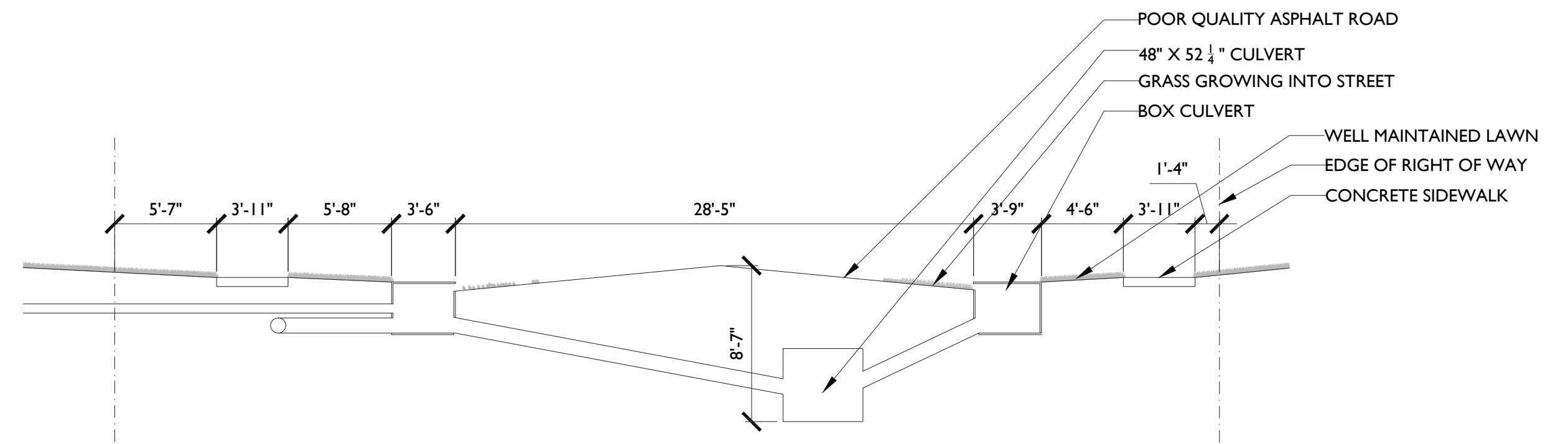
SECTION ACROSS PROPOSED STREET IMPROVEMENTS  
GRAVEL STORAGE & RAIN GARDEN

3/16" = 1'-0"



STREET, EXISTING CONDITIONS

NTS

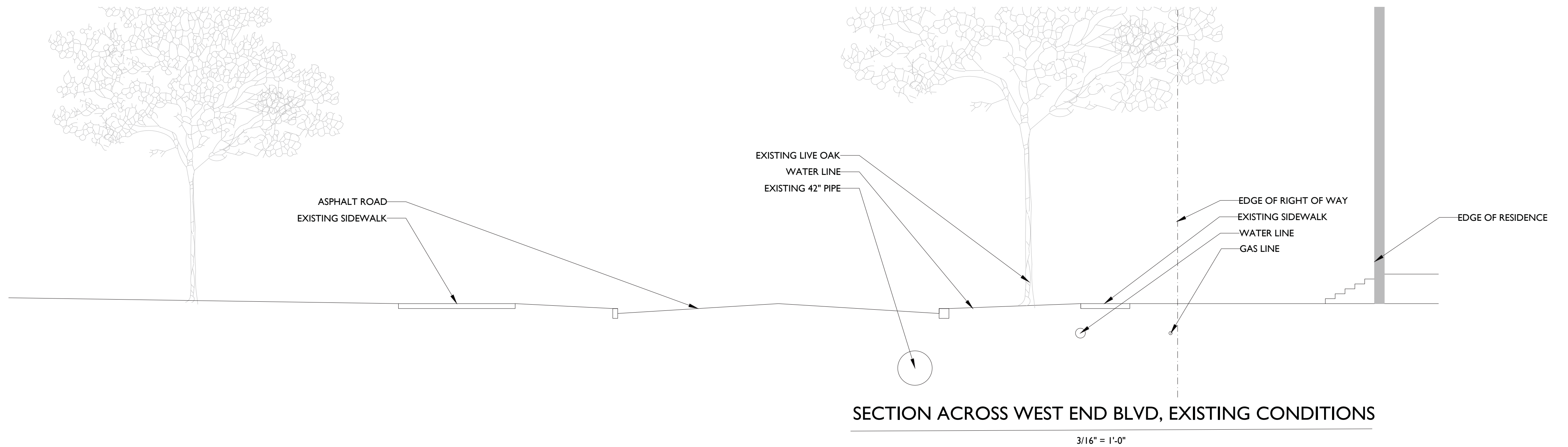
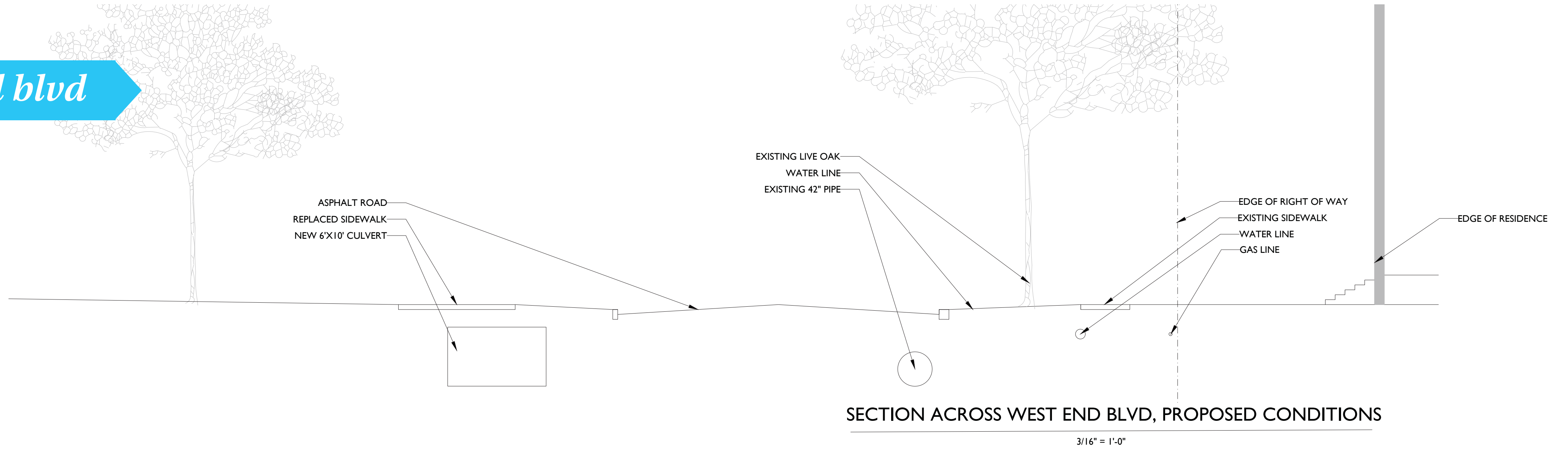


SECTION ACROSS STREET, EXISTING CONDITIONS

3/16" = 1'-0"

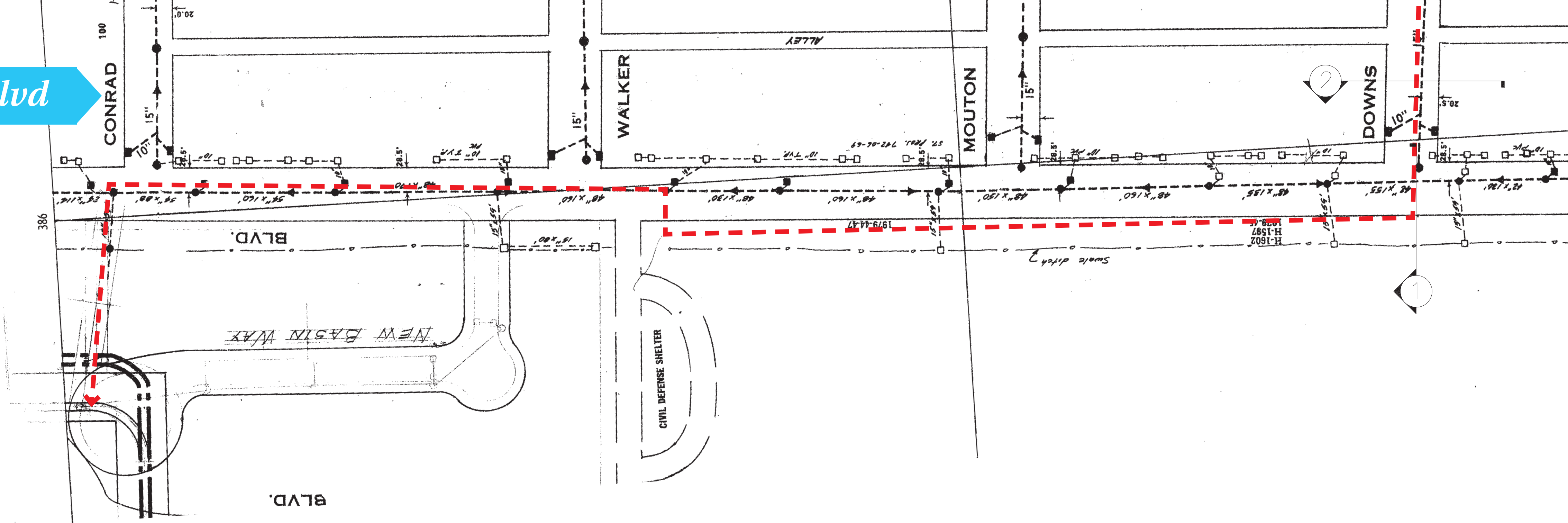


*west end blvd*

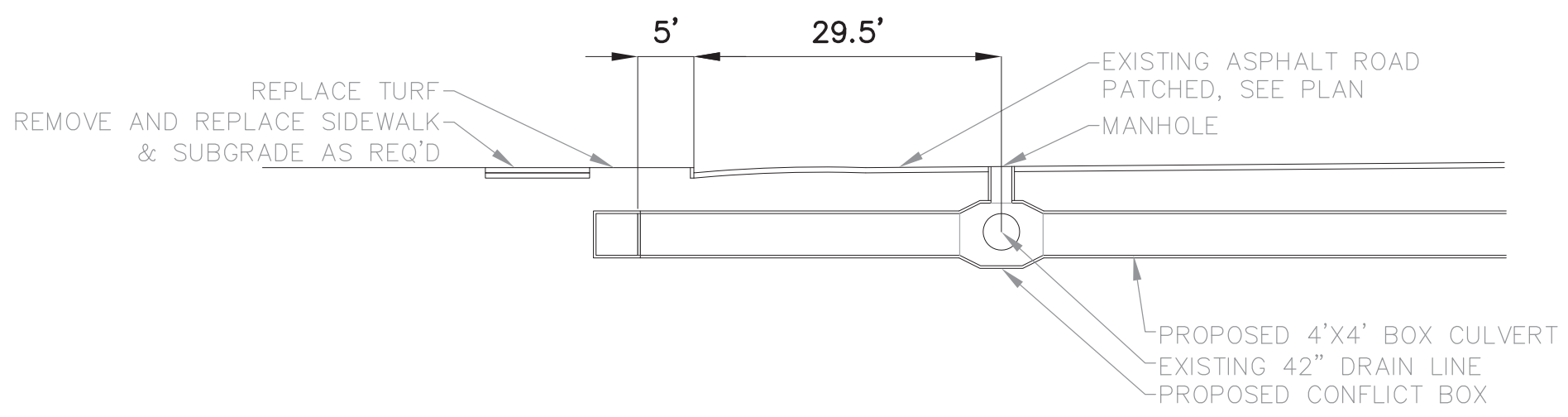




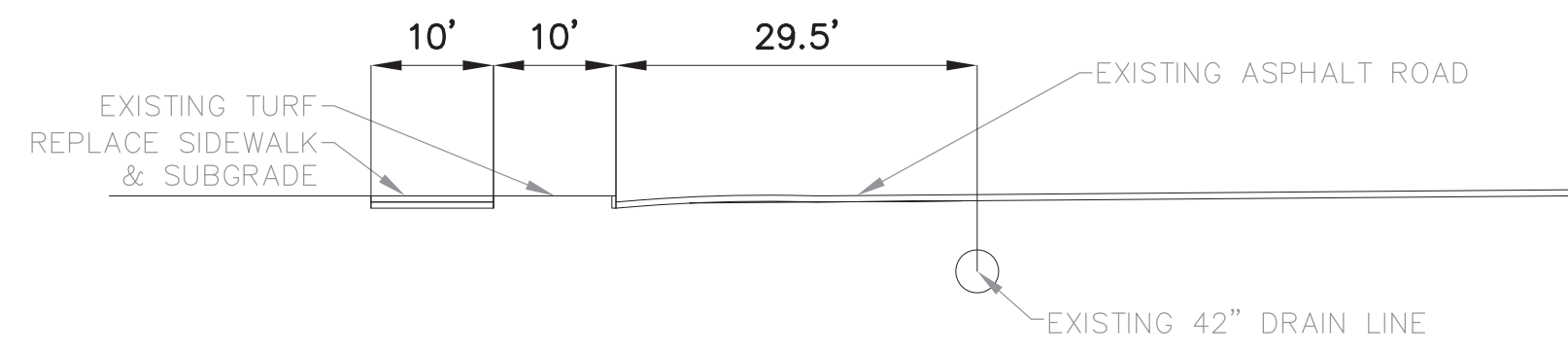
west end blvd



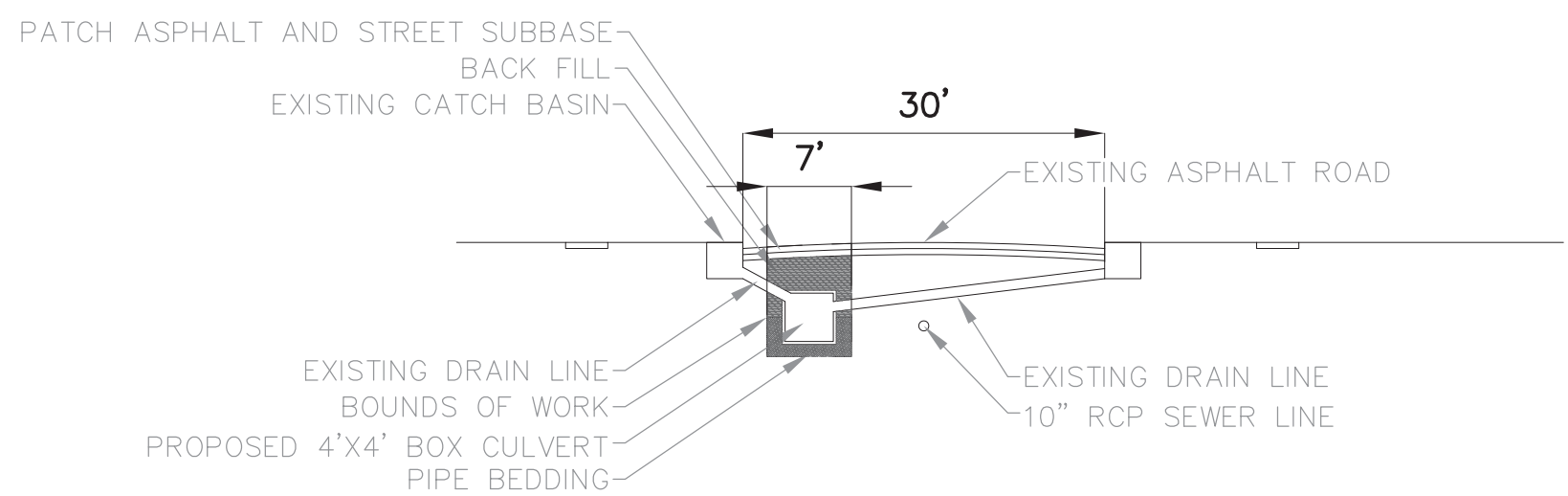
SECTION 1  
WEST END BLVD & DOWNS STREET INTERSECTION  
FACING NORTH. PROPOSED CONDITIONS



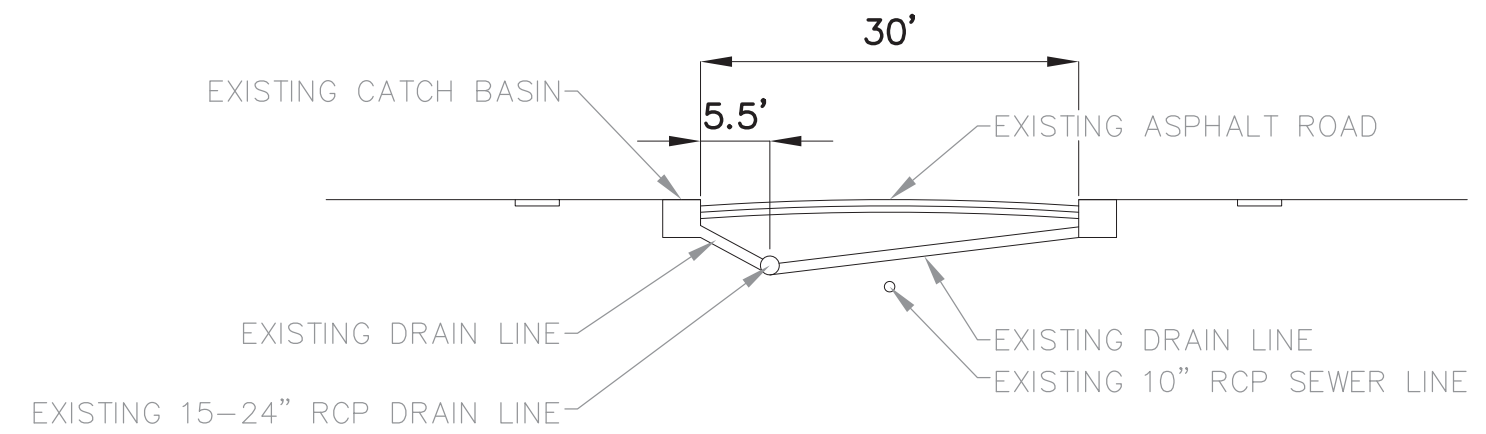
WEST END BLVD & DOWNS STREET INTERSECTION  
FACING NORTH. EXISTING CONDITIONS



SECTION 2  
DOWNS STREET  
FACING WEST. PROPOSED CONDITIONS



DOWNS STREET  
FACING WEST. EXISTING CONDITIONS



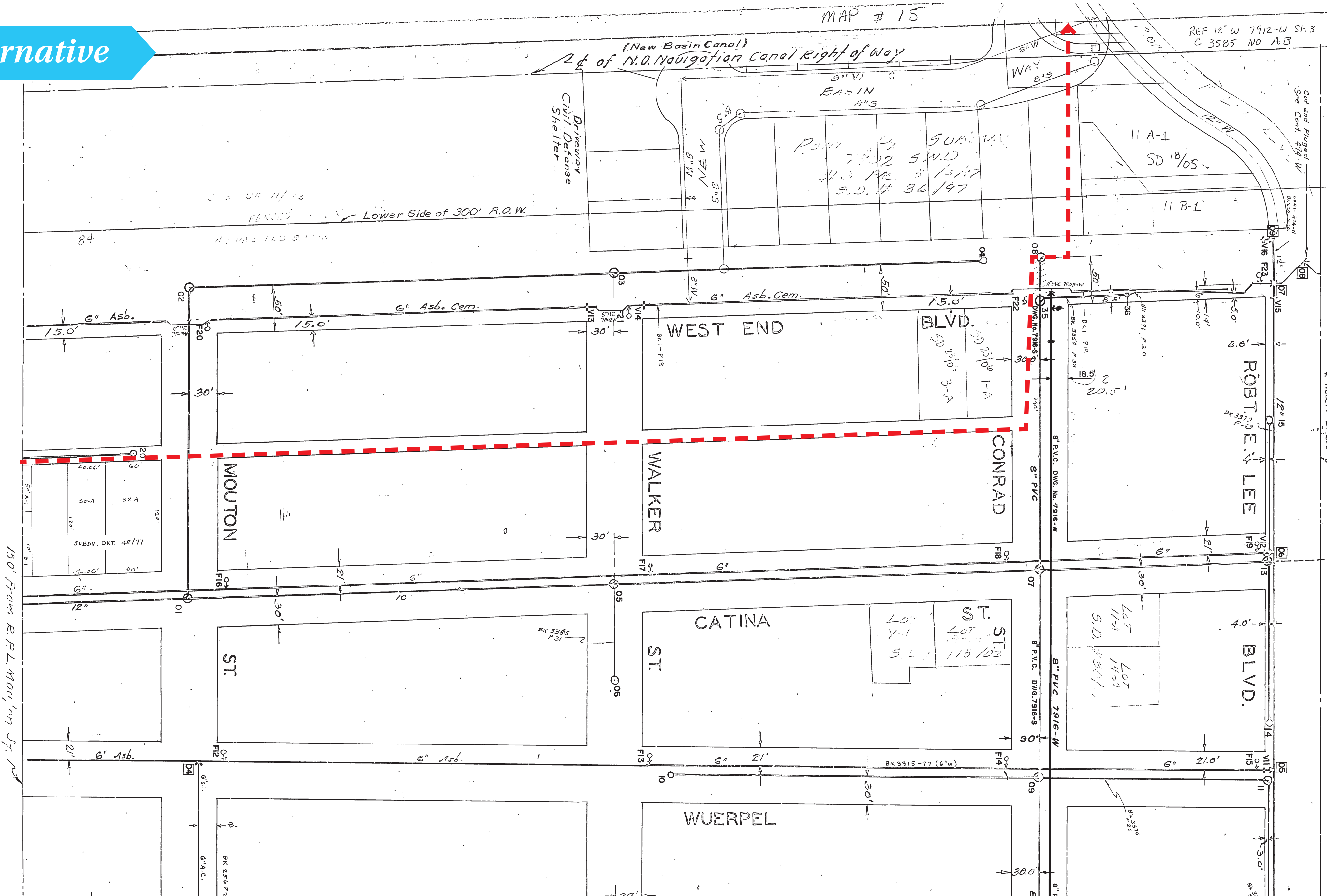


alternative

MAP # 15

REF 12" W 7912-W Sh 3  
C 3585 NO A B

(New Basin Canal)  
2 ft of N.O. Navigation Canal Right of Way



150' From R.P.L. Moulton St

Robert E. Lee Jr.

226